

GUY RICHARDS SMIT  
A MOUNTAIN OF SKULLS AND NOT ONE I RECOGNIZE



# GUY RICHARDS SMIT

## A MOUNTAIN OF SKULLS AND NOT ONE I RECOGNIZE

Charlie James Gallery is delighted to present New York-based artist Guy Richards Smit in his first solo show with the gallery. A Mountain of Skulls and Not One I Recognize presents an exhaustive, dizzying collection of watercolor and gouache paintings from the last year.

The ambitious A Mountain of Skulls... is an oddly affecting meditation on mortality, history and unbelievable human suffering. A village's worth of the dead, dumped in a mass grave with their personalities, traits, desires and dramas intact. A lumbering death march of wise cracking memento moris demanding their humanity be acknowledged. Also, in the exhibition, works from Smit's "NY Times" Front Page series, as well as "NY Times, Friday, September 13, 2013," an enormous multipage watercolor, ranging from hard news, art reviews, market reports, lifestyle ruminations and sports, which art critic Roberta Smith described as "an a tour de force that showcases his considerable talents for satire, stand-up, endurance art and painting".

Born and raised in New York City, Guy Richards Smit is a video artist, performer, musician and painter who's work has been seen at biennials in Havana, Valencia, at ARCOMadrid and Dublin Contemporary in 2011 as well as at the Museum of Modern Art in New York and The Hirshhorn Museum In Washington DC. He was recently included in the exhibition "Stand Up" at The Pompidou Center, Paris. Solo exhibitions include the Grossmalerman! Show at Pierogi Gallery, New York, USA 2015; Schroeder, Romero and Shredder, 2011, Fred [London] Ltd., London, UK 2009; Nausea 2, Premier Series, Museum of Modern Art, New York, USA 2004; QED, Los Angeles, CA in 2006. He has received awards including the Penny McCall Foundation Award in 2004. He recently completed a 5 episode sitcom called The Grossmalerman Show with the legendary director Joshua White (Max Headroom, Seinfeld etc).

GUY RICHARDS SMIT  
A MOUNTAIN OF SKULLS AND NOT ONE I RECOGNIZE



GUY RICHARDS SMIT  
A MOUNTAIN OF SKULLS AND NOT ONE I RECOGNIZE

*Left*  
New York Times,  
January 26, 2016  
Watercolor and  
gouache on paper  
38 x 23 inches  
Framed:  
41 x 26 inches  
2016



*Right*  
New York Times,  
January 29, 2016  
Watercolor and  
gouache on paper  
38 x 23 inches  
Framed:  
41 x 26 inches  
2016



GUY RICHARDS SMIT  
A MOUNTAIN OF SKULLS AND NOT ONE I RECOGNIZE

*Left*

New York Times,  
January 10, 2016  
Watercolor and  
gouache on paper  
38 x 23 inches  
Framed:  
41 x 26 inches  
2016



*Right*

New York Times,  
January 28, 2016  
Watercolor and  
gouache on paper  
38 x 23 inches  
Framed:  
41 x 26 inches  
2016



GUY RICHARDS SMIT  
A MOUNTAIN OF SKULLS AND NOT ONE I RECOGNIZE

*Left*  
New York Times,  
January 19, 2016  
Watercolor and  
gouache on paper  
38 x 23 inches  
Framed:  
41 x 26 inches  
2016



*Right*  
New York Times,  
October 27, 2015  
Watercolor and  
gouache on paper  
38 x 23 inches  
Framed:  
42 x 26.5 inches  
2015

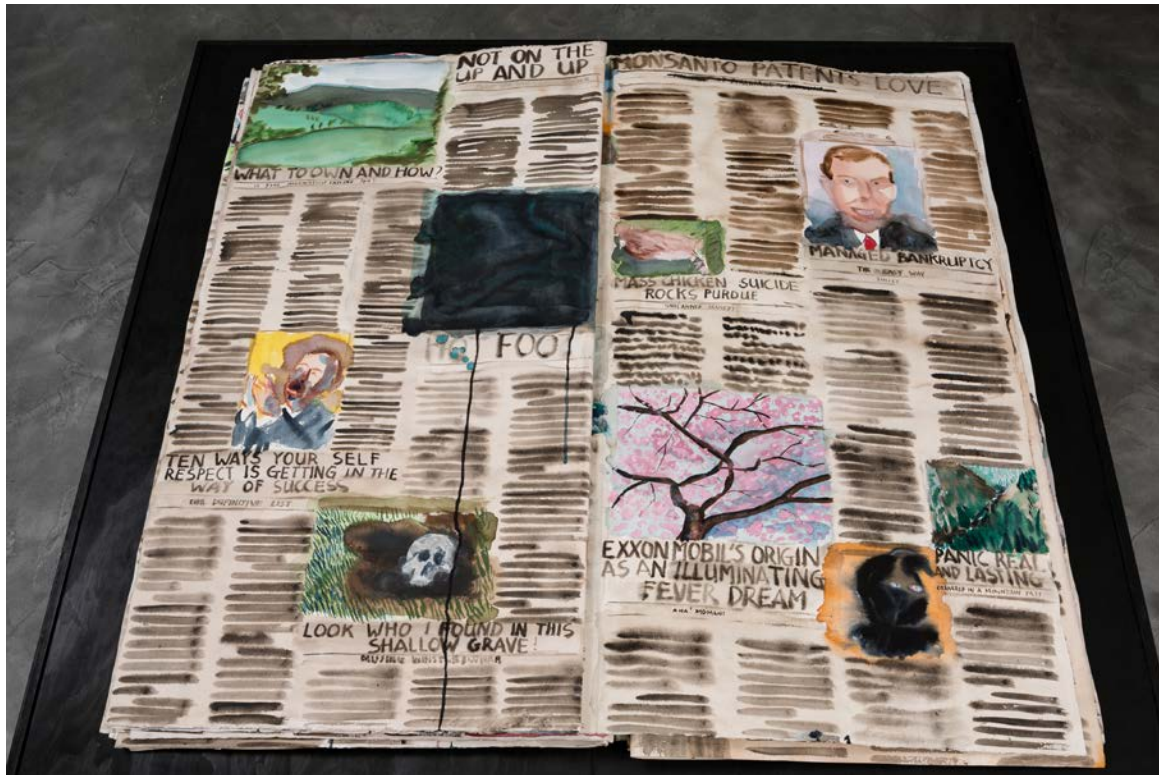


GUY RICHARDS SMIT  
A MOUNTAIN OF SKULLS AND NOT ONE I RECOGNIZE

New York Times,  
October 24, 2015  
Watercolor and  
gouache on paper  
38 x 23 inches  
Framed:  
42 x 26.5 inches  
2015



GUY RICHARDS SMIT  
A MOUNTAIN OF SKULLS AND NOT ONE I RECOGNIZE

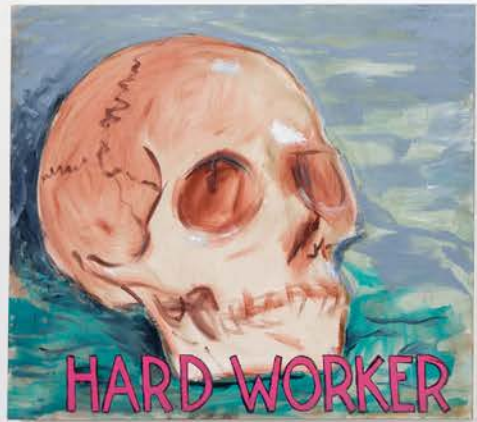


*New York Times, September 13, 2013*  
Watercolor and gouache on paper  
46 x 49 inches  
Table: 52 x 56 x 30 inches  
2016

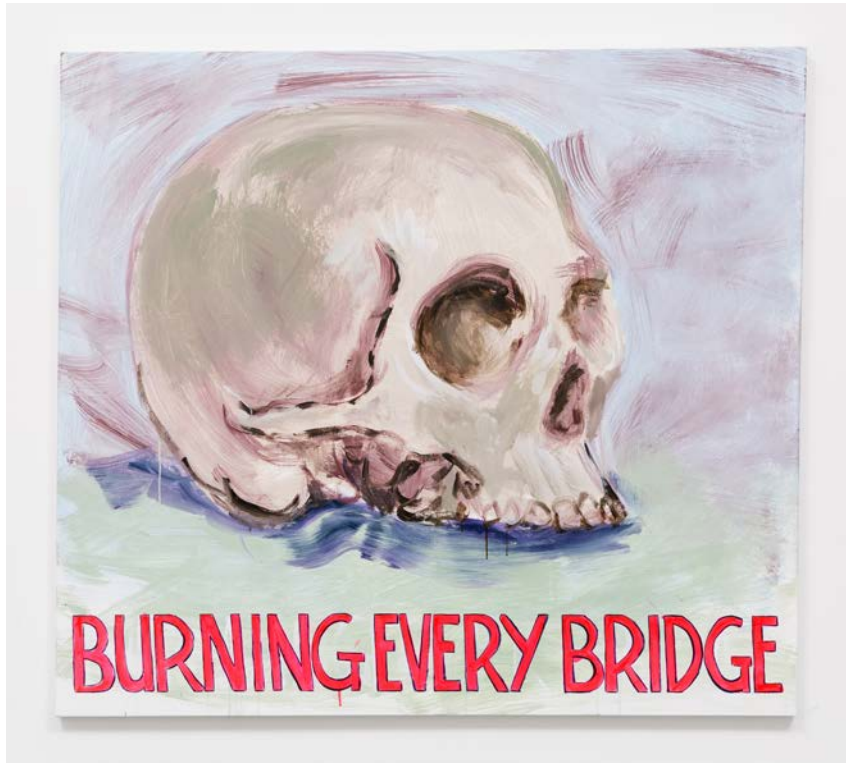




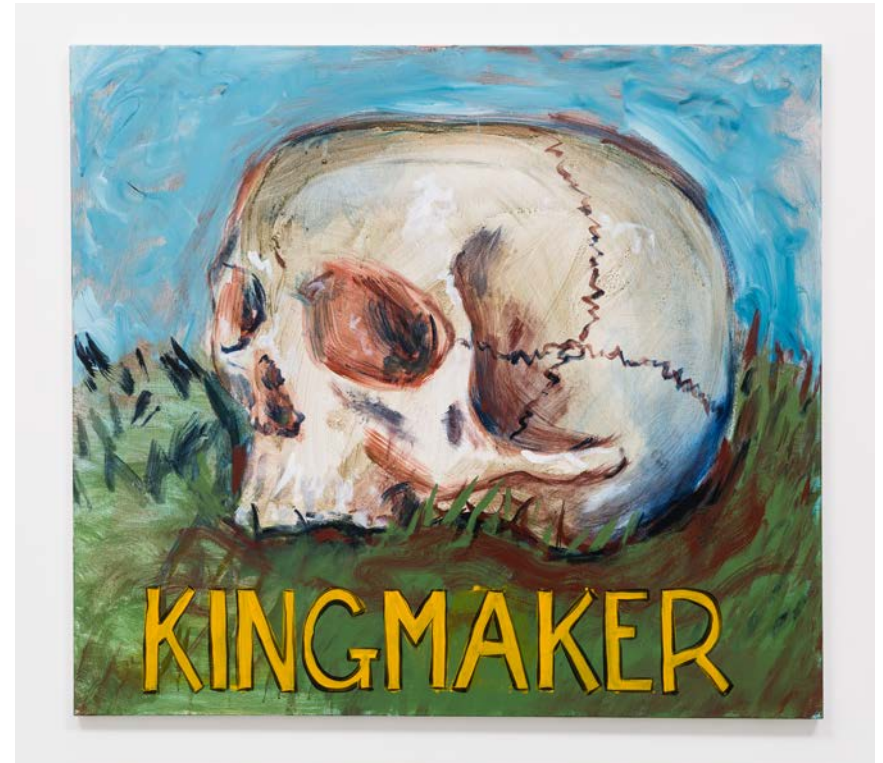
GUY RICHARDS SMIT  
A MOUNTAIN OF SKULLS AND NOT ONE I RECOGNIZE



GUY RICHARDS SMIT  
A MOUNTAIN OF SKULLS AND NOT ONE I RECOGNIZE

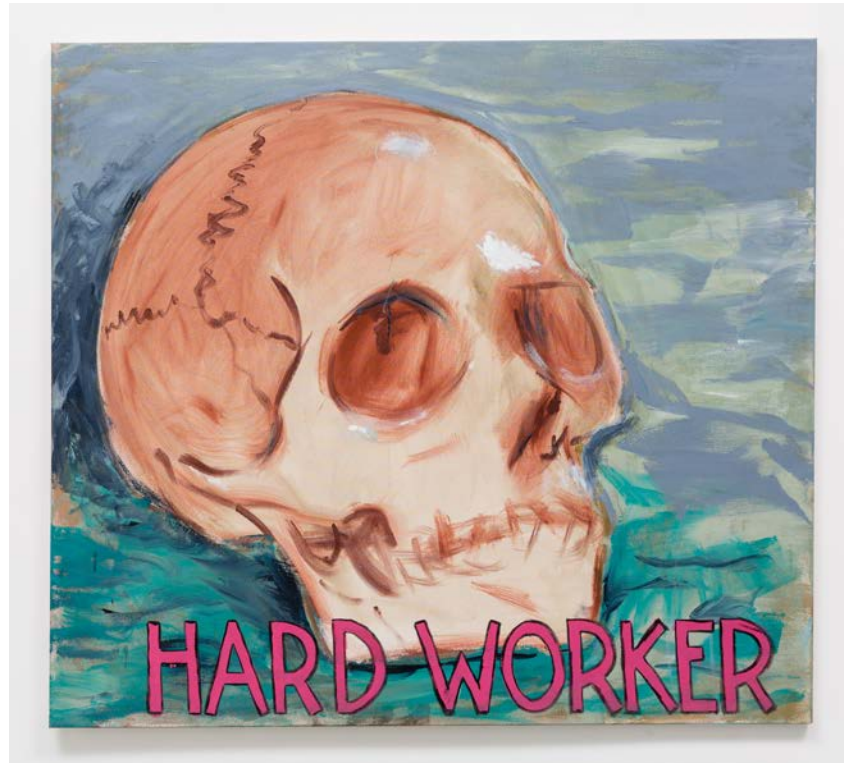


*Burning Every Bridge*  
Acrylic on canvas  
52 x 58 inches  
2016



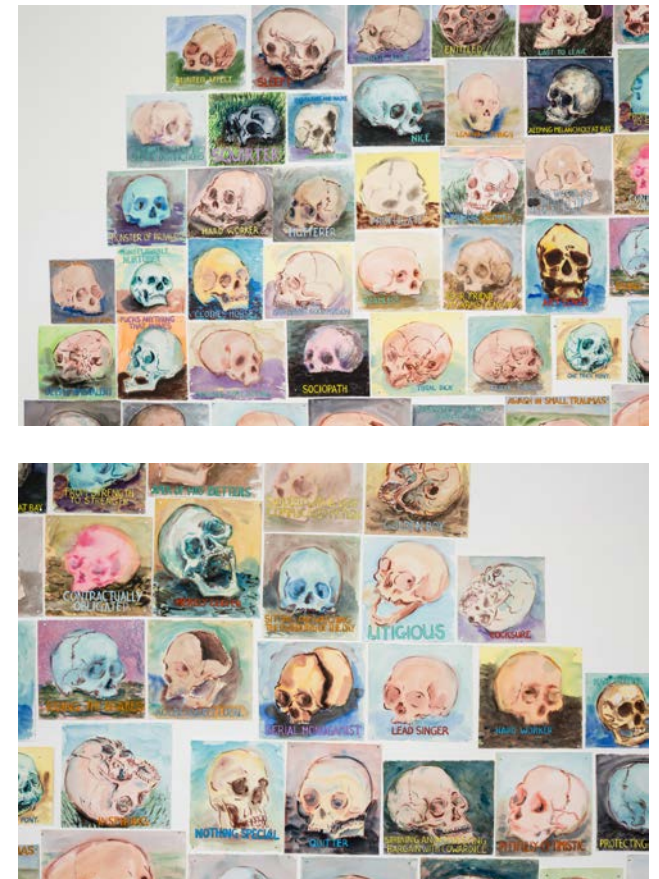
*Kingmaker*  
Acrylic on canvas  
52 x 58 inches  
2016

GUY RICHARDS SMIT  
A MOUNTAIN OF SKULLS AND NOT ONE I RECOGNIZE



*Hard Worker*  
Acrylic on canvas  
52 x 58 inches  
2016

GUY RICHARDS SMIT  
A MOUNTAIN OF SKULLS AND NOT ONE I RECOGNIZE

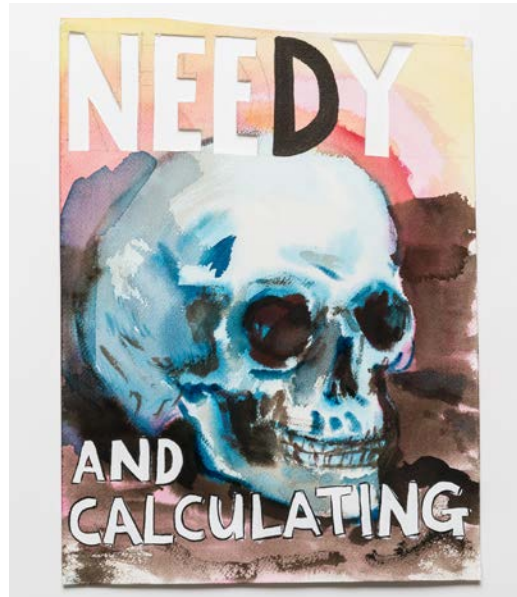


GUY RICHARDS SMIT  
A MOUNTAIN OF SKULLS AND NOT ONE I RECOGNIZE

Small Skulls



Playful  
watercolor, gouache and ink on  
paper  
11 x 11.75 inches  
2015



Needy and  
Calculating  
watercolor, gouache and ink on  
paper  
14 x 10.5 inches  
2015

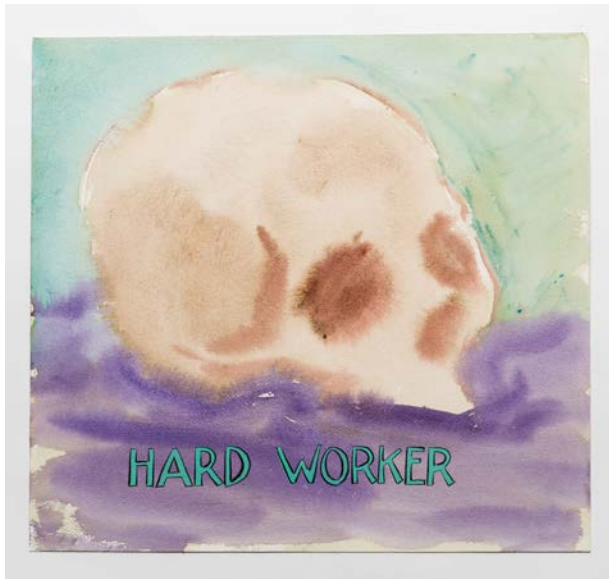


Dull But Kind  
watercolor, gouache and ink on paper  
12.75 x 14 inches  
2015

GUY RICHARDS SMIT  
A MOUNTAIN OF SKULLS AND NOT ONE I RECOGNIZE

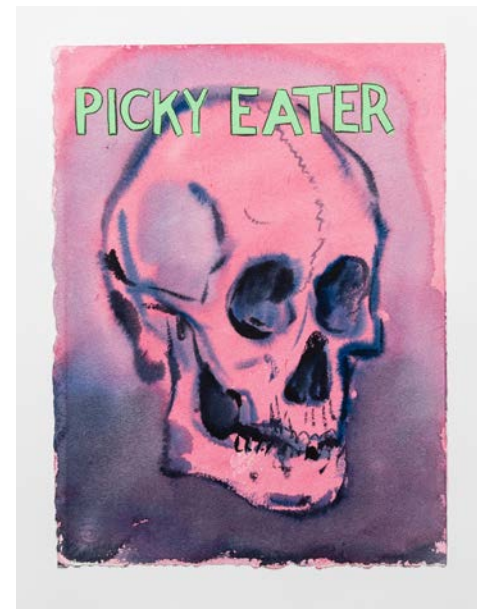
Small Skulls

Hard Worker  
watercolor,  
gouache and ink  
on paper,  
11.75 x 12.25  
inches  
2015



Totally Out of  
Control  
watercolor,  
gouache and ink  
on paper,  
13.5 x 14  
inches  
2015

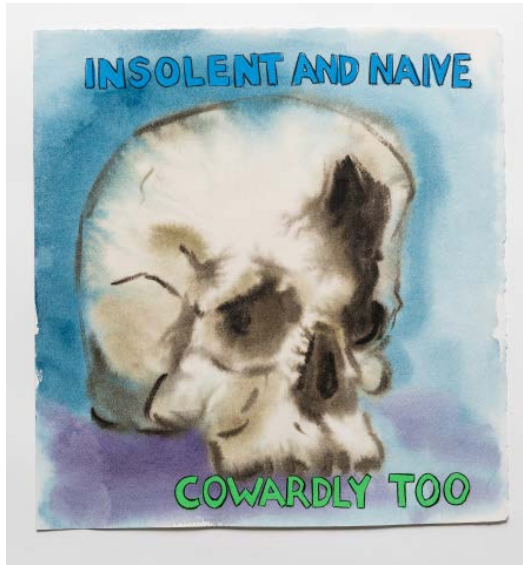
Unavailable  
watercolor,  
gouache and ink  
on paper,  
12.75 x 14.25  
inches  
2015



Picky Eater  
watercolor,  
gouache and ink  
on paper,  
14.75 x 11  
inches  
2015

GUY RICHARDS SMIT  
A MOUNTAIN OF SKULLS AND NOT ONE I RECOGNIZE

Small Skulls



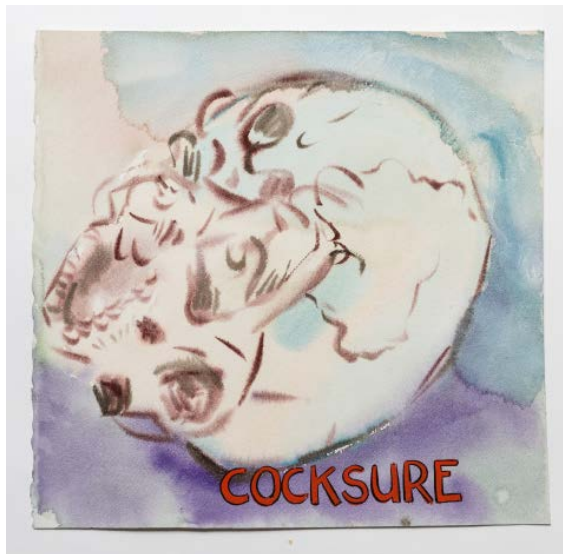
Insolent and Naive, watercolor, gouache and ink on paper, 13.25 x 12.5 inches, 2015



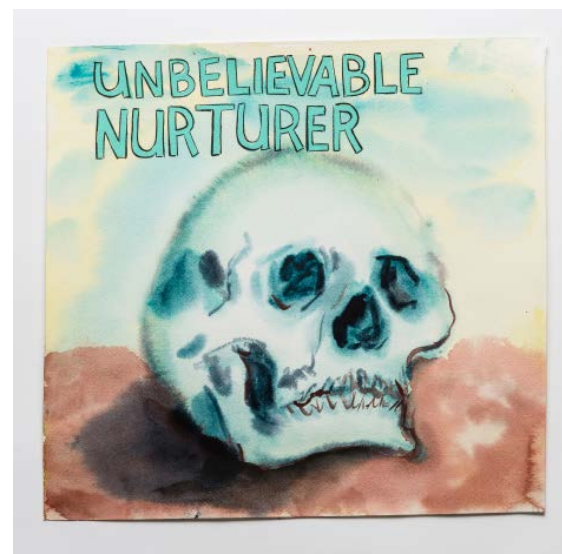
Means Well Despite Everything, watercolor, gouache and ink on paper, 13 x 13.5 inches, 2015



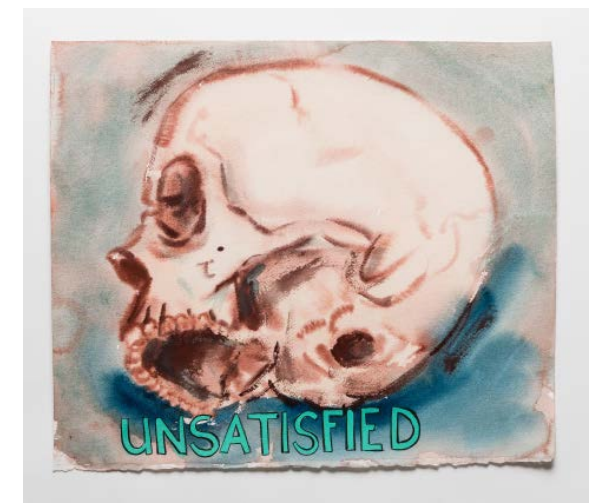
One Trick Pony, watercolor, gouache and ink on paper, 12 x 12 inches, 2015



Cocksure, watercolor, gouache and ink on paper, 13.25 x 13.5 inches, 2015



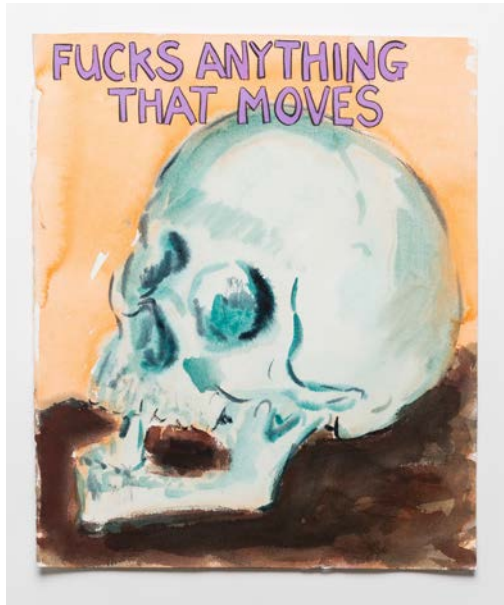
Unbelievable Nurturer, watercolor, gouache and ink on paper, 13.5 x 14 inches, 2015



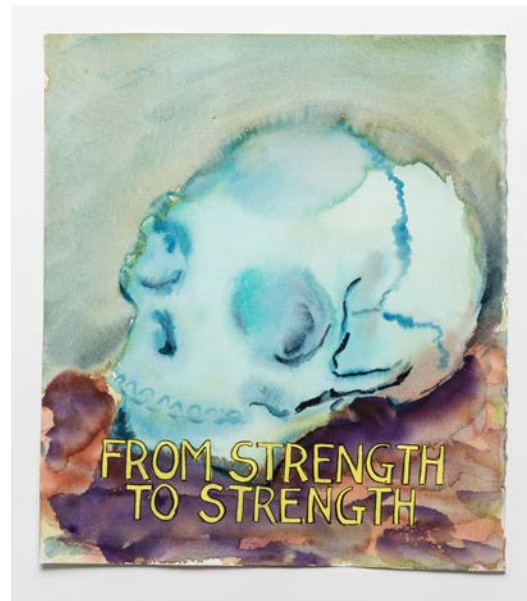
Unsatisfied, watercolor, gouache and ink on paper, 10.5 x 14.75 inches, 2015

GUY RICHARDS SMIT  
A MOUNTAIN OF SKULLS AND NOT ONE I RECOGNIZE

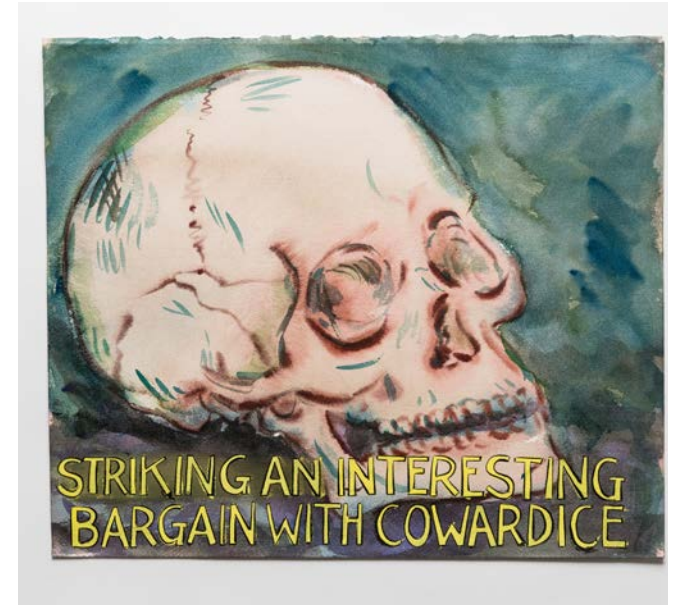
Medium Skulls



Fucks Anything That Moves  
watercolor, gouache and ink on  
paper  
16.75 x 14 inches  
2015



From Strength to Strength  
watercolor, gouache and ink on  
paper  
16 x 14 inches  
2015

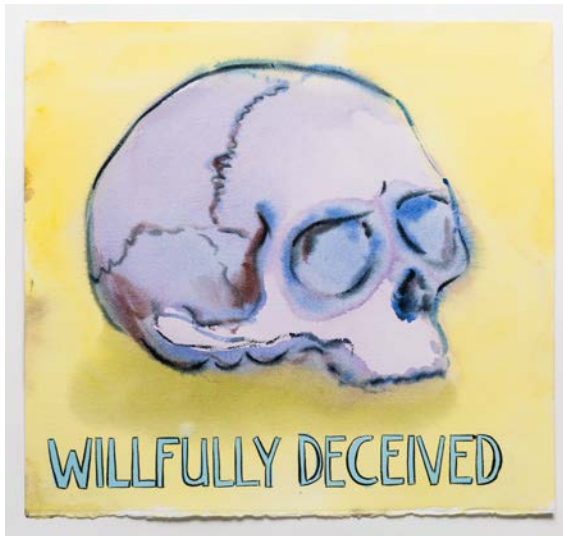


Striking An Interesting Bargain With  
Cowardice  
watercolor, gouache and ink on paper  
14.5 x 17 inches  
2015



GUY RICHARDS SMIT  
A MOUNTAIN OF SKULLS AND NOT ONE I RECOGNIZE

Medium Skulls



Willfully Deceived, watercolor, gouache and ink on paper, 15 x 16 inches, 2015



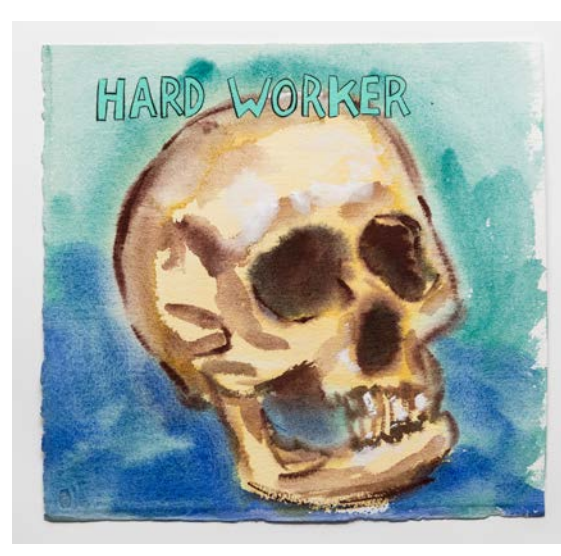
Triple Threat, watercolor, gouache and ink on paper, 15 x 15.75 inches, 2015



Blunted Affect, watercolor, gouache and ink on paper, 15 x 16 inches, 2015



Serious Misgivings, watercolor, gouache and ink on paper, 15 x 15 inches, 2015



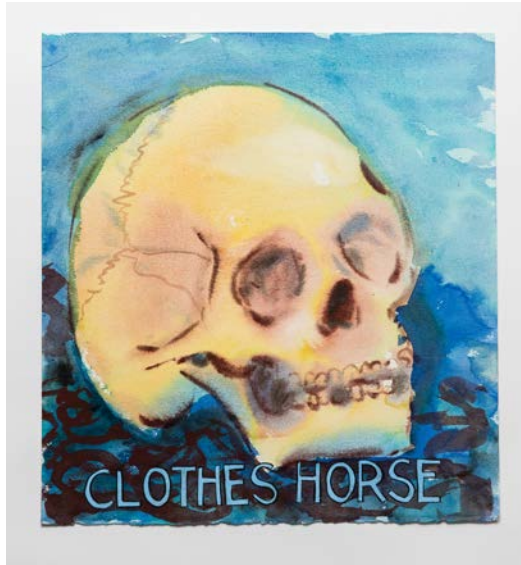
Hard Worker, watercolor, gouache and ink on paper, 14.5 x 15.5 inches, 2015



Squiper, watercolor, gouache and ink on paper, 14.25 x 15.25 inches, 2015

GUY RICHARDS SMIT  
A MOUNTAIN OF SKULLS AND NOT ONE I RECOGNIZE

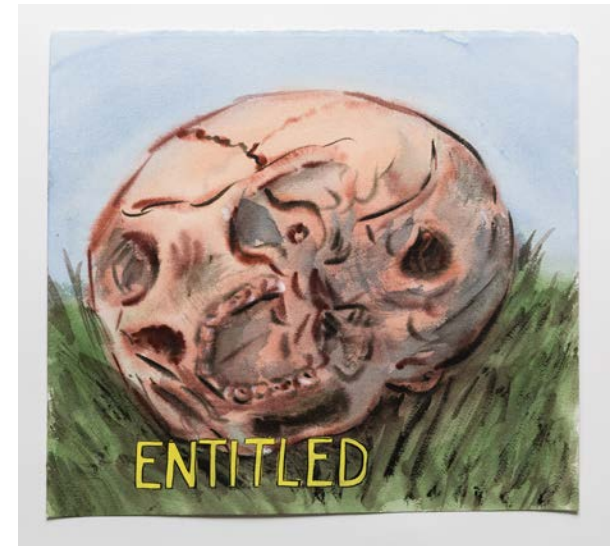
Medium Skulls



Clothes Horse, watercolor, gouache and ink on paper, 16 x 15 inches, 2015



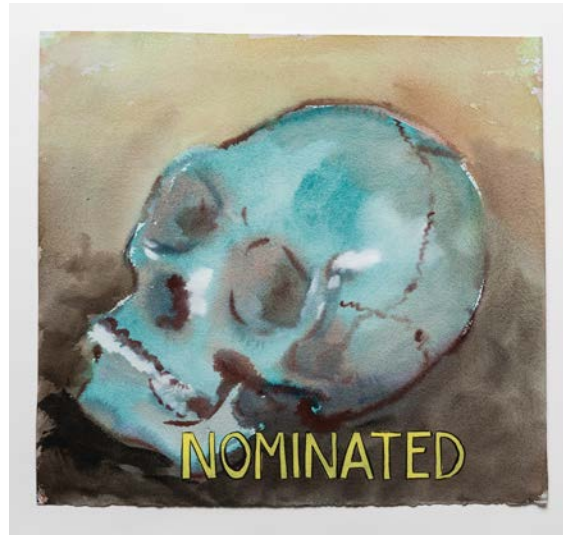
Aper of His Betters, watercolor, gouache and ink on paper, 16.5 x 17 inches, 2015



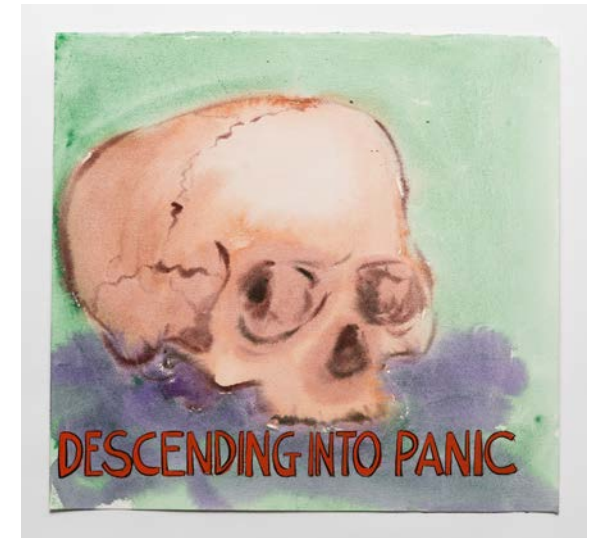
Entitled, watercolor, gouache and ink on paper, 14.5 x 16 inches, 2015



Leaves No One Guessing, watercolor, gouache and ink on paper, 15 x 16 inches, 2015



Nominated, watercolor, gouache and ink on paper, 14.75 x 15.75 inches, 2015



Descending Into Panic, watercolor, gouache and ink on paper, 15 x 16 inches, 2015

GUY RICHARDS SMIT  
A MOUNTAIN OF SKULLS AND NOT ONE I RECOGNIZE

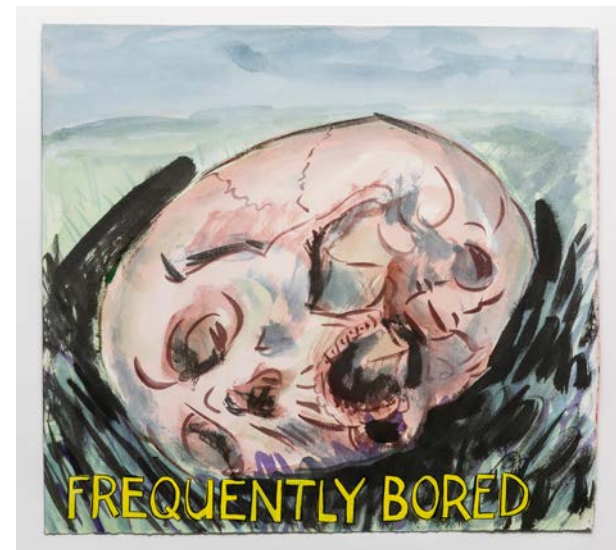
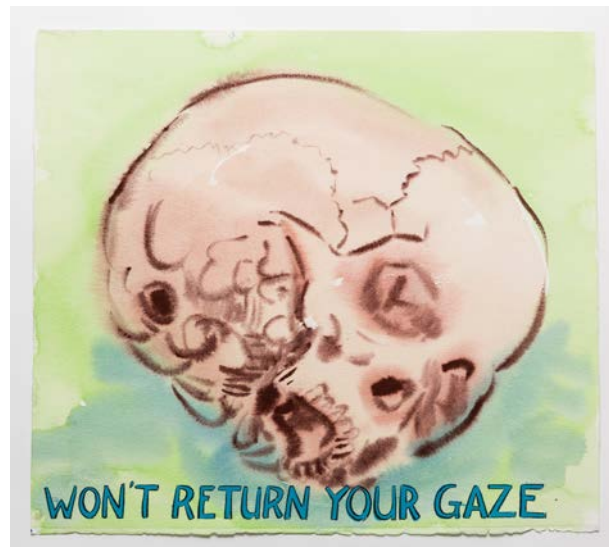
Medium Skulls

Hesitant Amorist  
watercolor,  
gouache and ink  
on paper,  
15 x 16 inches  
2015



First to Arrive,  
Last to Leave  
watercolor,  
gouache and ink  
on paper,  
14.75 x 17.75  
inches  
2015

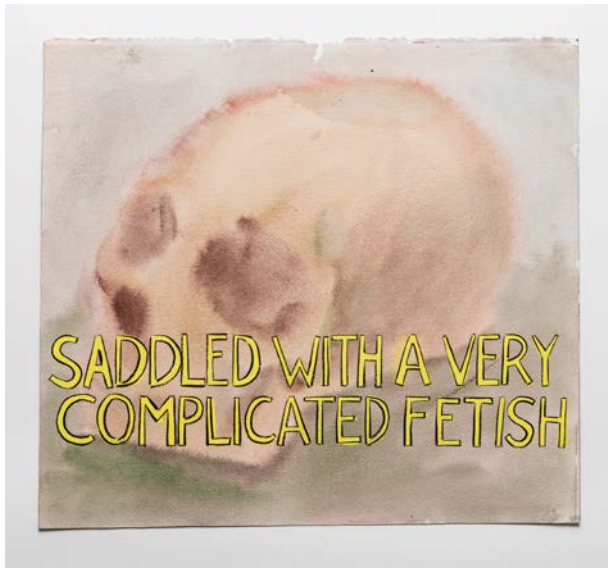
Won't Return  
Your Gaze  
watercolor,  
gouache and ink  
on paper,  
15 x 17 inches  
2015



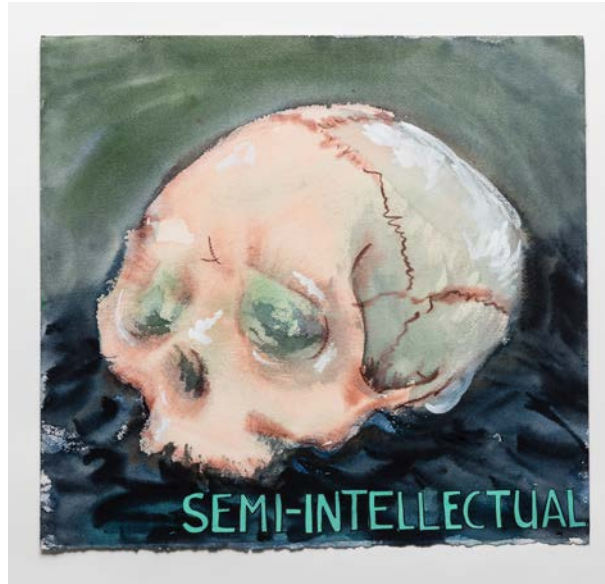
Frequently Bored  
watercolor,  
gouache and ink  
on paper,  
14.75 x 16  
inches  
2015

GUY RICHARDS SMIT  
A MOUNTAIN OF SKULLS AND NOT ONE I RECOGNIZE

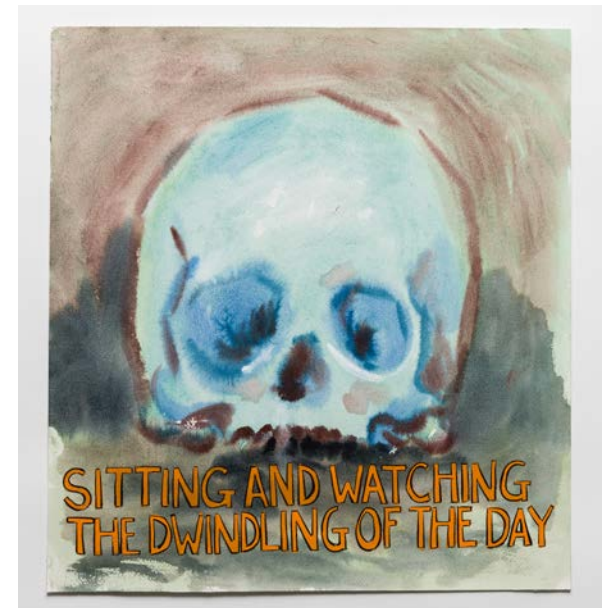
Medium Skulls



Saddled With a Very Complicated Fetish  
watercolor, gouache and ink on paper  
13.5 x 15 inches  
2015



Semi-Intellectual  
watercolor, gouache and ink on  
paper  
15 x 16 inches  
2015



Sitting and Watching the Dwindling of  
the Day  
watercolor, gouache and ink on paper  
15.75 x 14.75 inches  
2015

GUY RICHARDS SMIT  
A MOUNTAIN OF SKULLS AND NOT ONE I RECOGNIZE

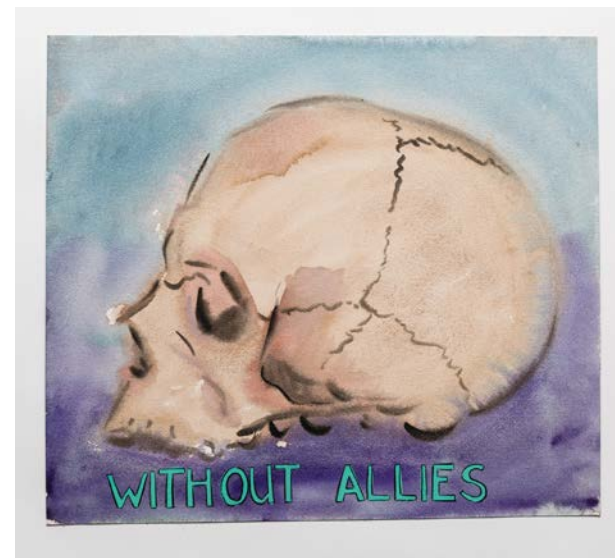
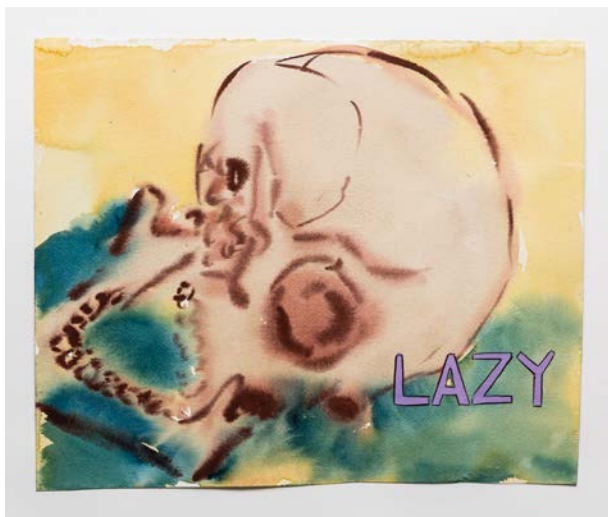
Medium Skulls

Protecting Her  
Interests  
watercolor,  
gouache and ink  
on paper,  
15 x 17 inches  
2015



Sees Malice Where  
None Exists  
watercolor,  
gouache and ink  
on paper,  
15.25 x 17  
inches  
2015

Lazy  
watercolor,  
gouache and ink  
on paper,  
12.25 x 15  
inches  
2015



Without Allies  
watercolor,  
gouache and ink  
on paper,  
14 x 16 inches  
2015

GUY RICHARDS SMIT

Medium Skulls

A MOUNTAIN OF SKULLS AND NOT ONE I RECOGNIZE



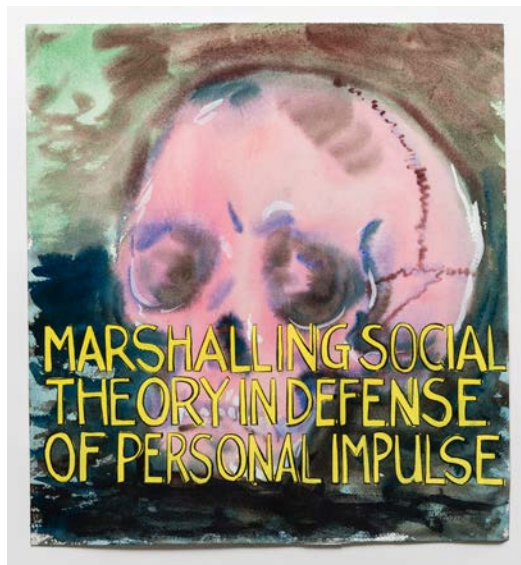
Inspiring, watercolor, gouache and ink on paper, 16 x 16.5 inches, 2015



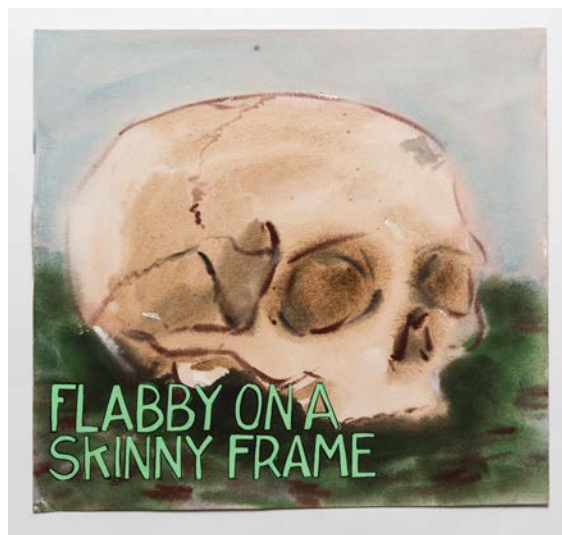
Your Friend At Arm's Length, watercolor, gouache and ink on paper, 16 x 15 inches, 2015



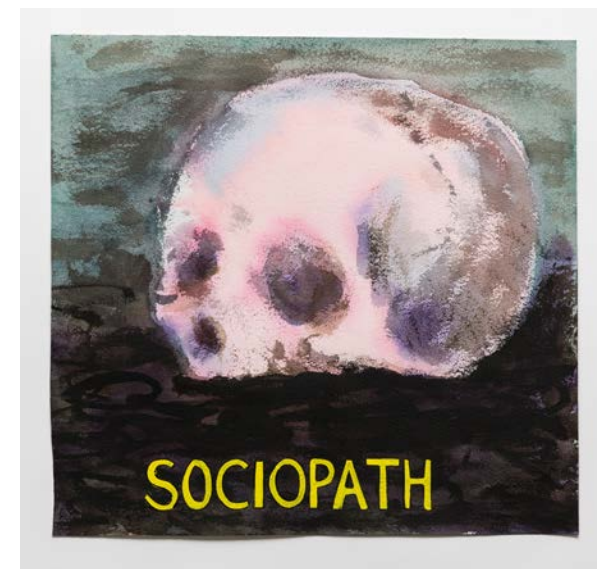
Hard Worker, watercolor, gouache and ink on paper, 14 x 16 inches, 2015



Marshalling Social Theory in Defense of Personal Impulse, watercolor, gouache and ink on paper, 16 x 14.75 inches, 2015



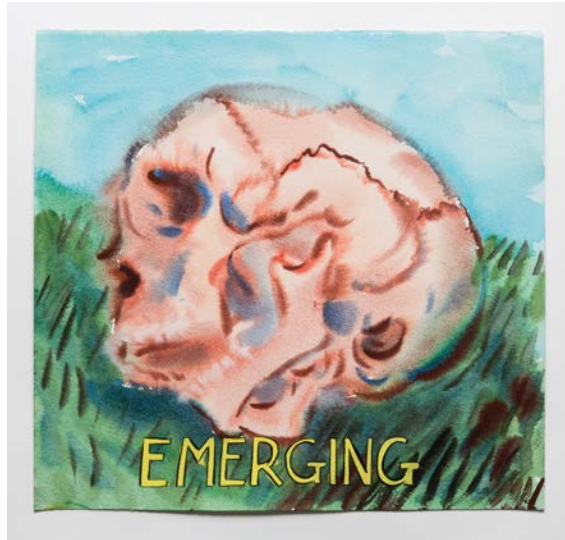
Flabby on a Skinny Frame, watercolor, gouache and ink on paper, 15 x 16 inches, 2015



Sociopath, watercolor, gouache and ink on paper, 15 x 16 inches, 2015

GUY RICHARDS SMIT  
A MOUNTAIN OF SKULLS AND NOT ONE I RECOGNIZE

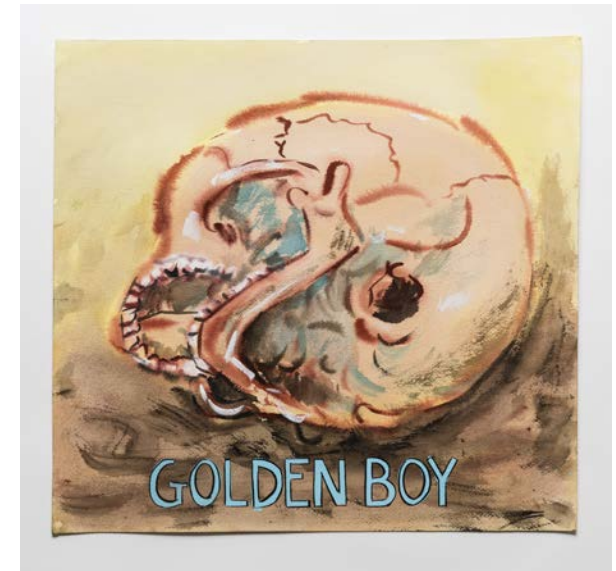
Medium Skulls



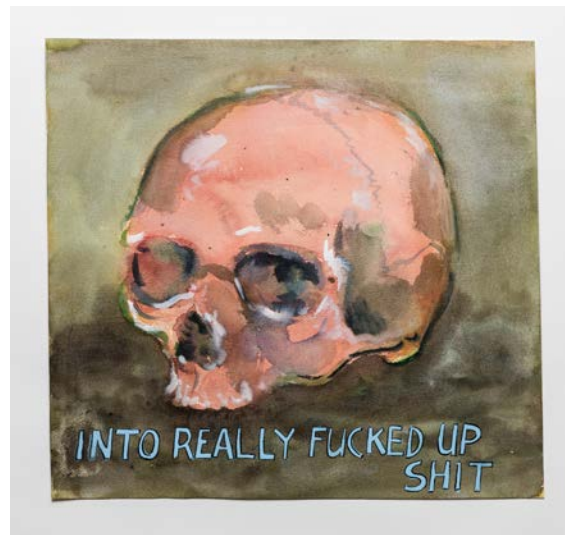
Emerging, watercolor, gouache and ink on paper, 15 x 16 inches, 2015



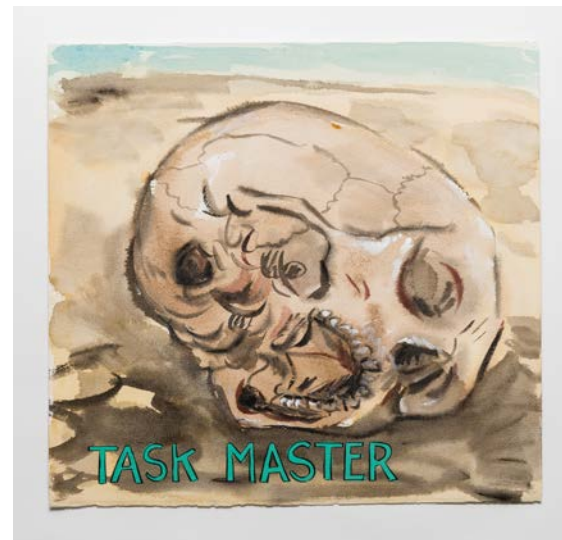
Drawn to Humiliation, watercolor, gouache and ink on paper, 15 x 16 inches, 2015



Golden Boy, watercolor, gouache and ink on paper, 15 x 16 inches, 2015



Into Really Fucked Up Shit, watercolor, gouache and ink on paper, 15 x 16 inches, 2015



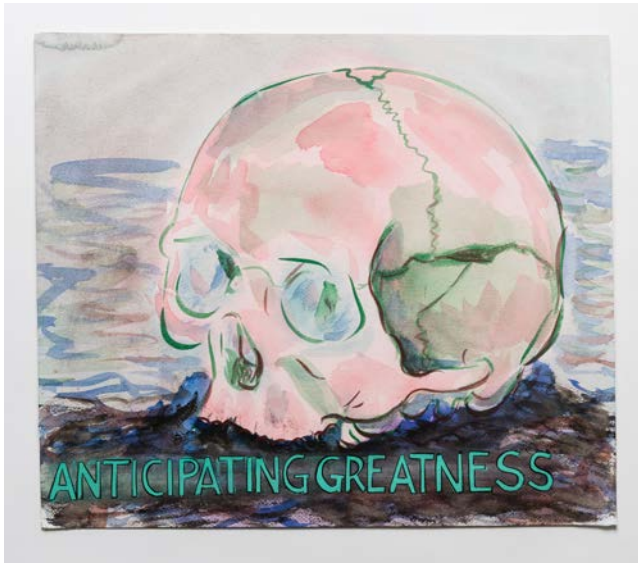
Task Master, watercolor, gouache and ink on paper, 15 x 16 inches, 2015



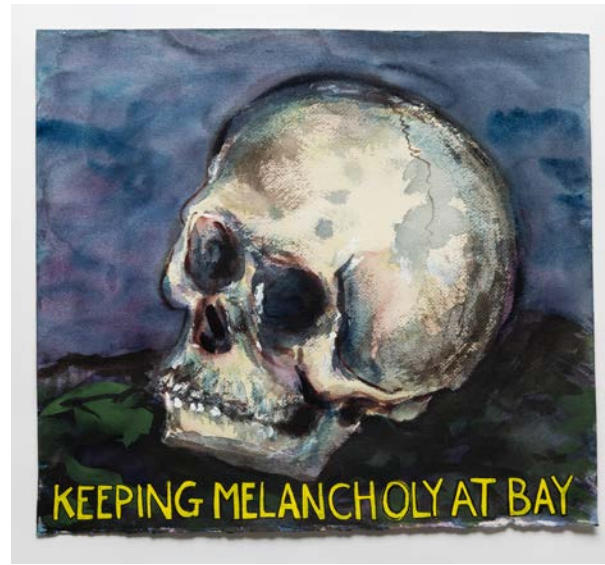
Quietly Disappointed, watercolor, gouache and ink on paper, 15 x 16 inches, 2015

GUY RICHARDS SMIT  
A MOUNTAIN OF SKULLS AND NOT ONE I RECOGNIZE

Medium Skulls



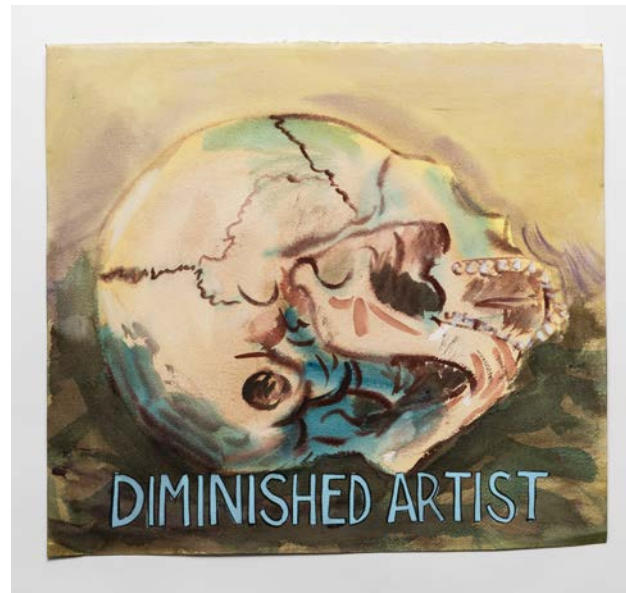
Anticipating  
Greatness  
watercolor,  
gouache and ink  
on paper,  
14.5 x 17 inches  
2015



Keeping Melancholy  
at Bay  
watercolor, gouache  
and ink on paper,  
14.75 x 16.25  
inches  
2015



Deeply  
Ambivalent  
watercolor,  
gouache and ink  
on paper,  
14.75 x 16  
inches  
2015



Diminished Artist  
watercolor,  
gouache and ink on  
paper,  
14.75 x 16 inches  
2015

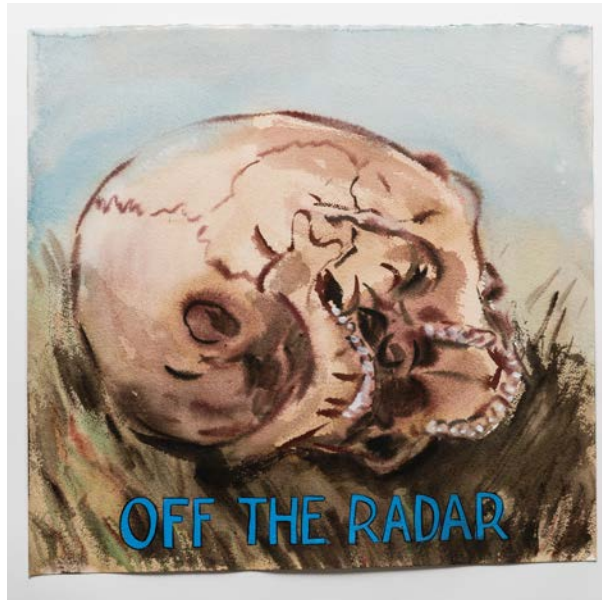


GUY RICHARDS SMIT  
A MOUNTAIN OF SKULLS AND NOT ONE I RECOGNIZE

Large Skulls



Sleepy  
watercolor, gouache and ink on paper  
17.5 x 18.25 inches  
2015



Off the Radar  
watercolor, gouache and ink on  
paper  
17 x 17.75 inches  
2015

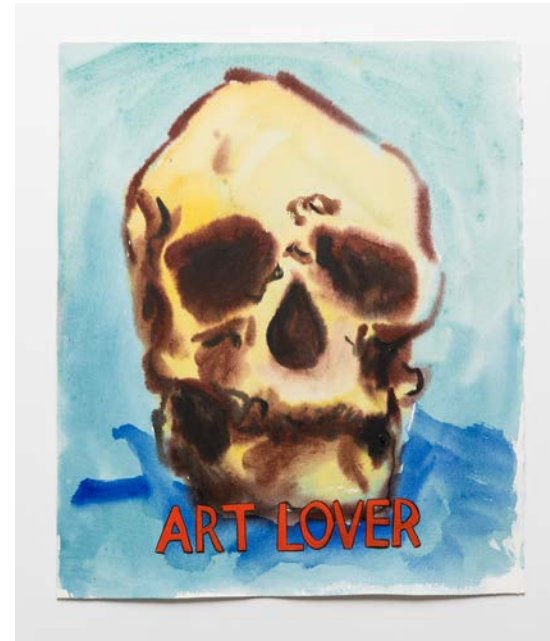
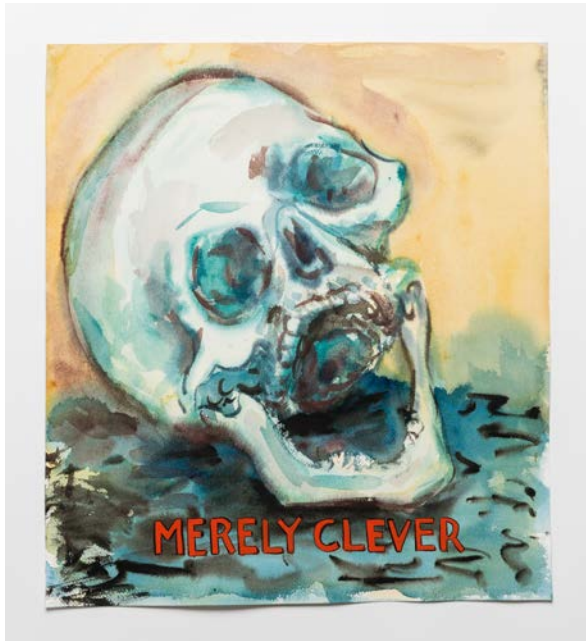


Boy Crazy  
watercolor, gouache and ink on paper  
18 x 17.5 inches  
2015

GUY RICHARDS SMIT  
A MOUNTAIN OF SKULLS AND NOT ONE I RECOGNIZE

Large Skulls

Merely Clever  
watercolor,  
gouache and ink  
on paper,  
18 x 16 inches  
2015



Art Lover  
watercolor, gouache  
and ink on paper,  
18 x 15.25  
inches  
2015

Does Not Love  
You Anymore  
watercolor,  
gouache and ink  
on paper,  
17 x 17.75  
inches  
2015



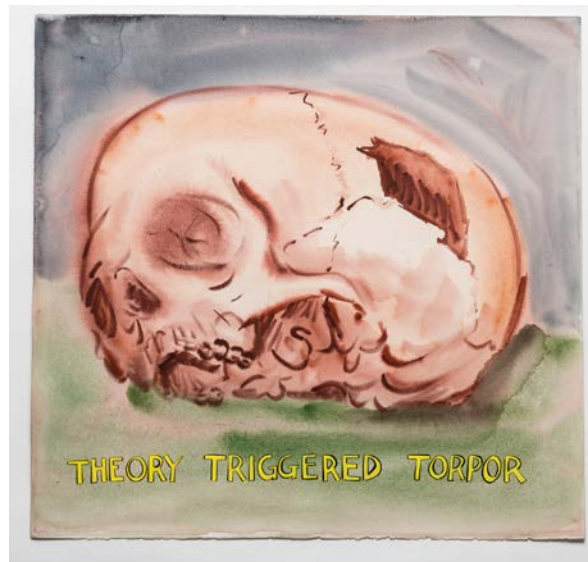
Over Talented  
watercolor,  
gouache and ink on  
paper,  
18 x 19 inches  
2015

GUY RICHARDS SMIT  
A MOUNTAIN OF SKULLS AND NOT ONE I RECOGNIZE

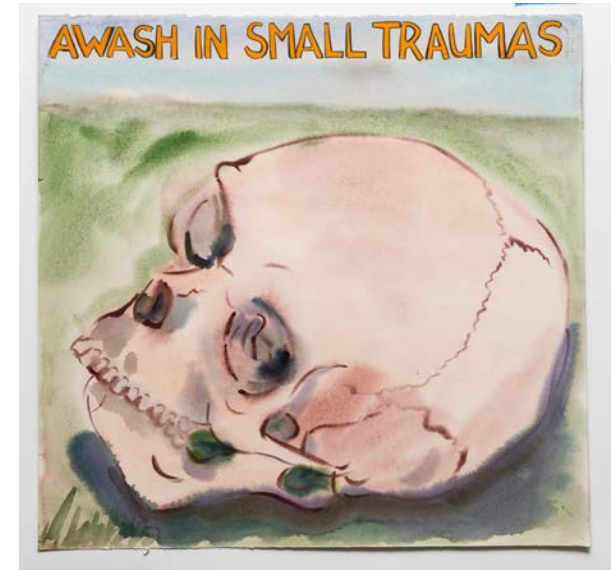
Large Skulls



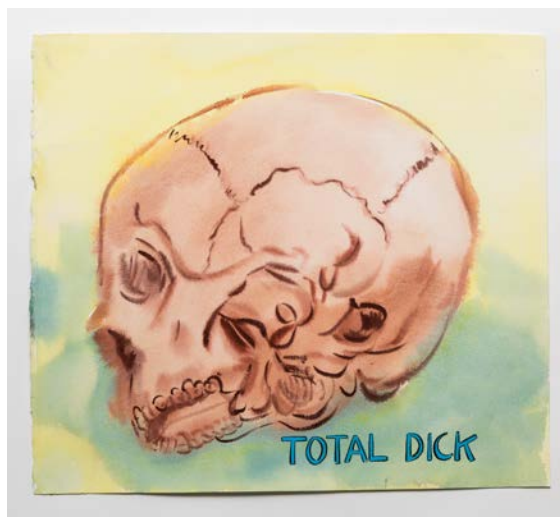
Tormented by Fleeting Sensations, watercolor, gouache and ink on paper, 17.5 x 17.5 inches, 2015



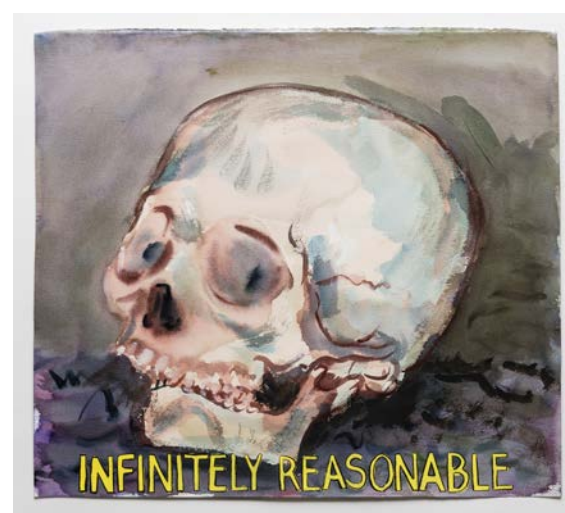
Theory Triggered Torpor, watercolor, gouache and ink on paper, 19 x 20 inches, 2015



Awash in Small Traumas, watercolor, gouache and ink on paper, 19 x 19.75 inches, 2015



Total Dick, watercolor, gouache and ink on paper, 16 x 18 inches, 2015



Infinitely Reasonable, watercolor, gouache and ink on paper, 17.75 x 20 inches, 2015



Managing Expectations, watercolor, gouache and ink on paper, 15.25 x 19 inches, 2015

GUY RICHARDS SMIT  
A MOUNTAIN OF SKULLS AND NOT ONE I RECOGNIZE



NY Times, Friday, September 13, 2013  
watercolor and gouache on paper  
*Detail 1 and 2*

GUY RICHARDS SMIT  
A MOUNTAIN OF SKULLS AND NOT ONE I RECOGNIZE



NY Times, Friday, September 13, 2013  
watercolor and gouache on paper  
Detail 9 and 10

GUY RICHARDS SMIT  
A MOUNTAIN OF SKULLS AND NOT ONE I RECOGNIZE



NY Times, Friday, September 13, 2013  
watercolor and gouache on paper  
Detail 23, 24 and 25

# GUY RICHARDS SMIT

## A MOUNTAIN OF SKULLS AND NOT ONE I RECOGNIZE

Guy Richards Smit

Born 1970, New York City

### EDUCATION

1996. MFA Mason Gross School of the Arts, Rutgers University  
1994. BFA Parsons School of Design  
1992 Rietveld Academie, Amsterdam, NL  
1988 Fiorello LaGuardia High School of Music and the Arts

### SELECTED SOLO EXHIBITIONS

2016 Charlie James Gallery, Los Angeles  
2015 Pulse Miami, Charlie James Gallery  
2014 The Boiler, Pierogi Gallery, Brooklyn, NY  
2012 BravinLee Programs, New York, NY  
2011 Schroeder Romero & Shredder, New York, NY  
2009 Fred [London] Ltd, London, UK  
He Said, She Said, Chicago, IL  
2008 Arco, Feria internacional, Madrid, Spain  
2007 Roebling Hall, New York, NY  
Fred [London] Ltd., London, UK  
2006 QED, Los Angeles, CA  
2005 Fred [London] Ltd., London, UK  
Nausea 2, Roebling Hall, New York, NY  
Nausea 2 (exhibition and screening), Indiana Museum of Contemporary Art, Indianapolis  
2004 Nausea 2 (screening), Premier Series, Museum of Modern Art, New York  
Here Comes Maxi, G-Module, Paris, France  
2003 Aeroplastics, Brussels, Belgium  
A Message to my Audience, Satellite, Manhattan, NY

2002 MOMA Media Scope, Museum of Modern Art, NY  
Angstrom Gallery, Dallas, Texas  
Team Gallery, New York, NY  
2001 I'm Mean Because I Like You, Voorkamer, Lier, Belgium  
Nylon Gallery, London, England  
2000 The Ballad of Bad Orpheus, Roebling Hall, Brooklyn, NY  
Havana Biennial, Official Video Selection, Havana, Cuba

### SELECTED GROUP EXHIBITIONS

2016 SPRING BREAK, Farley Post Office, NY, NY  
2015 STAND UP! Centre Pompidou, Paris France  
2013 Burying the Lede, Curated by Adam Simon, Momenta Art, Brooklyn, NY  
2011 Dublin Contemporary 2011, Curated by Christian Viveros Faune and Jota Kosta, Dublin, Ireland  
2010 Dirty Kunst, Seventeen Gallery, London, UK  
2010 Spasticus Artisticus, Curated by Christian Viveros Faune and Jota Kosta, Cheri Hand Gallery, Liverpool, UK  
2009 Born in the Morning, Dead by Night, Curated by Toni Matelli, Leo Koenig Gallery, NYC  
Popisme, Le Lieu Unique, Curated by Frank Lamy, Nantes, France  
2008 The World Needs a Narrative, Kevin Kavanagh Gallery, Dublin, Ireland  
2007 No Future, Curated by David G. Torres, Bloomberg Space, London, UK  
Cesi N'est Pas..., curated by Rachel Gugelberger and Jeffrey Walkowiak

# GUY RICHARDS SMIT

## A MOUNTAIN OF SKULLS AND NOT ONE I RECOGNIZE

### AWARDS AND RESIDENCiES

Art In Review, Roberta Smith, New York Times,  
March 10, 2000

- 2014 2014 Lighton International Artist Exchange Program Award
- 2013 Het Vijfde Seizoen, a two month, fully funded artist's residency with honorarium on the grounds of a psychiatric hospital in The Netherlands
- 2009 Joan Mitchell Foundation to attend the Atlantic Center for the Arts residency program.
- 2004 Penny McCall Foundation Award

### SELECTED BIBLIOGRAPHY

- Why Isn't Art Funny More Often, Whitney Kimball, vice.com, January, 26, 2015
- Art As A Vehicle For Conversation: The World of Jonathan Grossmalerman, Lori Zimmer, Huffington Post, April 9, 2014
- Art In Review, Roberta Smith, New York Times, October 17, 2013
- Grossmalerman monthly column, ArtReview, September 2011-Present
- Grossmalerman occasional column, Hyperallergic, January 2013-present
- Comic Relief (cover story), Carolina Miranda, ART-news, October 2011
- Portrait of the Artis in Comix, Kyle Chayka, Hyperallergic, January 2011
- "Stepping Out of Character and into His Art," Blake Gopnik, Washington Post, December 5, 2004
- "Guy Richards Smit" William Powhida, The Brooklyn Rail, 2004
- "Top Ten," Guy Richards Smit, Artforum, May, 2003