

WILLIAM POWHIDA
POSSIBILITIES FOR REPRESENTATION



WILLIAM POWHIDA

POSSIBILITIES FOR REPRESENTATION

POSSIBILITIES FOR REPRESENTATION - THE INSTALLATION

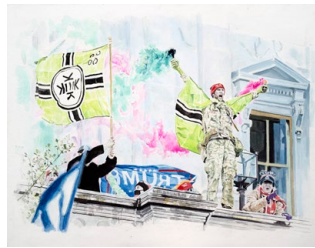
In this show, imported directly from the Aldrich Contemporary Art Museum in Ridgefield, CT, William Powhida deconstructs the history of America as a “settler-colonial project,” a paradigm which has imprinted structures of white supremacy and “racial capitalism” on the DNA of the country, original sins the country is battling to overcome to this day.

In a massive timeline installation covering two of the three walls in the gallery’s main chamber, Powhida traces the history of the country along distinct political lines from the Colonial days to the present and to the future. The *centrist line* (purple) runs through the middle of the installation, but sometimes shifts directionally with the political climate; the *progressive line* (blue) runs below the centrist line and flows in arcs following shifts in the Democratic Party and the evolution of Democratic Socialism, while the *conservative line* (red) runs above the centrist line and traces the march rightward of the Republican Party. Leftward tendencies intensify as we move down the wall towards the dotted red line denoting *left wing extremism*, while movement up the wall towards the dotted black line points to *right wing extremism*. The *green line is the money line, the billionaire line*.

All of these lines and their progressions along the timeline are marked with corresponding portraits of political leaders and emblematic historical scenes beautifully executed on panel in gouache and watercolor by Powhida. The lines move through the present, where Powhida unpacks the 2020 election and its aftermath in great detail before giving way to a series of speculative futures - each tied to one of the political through-lines. To illustrate these various possible future(s), Powhida has created paintings of well-known film and literary narratives that show the possible culmination of each political line. What will decades of ongoing Centrism beget? What does the world look like after a drift into right or left wing extremism? A world run by billionaires? An embrace of progressive politics?? This show offers an array of possible outcomes for our consideration.



Far From Heaven (Nostalgia)

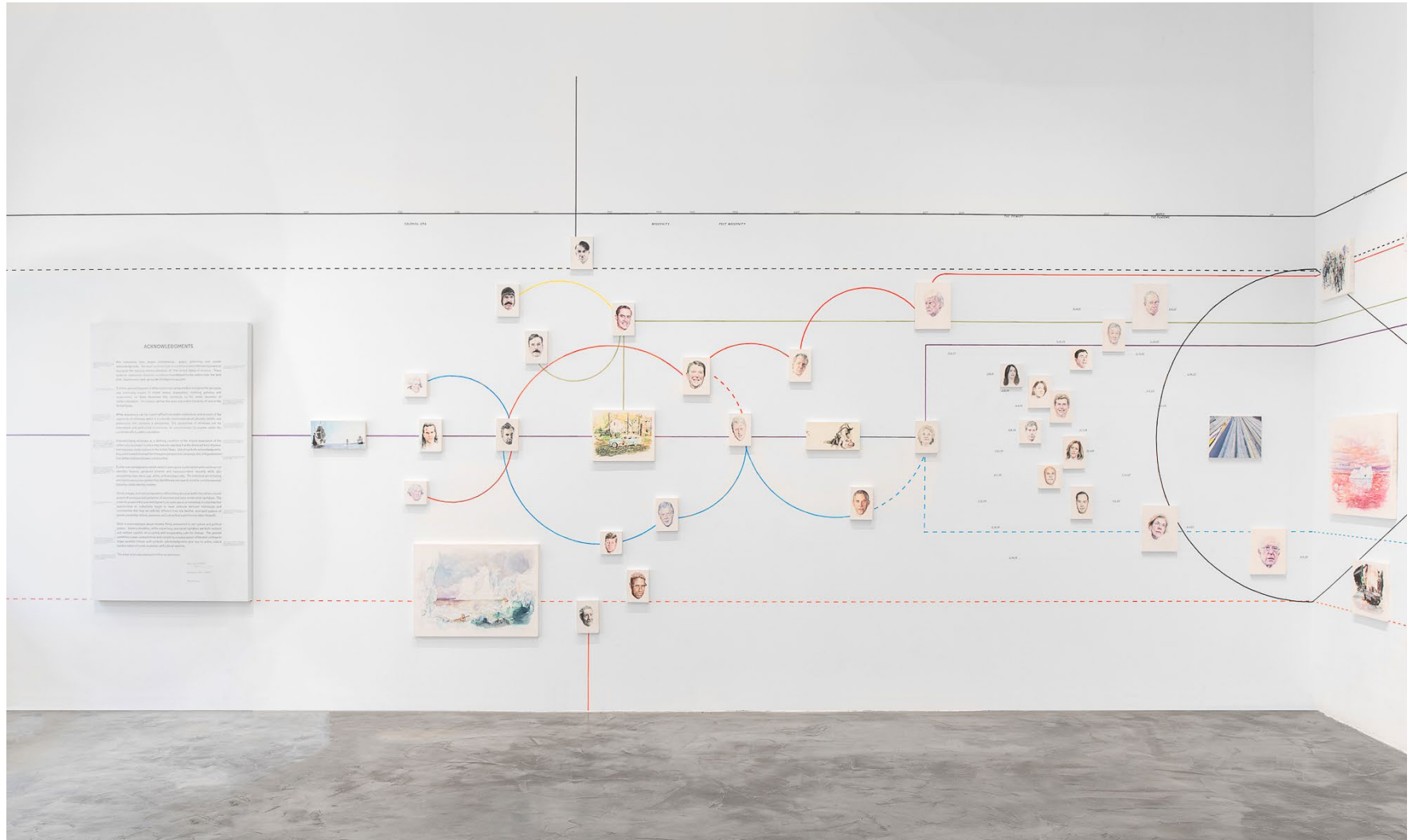


Capitol Insurrection
(White Supremacy)



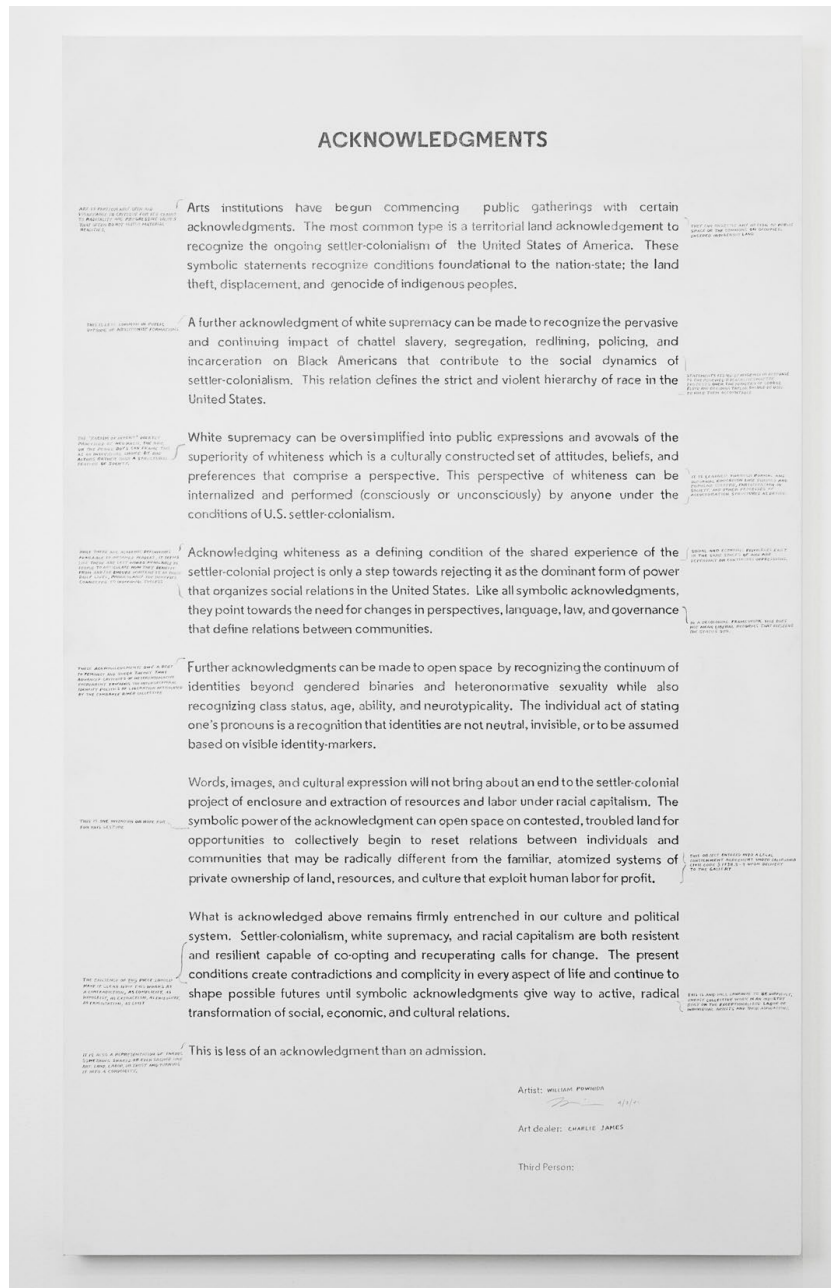
The Road (Climate Catastrophe)

WILLIAM POWHIDA POSSIBILITIES FOR REPRESENTATION



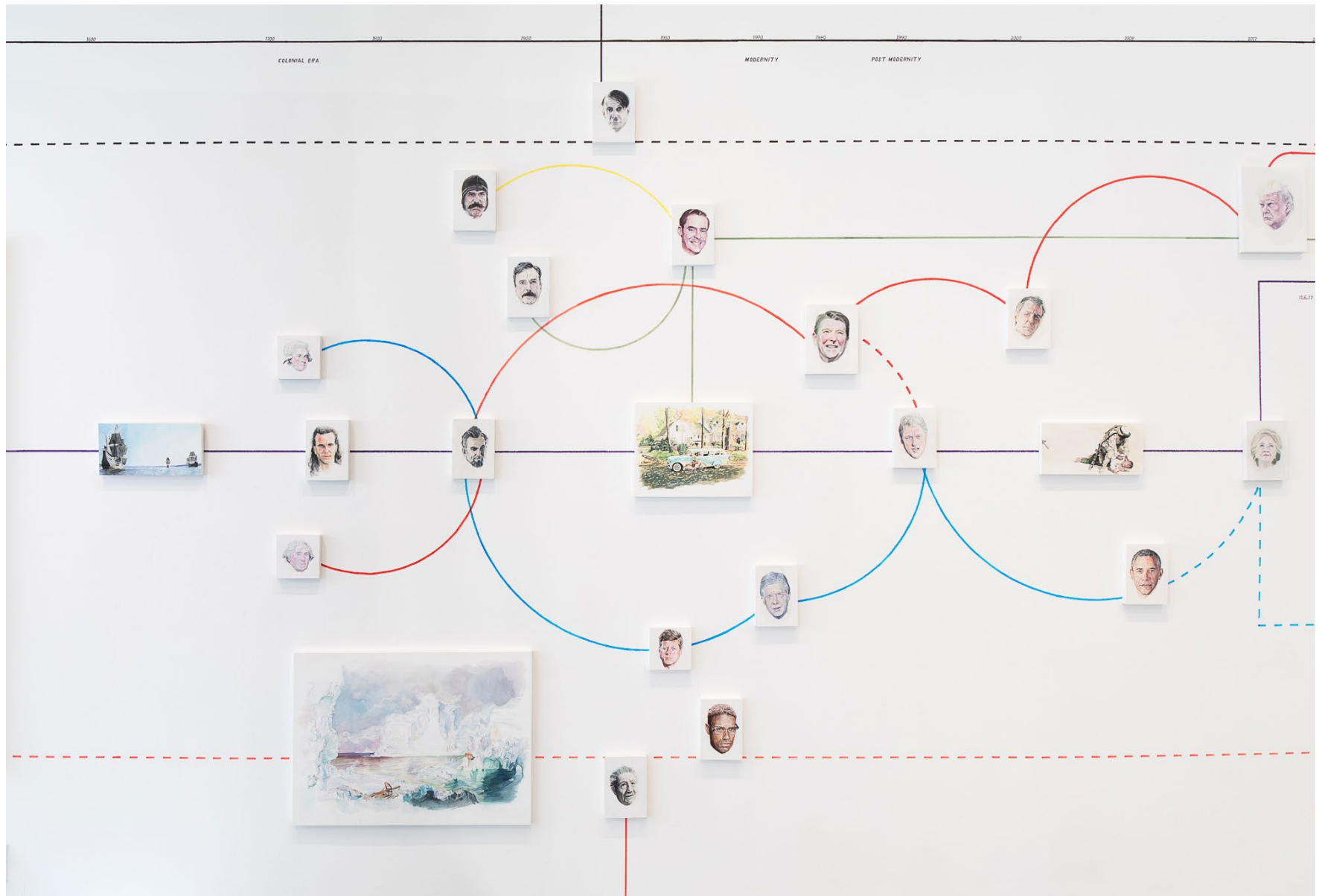
WILLIAM POWHIDA

POSSIBILITIES FOR REPRESENTATION









Acknowledgments
Graphite and
watercolor on panel
36 x 60 inches
2021

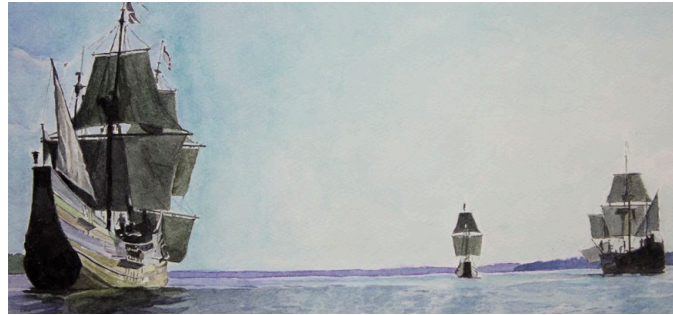
WILLIAM POWHIDA POSSIBILITIES FOR REPRESENTATION



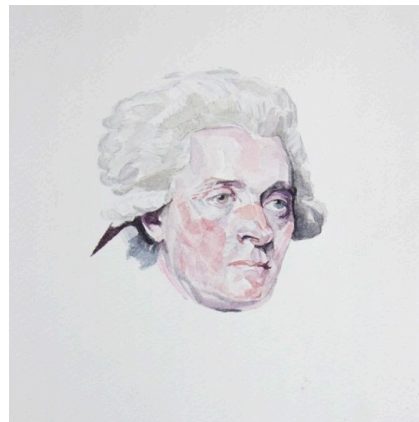
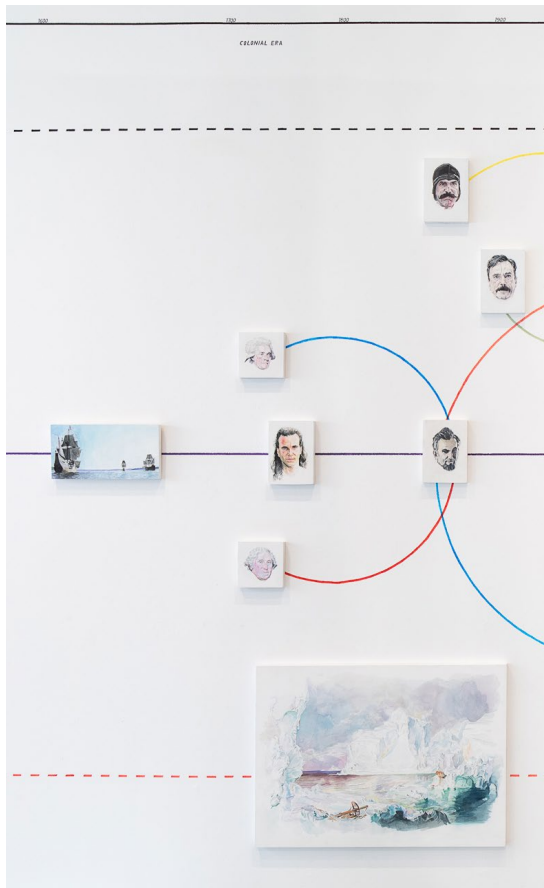
WILLIAM POWHIDA POSSIBILITIES FOR REPRESENTATION

COLONIAL ERA

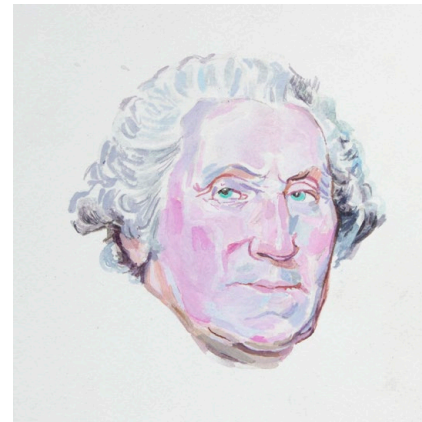
Far Right  Centrism 
 Billionaire  Liberalism 
 Conservatism  Far Left 



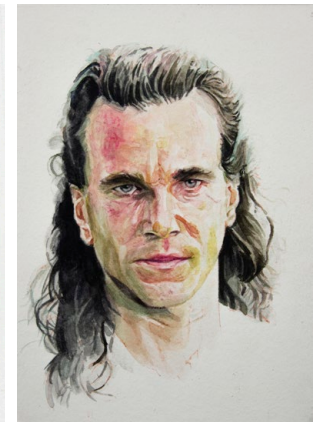
The New World (indigenous genocide)
 Watercolor on paper mounted on panel
 12 x 6 inches
 2021



Thomas Jefferson
 (Anti-Federalist)
 Watercolor and gouache
 on paper mounted on panel
 5 x 5 inches
 2020



George Washington
 (Federalist)
 Watercolor and gouache
 on paper mounted on panel
 5 x 5 inches
 2020









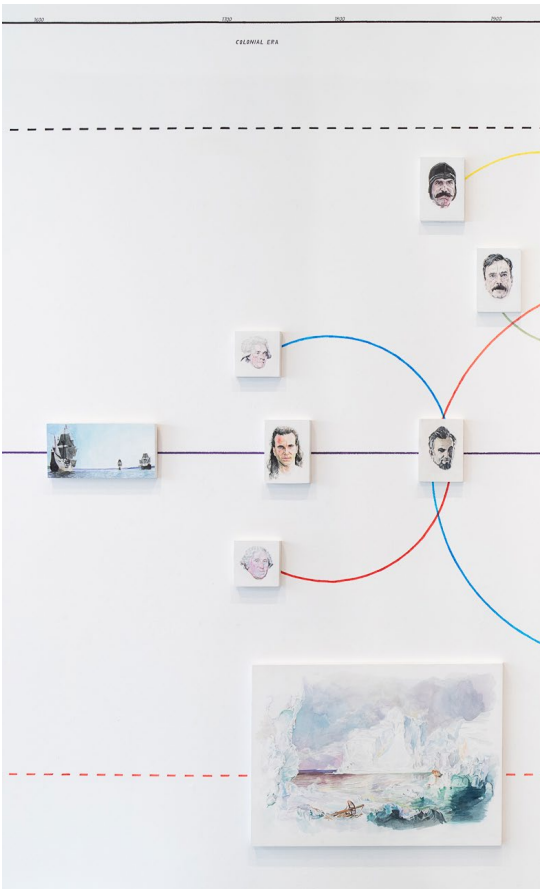
Daniel Day-Lewis as Hawkeye
 (Settler adoption fantasy)
 Watercolor and *Last of the Mohicans*
 on paper mounted on panel
 5 x 7 inches
 2021

WILLIAM POWHIDA

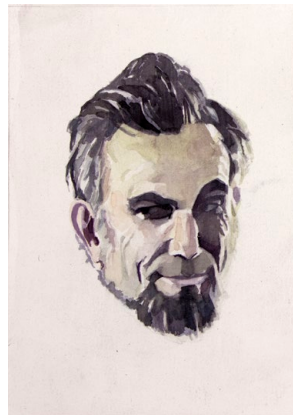
POSSIBILITIES FOR REPRESENTATION

1800-1900

Far Right  Centrism 
 Billionaire  Liberalism 
 Conservatism  Far Left 



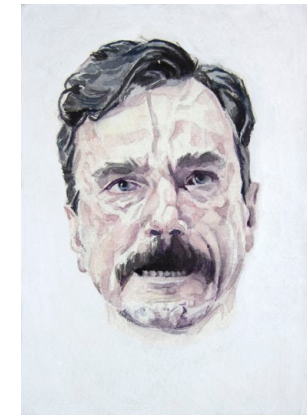
The Icebergs by Frederic Edwin Church, 1861 (Romanticism)
 Watercolor on paper mounted on panel
 28 x 20 inches
 2020



Daniel Day-Lewis as Abraham Lincoln (Republican)
 Watercolor and *Lincoln* on paper mounted on panel
 5 x 7 inches
 2020



Daniel Day-Lewis as William Poole/Bill "The Butcher" (Nativist)
 Watercolor and *Gangs of New York* on paper mounted on panel
 5 x 7 inches
 2020



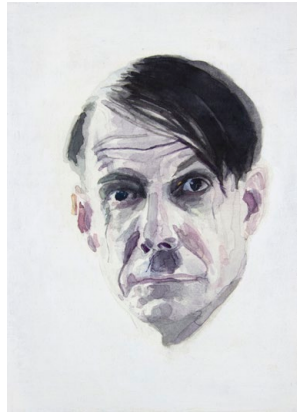
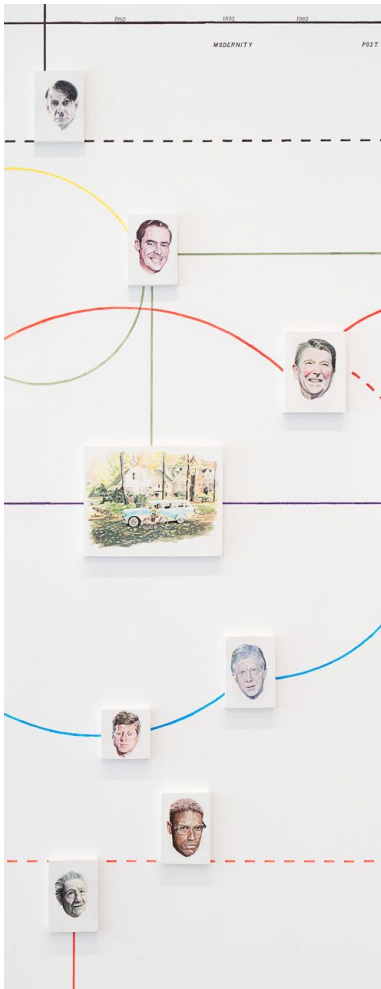
Daniel Day-Lewis as Daniel Plainview (Fictional Capitalist)
 Watercolor and *There Will be Blood* on paper mounted on panel
 5 x 7 inches
 2020

WILLIAM POWHIDA

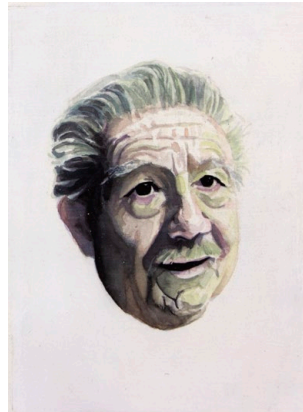
POSSIBILITIES FOR REPRESENTATION

MODERNITY

Far Right ——— Centrist
 Billionaire ——— Liberalism
 Conservatism ——— Far Left



Noah Taylor as Hitler (Nazi)
 Watercolor and Max on paper mounted on panel
 5 x 7 inches
 2020



Adrian McLoughlin as Joseph Stalin (Stalinist)
 Watercolor and *The Death of Stalin* on paper mounted on panel
 5 x 7 inches
 2020



John F. Kennedy (Democrat)
 Watercolor on paper mounted on panel
 5 x 5 inches
 2021



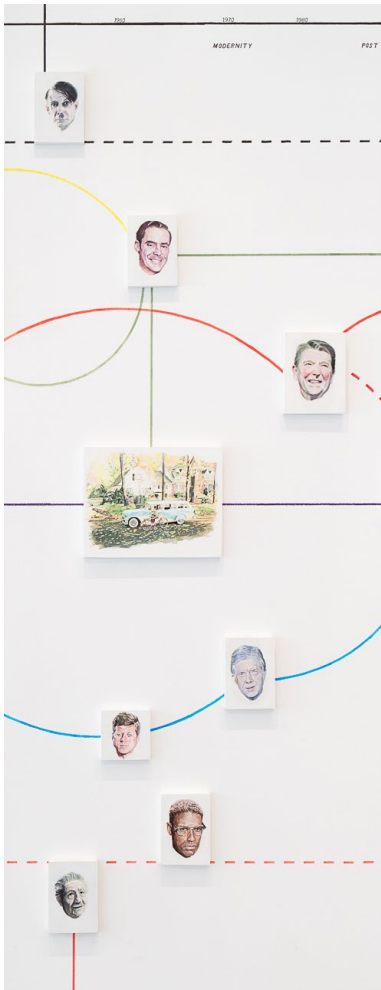
Far From Heaven (Nostalgia)
 Watercolor and gouache on paper mounted on panel
 14 x 11 inches
 2021

WILLIAM POWHIDA

POSSIBILITIES FOR REPRESENTATION

MODERNITY

Far Right ——— Centrist
 Billionaire ——— Liberalism
 Conservatism ——— Far Left



Fred Trump
 (Real Estate, KKK)
 Watercolor on paper
 mounted on panel
 5 x 7 inches
 2020



Ronald Reagan
 (Actor, Republican)
 Watercolor on paper
 mounted on panel
 6 x 8 inches
 2020



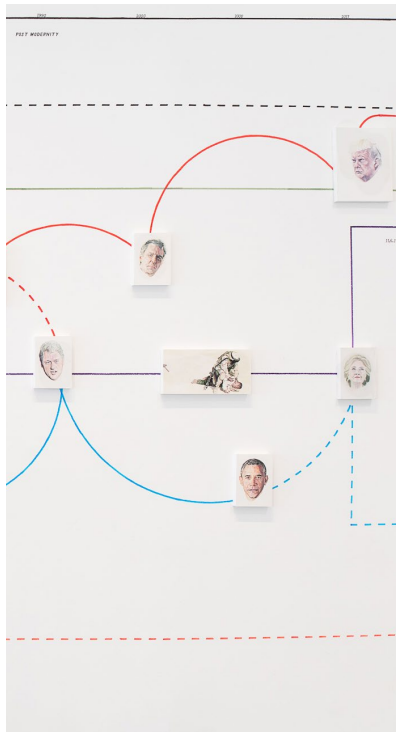
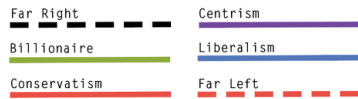
Denzel Washington
 as Malcolm-X
 (Black nationalist)
 Watercolor and
Malcolm-X on paper
 mounted on panel
 5 x 7 inches
 2021



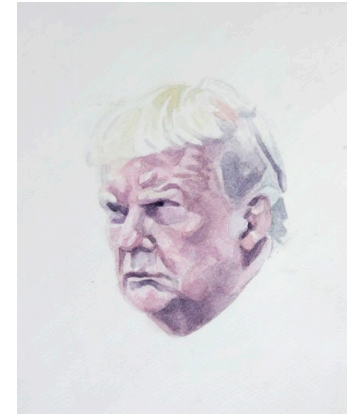
Jimmy Carter (Democrat)
 Watercolor and
 gouache on paper
 mounted on panel
 5 x 7 inches
 2021

WILLIAM POWHIDA POSSIBILITIES FOR REPRESENTATION

POST MODERNITY



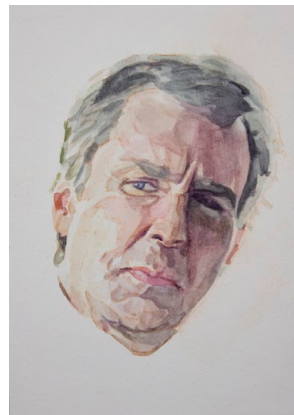
The Green Zone
(U.S. Imperialism)
Watercolor on paper
mounted on panel
12 x 6 inches
2021



Donald Trump (Republican
Presidential, Incumbent)
Watercolor on paper mounted
on panel
8 x 10 inches
2020



Bill Clinton (Democrat)
Watercolor on paper
mounted on panel
5 x 7 inches
2021



**Sam Rockwell as
George W. Bush**
(Republican, war criminal)
Watercolor and *Vice*
on paper mounted on panel
5 x 7 inches
2021

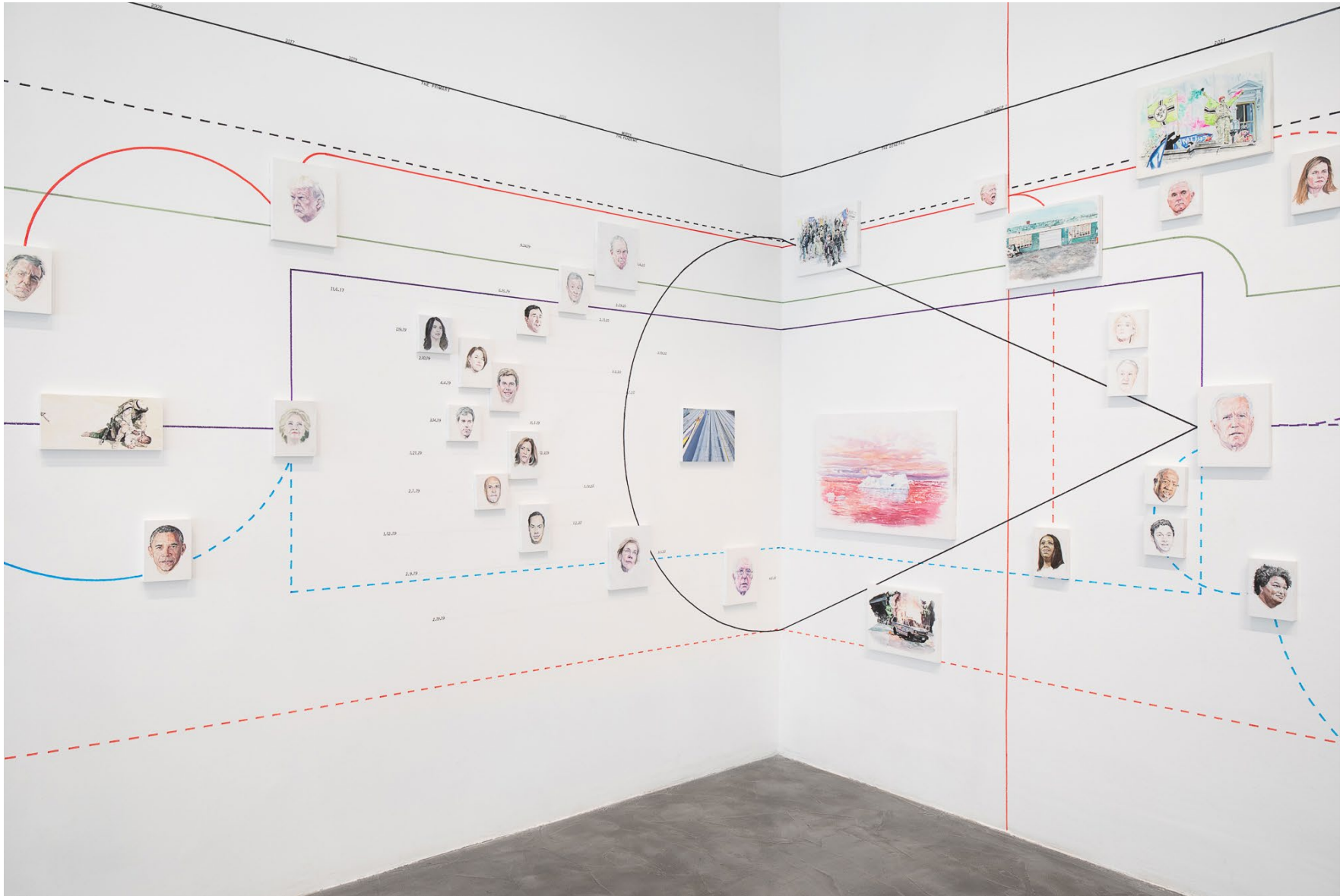


Barack Obama (Democrat)
Watercolor and gouache
on paper mounted on panel
5 x 7 inches
2021



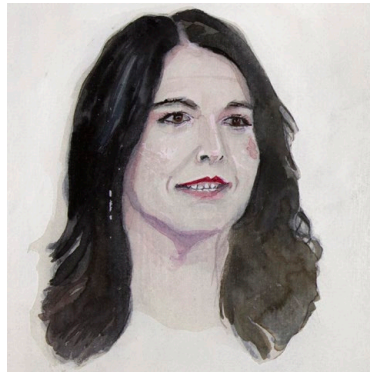
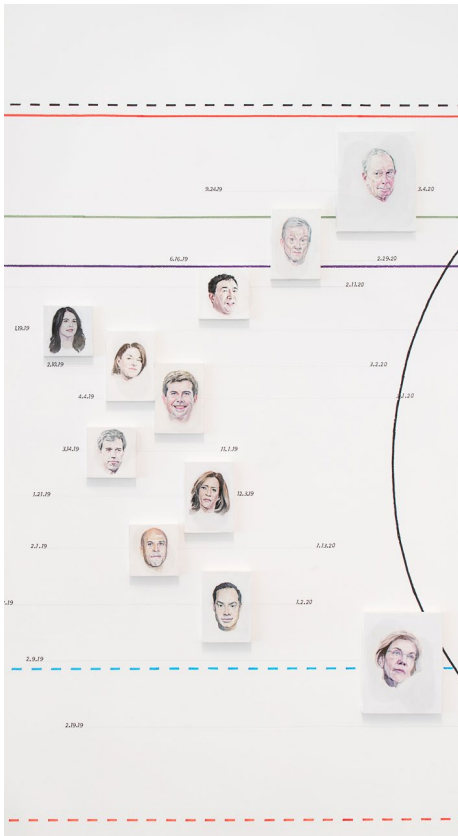
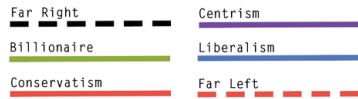
Hillary Clinton (Democrat)
Watercolor on paper
mounted on panel
5 x 7 inches
2020

WILLIAM POWHIDA POSSIBILITIES FOR REPRESENTATION

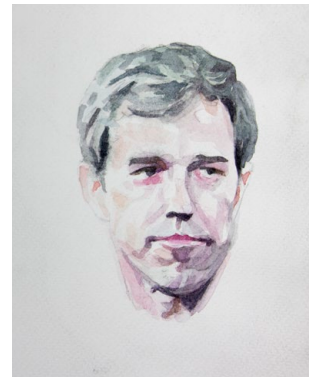


WILLIAM POWHIDA POSSIBILITIES FOR REPRESENTATION

THE PRIMARY



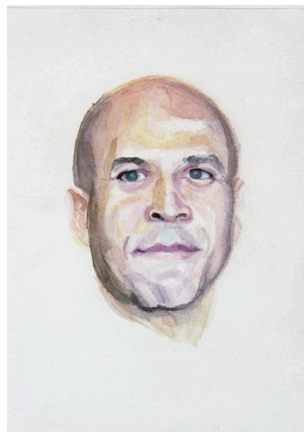
Tulsi Gabbard
(Democrat?)
Watercolor on paper
mounted on panel
5 x 5 inches
2020



Beto O'Rourke
(Democrat)
Watercolor on paper
mounted on panel
5 x 5 inches
2020



Amy Klobuchar
(Democrat)
Watercolor on paper
mounted on panel
5 x 7 inches
2020



Cory Booker (Democrat)
Watercolor on paper
mounted on panel
5 x 5 inches
2020



Pete Buttigieg
(Democrat)
Watercolor on paper
mounted on panel
5 x 7 inches
2020





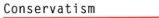



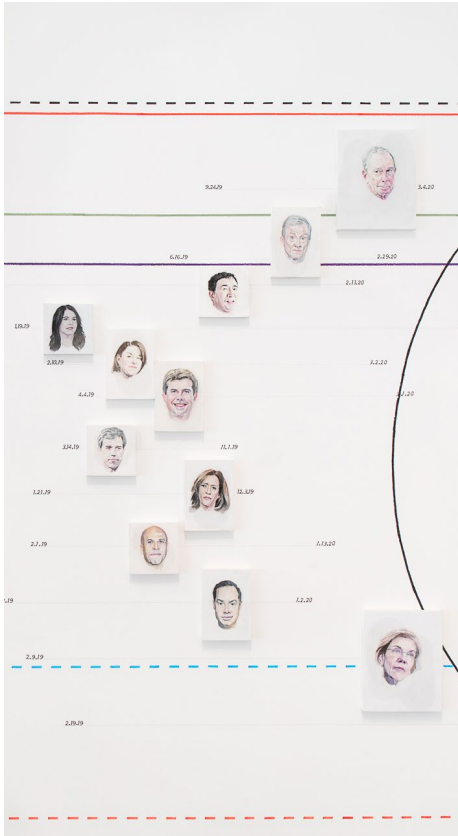
Kamala Harris
(Democrat)
Watercolor on paper
mounted on panel
5 x 7 inches
2020

WILLIAM POWHIDA

POSSIBILITIES FOR REPRESENTATION

THE PRIMARY

Far Right  Centrism 
 Billionaire  Liberalism 
 Conservatism  Far Left 



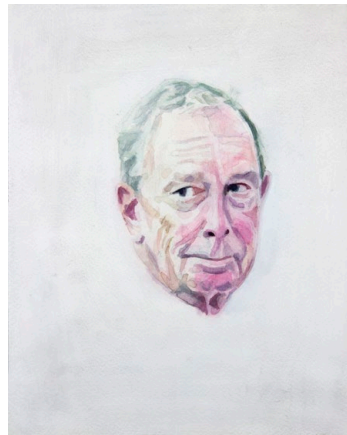
Julián Castro (Democrat)
 Watercolor on paper
 mounted on panel
 5 x 7 inches
 2020



Andrew Yang (Democrat, Disruptor)
 Watercolor on paper mounted on panel
 5 x 5 inches
 2020



Tom Steyer (Capitalist)
 Watercolor on paper
 mounted on panel
 5 x 7 inches
 2020



Michael Bloomberg (Capitalist)
 Watercolor on paper
 mounted on panel
 8 x 10 inches
 2020



Elizabeth Warren (Democrat)
 Watercolor on paper
 mounted on panel
 8 x 10 inches
 2020

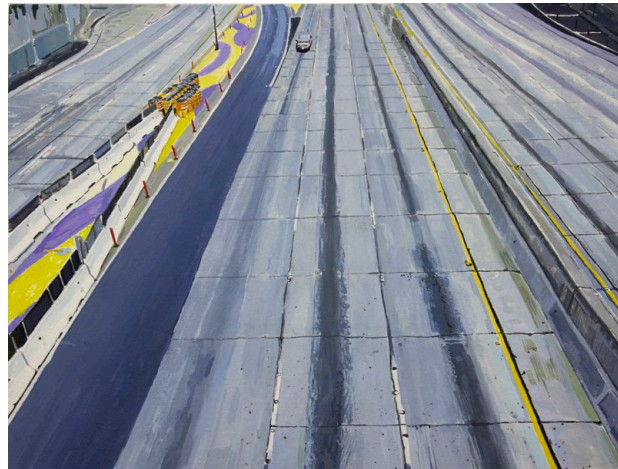


Bernie Sanders (Democratic Socialist)
 Watercolor on paper
 mounted on panel
 8 x 10 inches
 2021

WILLIAM POWHIDA POSSIBILITIES FOR REPRESENTATION

THE PANDEMIC

Far Right	Centrism
Billionaire	Liberalism
Conservatism	Far Left



Pandemic (Los Angeles)
Watercolor on paper mounted on panel
12 x 9 inches
2021



Wisconsin Protests (White Supremacy/Boogaloo)
Watercolor on paper mounted on panel
14 x 11 inches
2020



Antarctica (Realism)
Watercolor on paper mounted on panel
28 x 20 inches
2020



George Floyd Protest (Decolonization)
Watercolor on paper mounted on panel
14 x 11 inches
2020

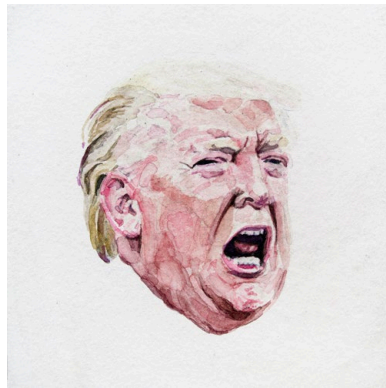
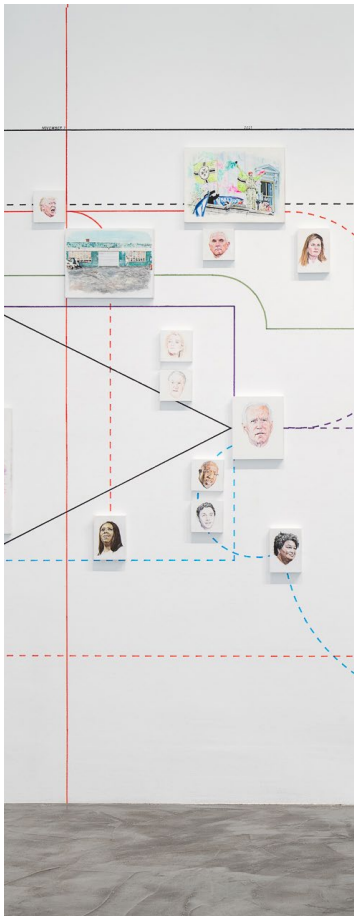
WILLIAM POWHIDA POSSIBILITIES FOR REPRESENTATION



WILLIAM POWHIDA POSSIBILITIES FOR REPRESENTATION

THE 2020 ELECTION

Far Right ——— Centrism
 Billionaire ——— Liberalism
 Conservatism ——— Far Left



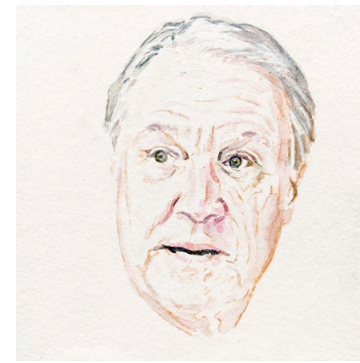
Trump (Former US president, loser)
 Watercolor on paper
 mounted on panel
 5 x 5 inches
 2020



Four Seasons
 Total Landscaping
 (Terminal loss)
 Watercolor on paper
 mounted on panel
 14 x 11 inches
 2020



Kelly Loeffler
 (GA-Republican, loser)
 Watercolor on paper
 mounted on panel
 5 x 5 inches
 2020



David Perdue
 (GA-Republican, loser)
 Watercolor on paper
 mounted on panel
 5 x 5 inches
 2020



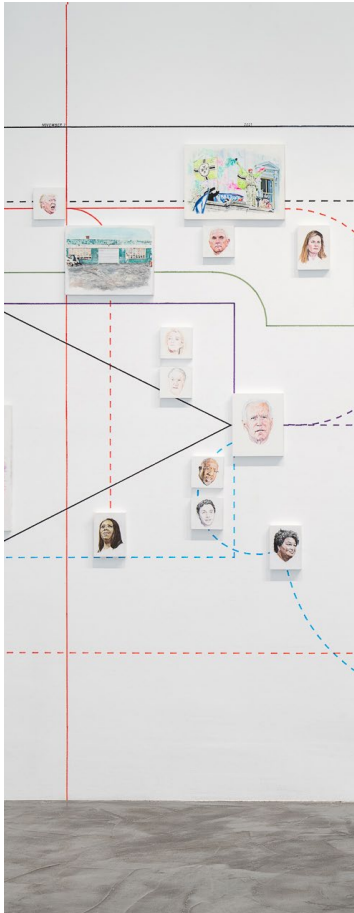
Letitia James
 (NYS Attorney General, Justice)
 Watercolor on paper
 mounted on panel
 5 x 7 inches
 2020

WILLIAM POWHIDA

POSSIBILITIES FOR REPRESENTATION

2021 - ELECTION RESULTS
AND AFTERMATH

Far Right ——— Centrism
Billionaire ——— Liberalism
Conservatism ——— Far Left



Joe Biden (U.S. President, Democrat)
Watercolor on paper mounted on panel
8 x 10 inches
2021



Capitol Insurrection (White Supremacy)
Watercolor and gouache on paper mounted on panel
14 x 11 inches
2021



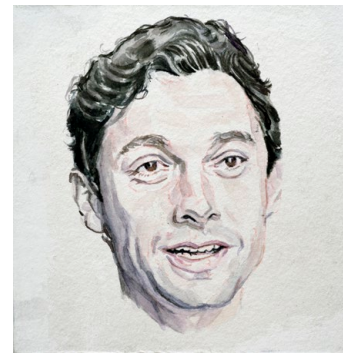
Amy Coney Barrett
(Supreme Court Justice, Religious Conservative)
Watercolor on paper mounted on panel
5 x 7 inches
2020



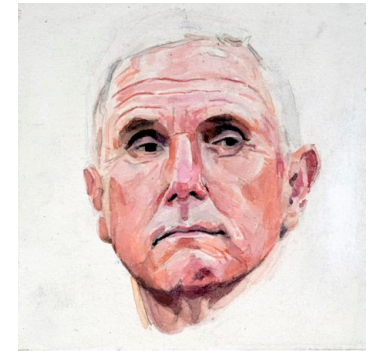
Stacey Abrams (Democrat, political activist)
Watercolor on paper mounted on panel
5 x 7 inches
2020



Raphael Warnock (GA D-Senator)
Watercolor on paper mounted on panel
5 x 5 inches
2020



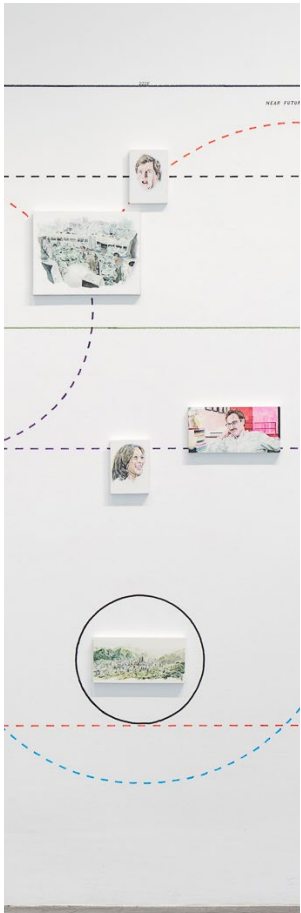
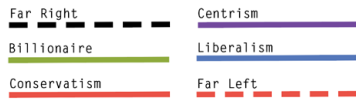
Jon Ossoff (GA D-Senator)
Watercolor on paper mounted on panel
5 x 5 inches
2020



Mike Pence (Vice President, Republican)
Watercolor and gouache on paper mounted on panel
5 x 5 inches
2020

WILLIAM POWHIDA POSSIBILITIES FOR REPRESENTATION

NEAR FUTURE



Children of Men
(Civil Conflict)
Watercolor on paper
mounted on panel
14 x 11 inches
2020

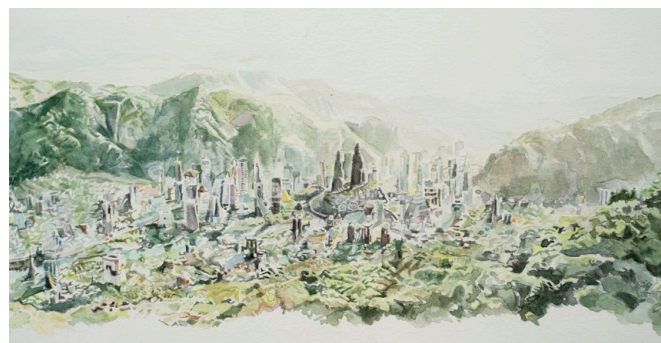


Tucker Carlson
(Racist conservative)
Watercolor on paper
mounted on panel
5 x 7 inches
2020

Kamala Harris
(Democratic Vice
President)
Watercolor on paper
mounted on panel
5 x 7 inches
2021



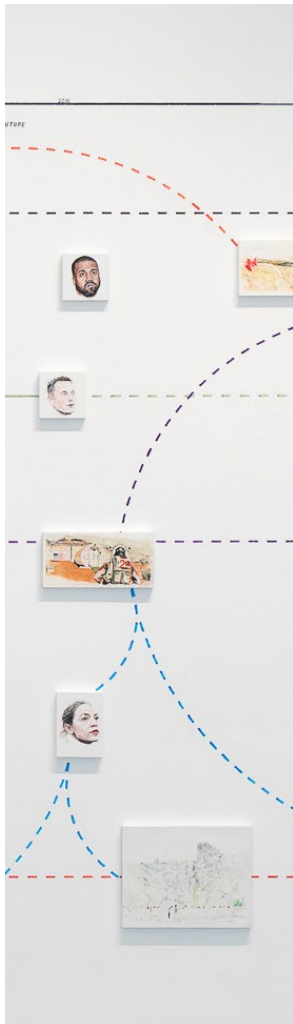
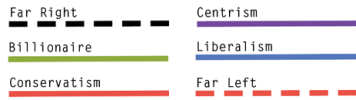
Her (Artificial
Intelligence)
Watercolor and
gouache on paper
mounted on panel
12 x 6 inches
2021



The Black Panther
(Corporate Utopian Imaginary)
Watercolor on paper
mounted on panel
12 x 6 inches
2021

WILLIAM POWHIDA POSSIBILITIES FOR REPRESENTATION

NEAR FUTURE



Elon Musk
(Billionaire, disruptor)
Watercolor on paper
mounted on panel
5 x 5 inches
2021



Kanye West (Celebrity
Third-Party Candidate)
Watercolor on paper
mounted on panel
5 x 5 inches
2020



The Martian
(Science)
Watercolor on paper
mounted on panel
12 x 6 inches
2021

Alexandria Ocasio-Cortez
(Democratic Socialist)
Watercolor and gouache on
paper mounted on panel
5 x 7 inches
2021

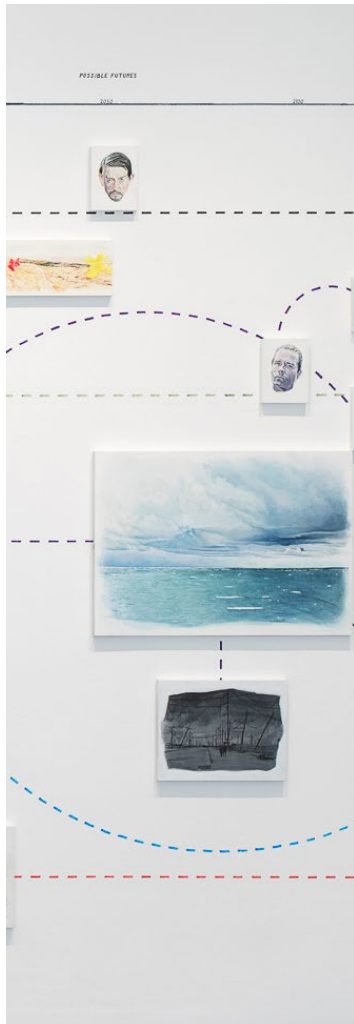
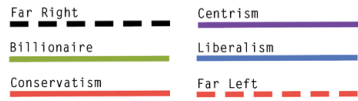


Midsommar (Collectivism)
Watercolor on paper
mounted on panel
14 x 11 inches
2020

WILLIAM POWHIDA

POSSIBILITIES FOR REPRESENTATION

POSSIBLE FUTURES



Mad Max: Fury Road
(Carbon Exhaustion
apocalypse)
Watercolor on paper
mounted on panel
12 x 6 inches
2021



John Hurt as Chancellor
Sutler (Fascism)
Watercolor and *V for
Vendetta* on paper
mounted on panel
5 x 7 inches
2021



Antarctic (Climate Collapse)
Watercolor on paper mounted on panel
28 x 20 inches
2020

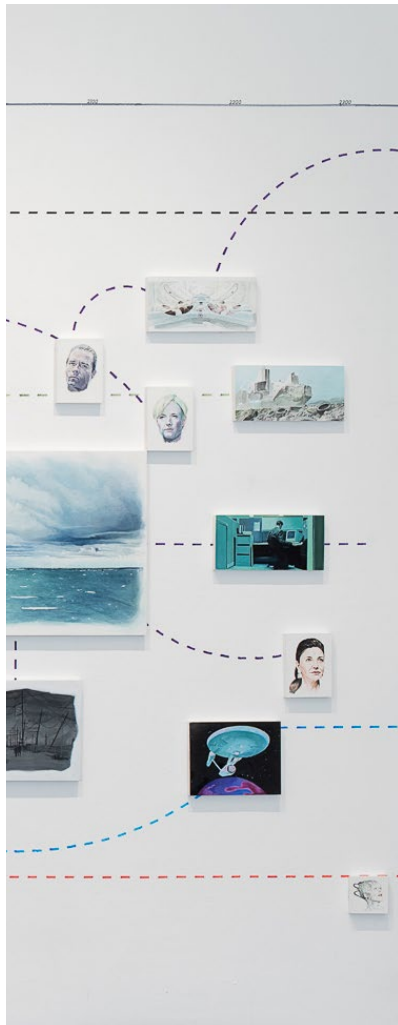
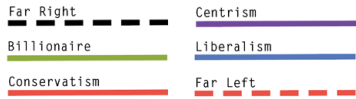


The Road (Climate Catastrophe)
Watercolor on paper mounted on panel
14 x 11 inches
2020

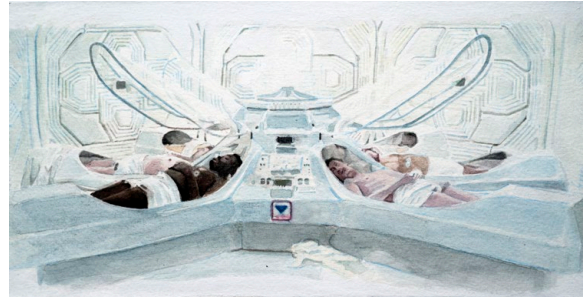
WILLIAM POWHIDA

POSSIBILITIES FOR REPRESENTATION

POSSIBLE FUTURES



Alien
(Capitalism in Space)
Watercolor on paper
mounted on panel
12 x 6 inches
2021



Guy Pierce as
Peter Weyland
(Capitalist)
Watercolor and
Prometheus on paper
mounted on panel
5 x 7 inches
2021

Jodie Foster as Def
Secretary Delacourt
(Oligarchy in space)
Watercolor and *Elysium*
on paper mounted on panel
5 x 7 inches
2021



Elysium
(Oligarchy in Space)
Watercolor and gouache
on paper mounted on
panel
12 x 6 inches
2021



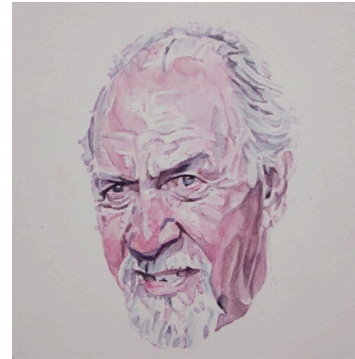
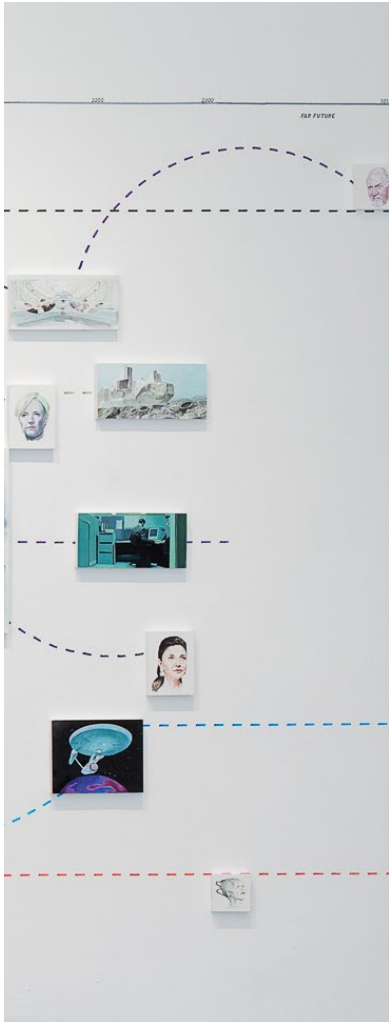
The Matrix (Simulation)
Watercolor on paper
mounted on panel
12 x 6 inches
2021

WILLIAM POWHIDA

POSSIBILITIES FOR REPRESENTATION

POSSIBLE FUTURES

Far Right Centrism
 Billionaire Liberalism
 Conservatism Far Left



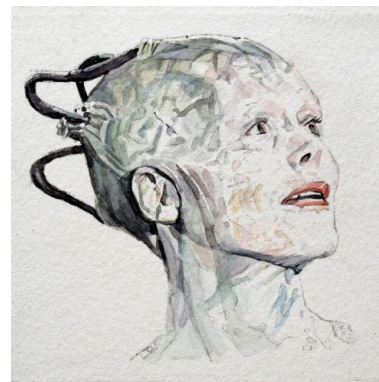
Jose Ferrer as Emperor
 Shaddam Corrino IV
 (Neofeudalism in space)
 Watercolor and *Dune (1986)* on
 paper mounted on panel
 5 x 5 inches
 2021



Shohreh Aghdashloo as UN
 Sec Gen Avasarala
 (Democracy in space)
 Watercolor and
The Expanse on paper
 mounted on panel
 5 x 7 inches
 2021

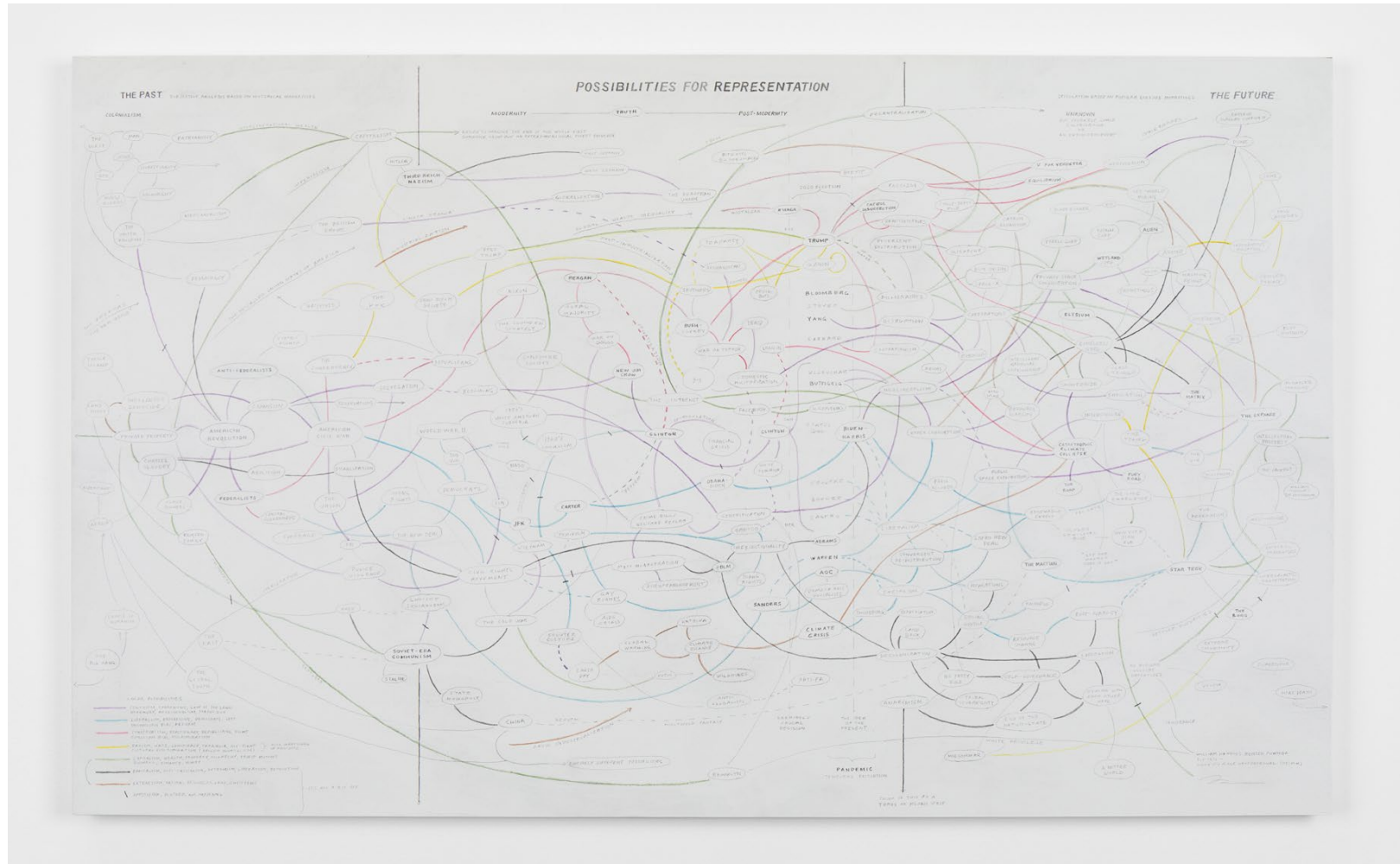


Star Trek
 (post scarcity, liberal
 utopia in space)
 Watercolor on paper
 mounted on panel
 8 x 10 inches
 2021



Alice Krige as the Borg Queen
 (Extreme Collectivity in space)
 Watercolor and *Star Trek:TNG* on
 paper mounted on panel
 4 x 4 inches
 2021

WILLIAM POWHIDA POSSIBILITIES FOR REPRESENTATION



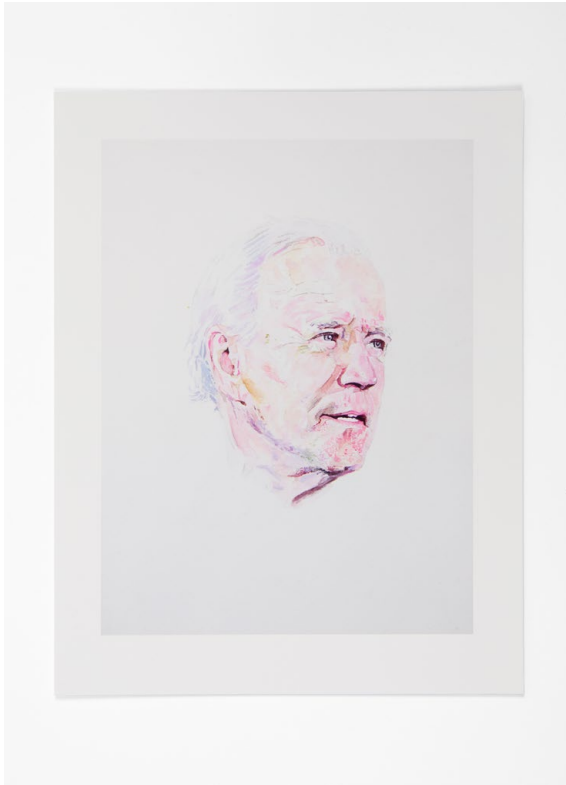
Composite Study (Possibilities for Representation)
Graphite and watercolor on panel
60 x 36 inches
2019-2021

WILLIAM POWHIDA POSSIBILITIES FOR REPRESENTATION

POSSIBILITIES FOR REPRESENTATION - THE REFERENDUM EDITION

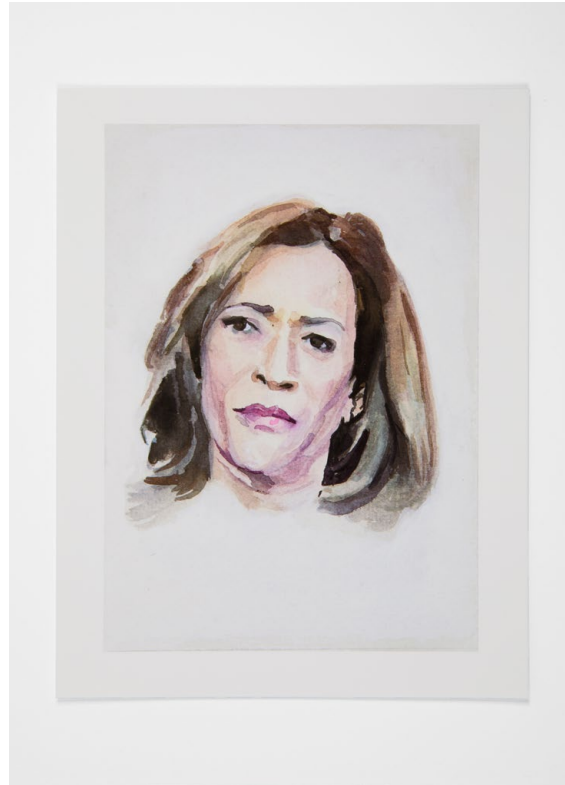
In the rear gallery Powhida has presented an interactive installation of thirteen archival pigment prints, each one a Powhida rendering of historical and contemporary political leaders that we invite show-goers to “vote” on - with their money. Edition sizes per piece will be declared at the conclusion of the show as a function of how many pieces are sold from each edition. Proud Biden voter? Buy a bunch, give them to friends. Still think Bernie would have won? Festoon the office with his image. Yearn for a return to the days of JFK, Jimmy Carter, or Bill Clinton? The referendum will register your loyalty as a function of your spending. We even present a slew of progressive candidates who may in the future run for President - pick your horse now!

WILLIAM POWHIDA
POSSIBILITIES FOR REPRESENTATION



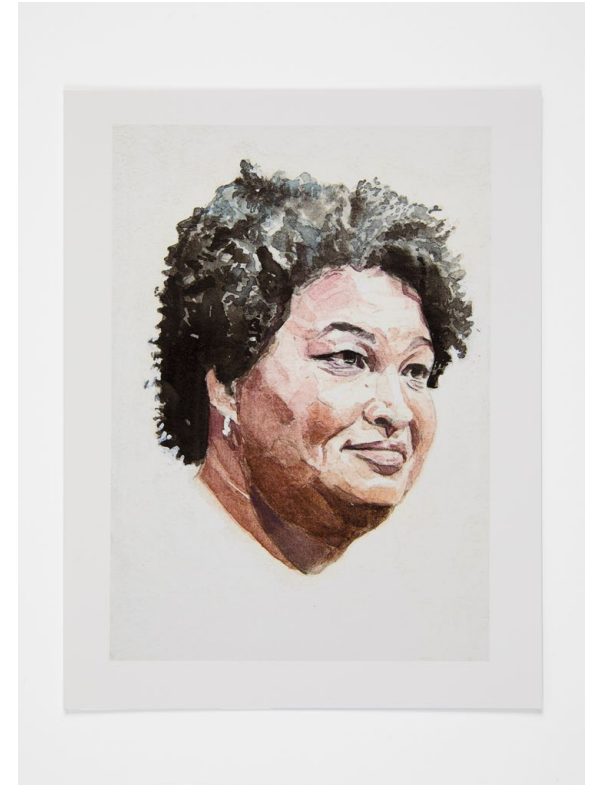
Joe Biden (Democrat)
Archival pigment print
8.5 x 11 inches
Open Edition
2021

[Link to Purchase](#)



Kamala Harris (Democrat)
Archival pigment print
8.5 x 11 inches
Open Edition
2021

[Link to Purchase](#)



Stacey Abrams (Democrat,
political activist)
Archival pigment print
8.5 x 11 inches
Open Edition
2021

[Link to Purchase](#)

WILLIAM POWHIDA
POSSIBILITIES FOR REPRESENTATION



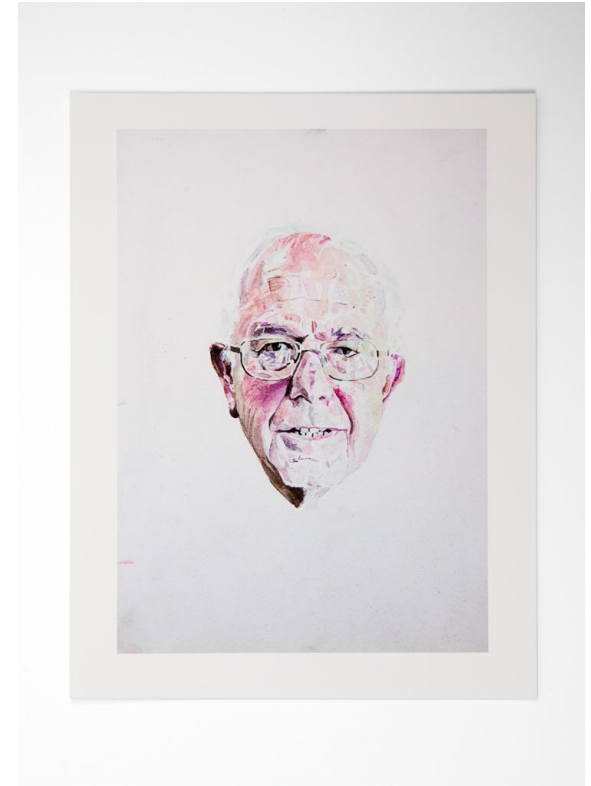
(Alexandria Ocasio-Cortez
(Democratic Socialist)
Archival pigment print
8.5 x 11 inches
Open Edition
2021

[Link to Purchase](#)



Elizabeth Warren (Democrat)
Archival pigment print
8.5 x 11 inches
Open Edition
2021

[Link to Purchase](#)



Bernie Sanders
(Democratic Socialist)
Archival pigment print
8.5 x 11 inches
Open Edition
2021

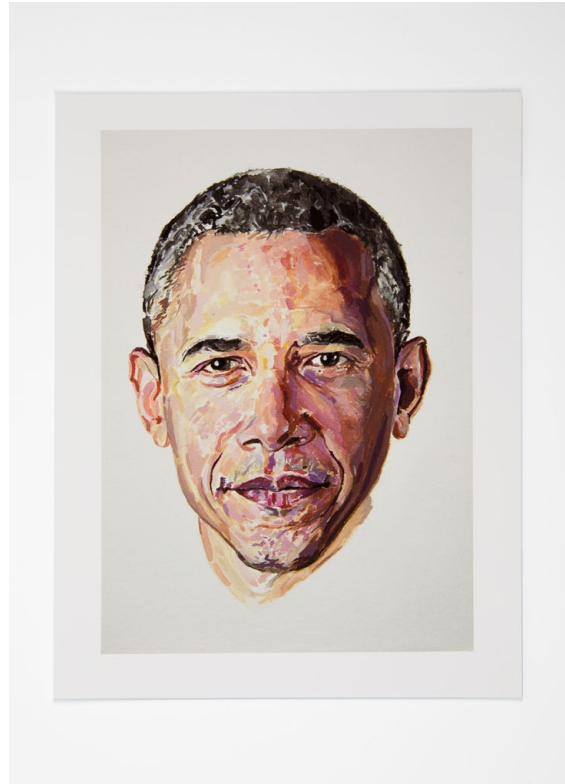
[Link to Purchase](#)

WILLIAM POWHIDA POSSIBILITIES FOR REPRESENTATION



Trump (Former US
president, loser)
Archival pigment print
8.5 x 11 inches
Open Edition
2021

[Link to Purchase](#)



Barack Obama (Democrat)
Archival pigment print
8.5 x 11 inches
Open Edition
2021

[Link to Purchase](#)



Hillary Clinton
(Democrat)
Archival pigment print
8.5 x 11 inches
Open Edition
2021

[Link to Purchase](#)

WILLIAM POWHIDA POSSIBILITIES FOR REPRESENTATION



Andrew Yang (Democrat,
Disruptor)
Archival pigment print
8.5 x 11 inches
Open Edition
2021

[Link to Purchase](#)



Jimmy Carter (Democrat)
Archival pigment print
8.5 x 11 inches
Open Edition
2021

[Link to Purchase](#)



Bill Clinton (Democrat)
Archival pigment print
8.5 x 11 inches
Open Edition
2021

[Link to Purchase](#)



John F. Kennedy
(Democrat)
Archival pigment print
8.5 x 11 inches
Open Edition
2021

[Link to Purchase](#)

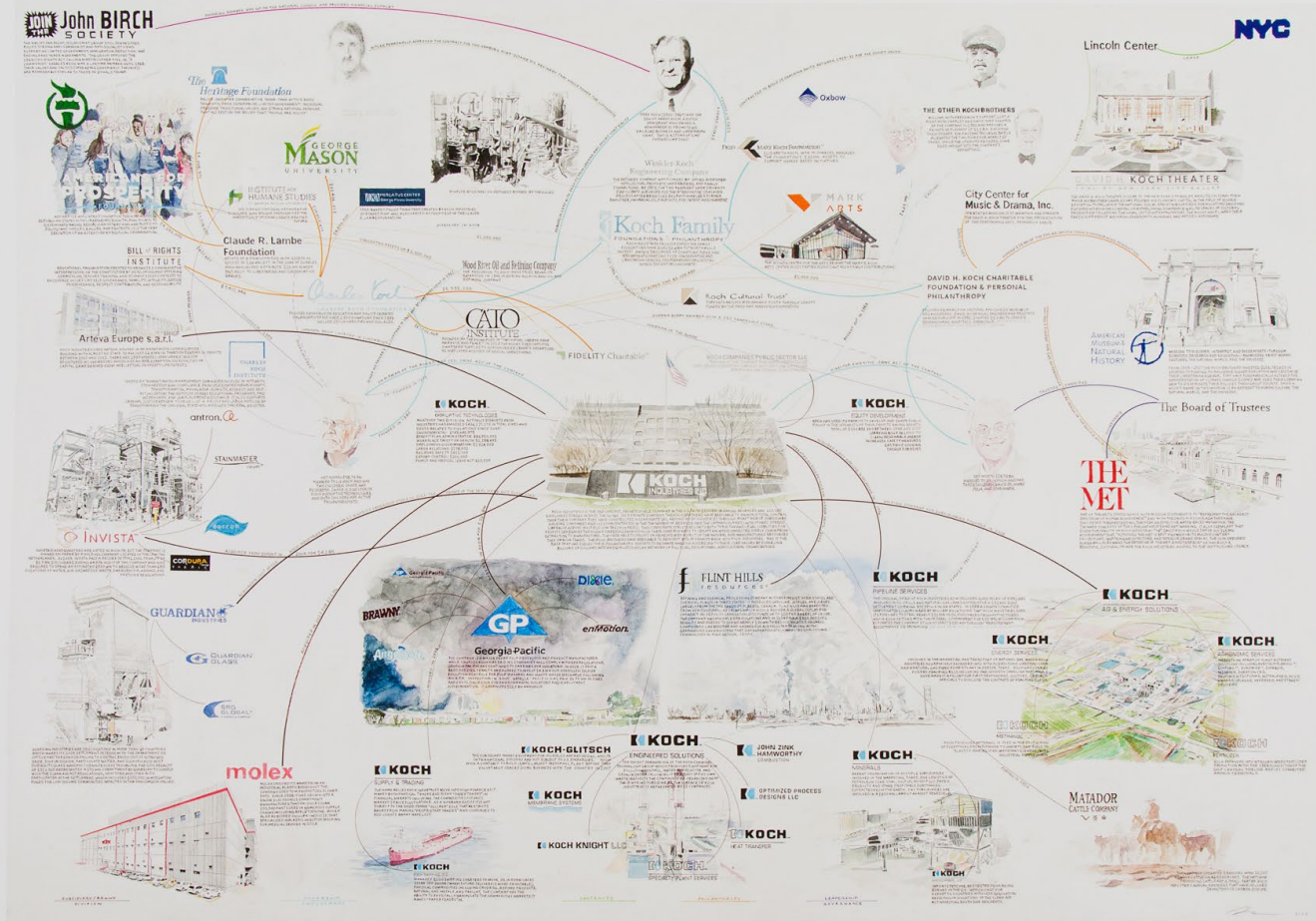
WILLIAM POWHIDA

POSSIBILITIES FOR REPRESENTATION

THE FAMILY TREES

Also included in the exhibition are reproductions of two of Powhida's previous works from his 2019 exhibition, *Complicities*, at Postmasters Gallery in NY. The two prints, *Koch Industries and the Sackler Family Tree*, are representative of a less subjective, more rigorous approach to reporting on the connections between capital and culture. The exhaustive research and detail of these works provide another way of thinking about the role art can play in society, while the larger installation takes a step back to examine the dichotomies, parallels, and roles individuals play in the cultural narratives that shape our understanding of society.

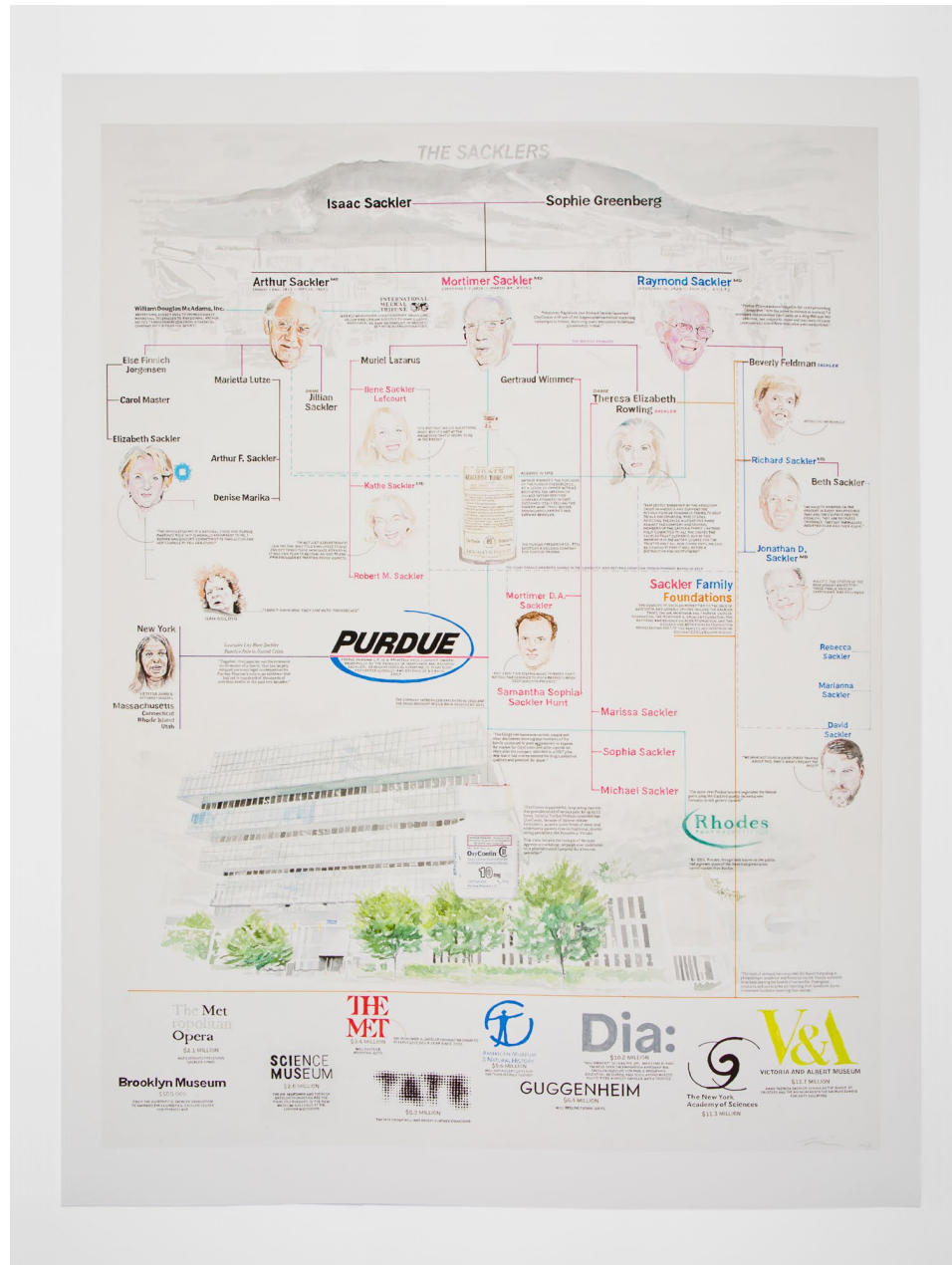
WILLIAM POWHIDA POSSIBILITIES FOR REPRESENTATION



Koch Industries
(Private Company)
Archival pigment print
48 x 36 inches
Edition of 3
2021

[Link to Purchase](#)

WILLIAM POWHIDA POSSIBILITIES FOR REPRESENTATION



The Sacklers
(Family Tree)
Archival pigment print
36 x 48 inches
Edition of 3
2021

[Link to Purchase](#)

WILLIAM POWHIDA

POSSIBILITIES FOR REPRESENTATION

William Powhida (b. 1976 NY) earned his BFA from Syracuse University and his MFA from Hunter College, NY. He has exhibited nationally and internationally in New York, Los Angeles, Seattle, London, Madrid, Miami, Chicago, Copenhagen, Mexico City, Dublin and other locales. His work has been discussed in a wide range of publication including The New York Times, Artforum, Art in America, The Brooklyn Rail, Art News, Art Info, Artnet, Hyperallergic, and others. Residencies include The Lower East Side Printshop, the John Michael Kohler Art Center, the Headlands Center for the Arts, and Casa Maauad in Mexico City. Powhida's work resides in the permanent collections of the Whitney Museum of American Art, the Henry Art Gallery Seattle, the Museum of Contemporary Art San Diego, the Orange County Museum, the Crocker Art Museum, the 21c Museum, and the JP Morgan & Chase Collection, among others. He is represented in NY by Postmasters Gallery and in Los Angeles by Charlie James Gallery. He lives and works in Brooklyn, NY.