

WILLIAM POWHIDA  
POSSIBILITIES FOR REPRESENTATION



# WILLIAM POWHIDA

## POSSIBILITIES FOR REPRESENTATION

### POSSIBILITIES FOR REPRESENTATION - THE INSTALLATION

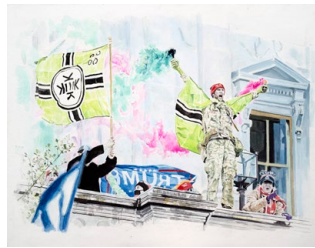
In this show, imported directly from the Aldrich Contemporary Art Museum in Ridgefield, CT, William Powhida deconstructs the history of America as a “settler-colonial project,” a paradigm which has imprinted structures of white supremacy and “racial capitalism” on the DNA of the country, original sins the country is battling to overcome to this day.

In a massive timeline installation covering two of the three walls in the gallery’s main chamber, Powhida traces the history of the country along distinct political lines from the Colonial days to the present and to the future. The *centrist line* (purple) runs through the middle of the installation, but sometimes shifts directionally with the political climate; the *progressive line* (blue) runs below the centrist line and flows in arcs following shifts in the Democratic Party and the evolution of Democratic Socialism, while the *conservative line* (red) runs above the centrist line and traces the march rightward of the Republican Party. Leftward tendencies intensify as we move down the wall towards the dotted red line denoting *left wing extremism*, while movement up the wall towards the dotted black line points to *right wing extremism*. The *green line is the money line, the billionaire line*.

All of these lines and their progressions along the timeline are marked with corresponding portraits of political leaders and emblematic historical scenes beautifully executed on panel in gouache and watercolor by Powhida. The lines move through the present, where Powhida unpacks the 2020 election and its aftermath in great detail before giving way to a series of speculative futures - each tied to one of the political through-lines. To illustrate these various possible future(s), Powhida has created paintings of well-known film and literary narratives that show the possible culmination of each political line. What will decades of ongoing Centrism beget? What does the world look like after a drift into right or left wing extremism? A world run by billionaires? An embrace of progressive politics?? This show offers an array of possible outcomes for our consideration.



Far From Heaven (Nostalgia)

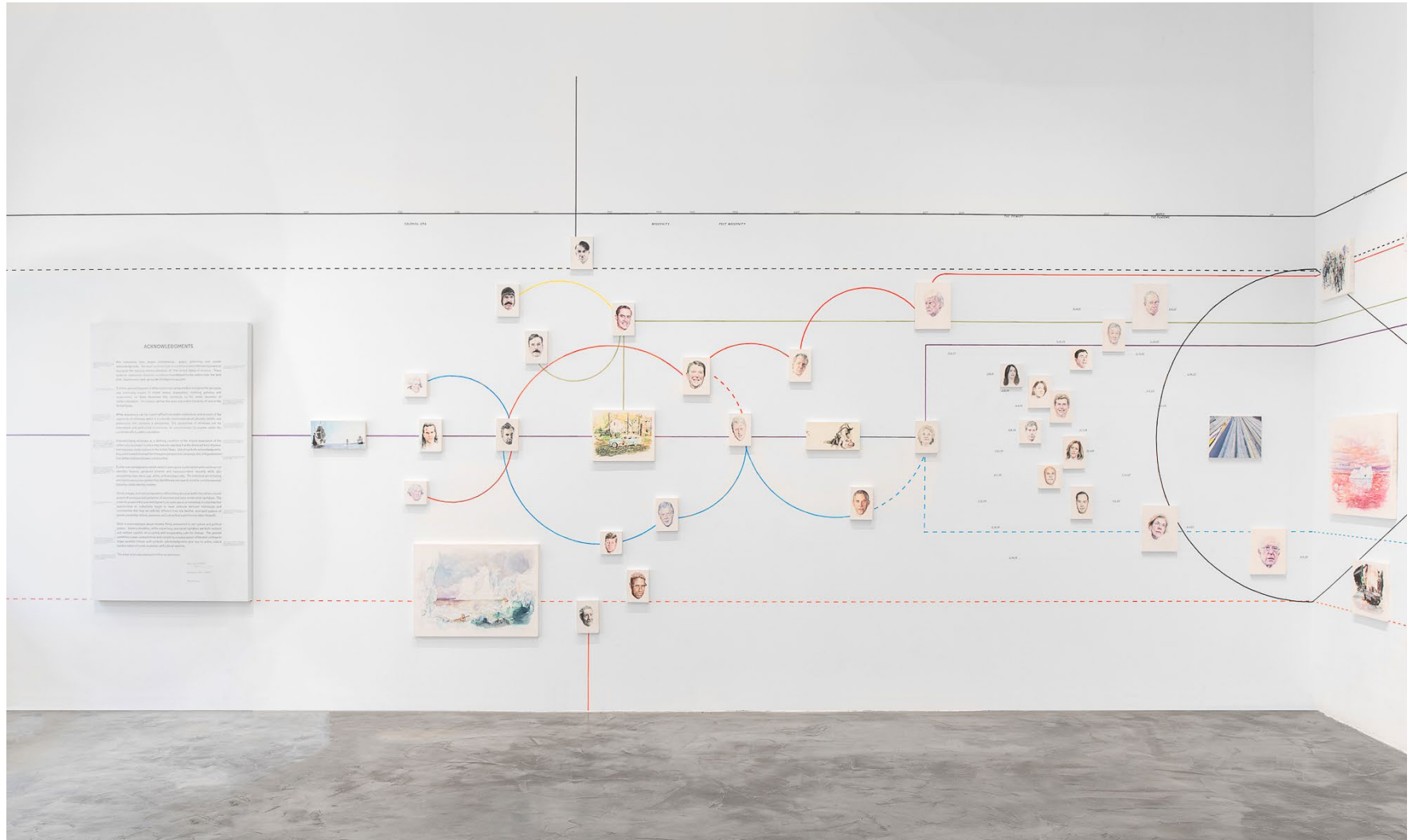


Capitol Insurrection  
(White Supremacy)



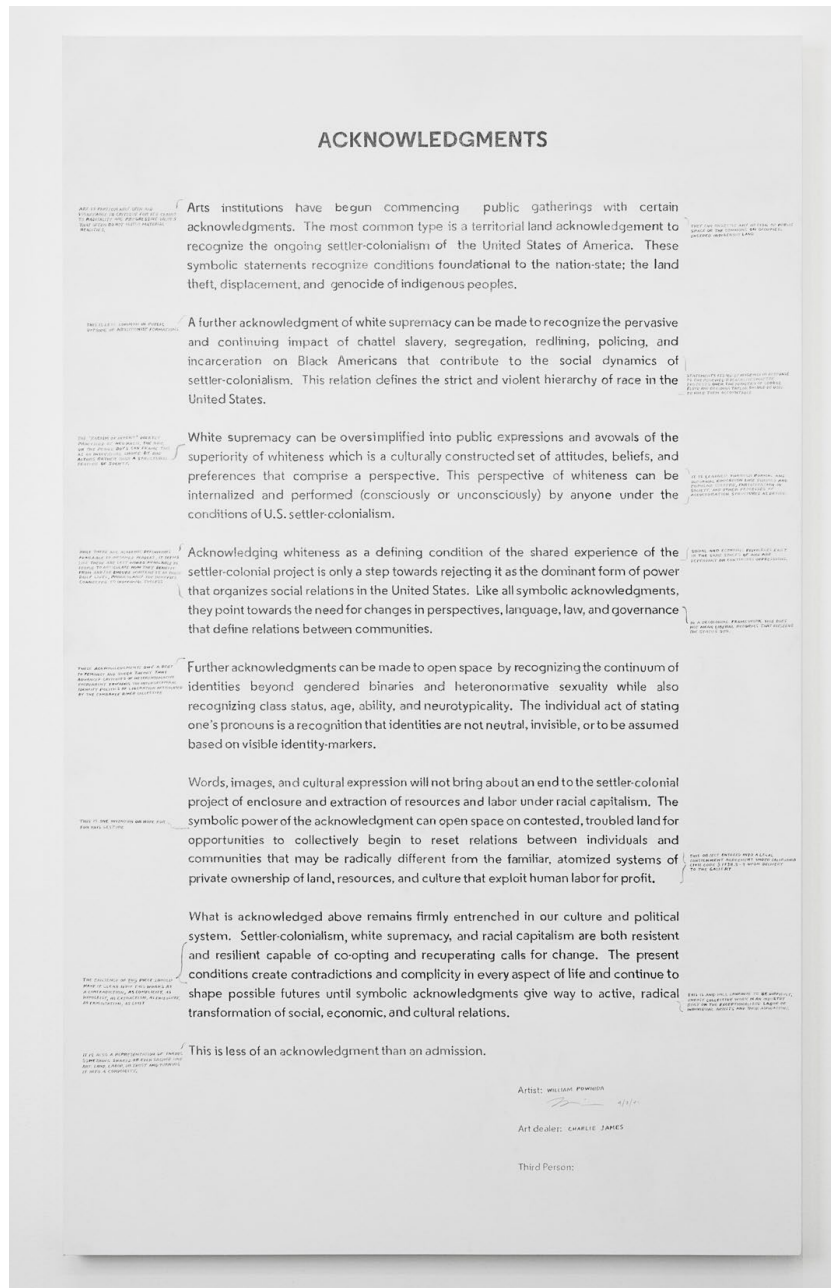
The Road (Climate Catastrophe)

# WILLIAM POWHIDA POSSIBILITIES FOR REPRESENTATION



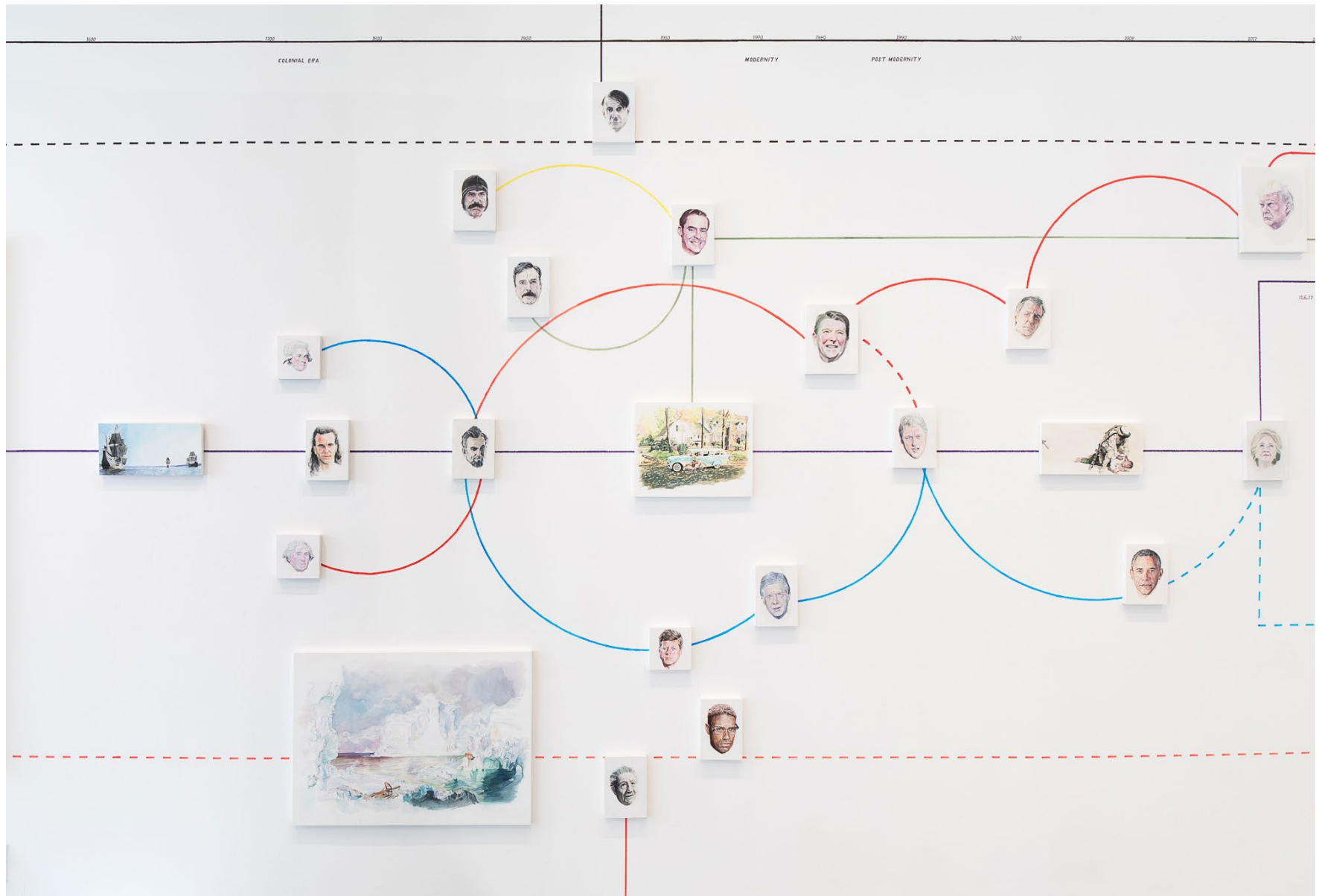
# WILLIAM POWHIDA

## POSSIBILITIES FOR REPRESENTATION



Acknowledgments  
Graphite and  
watercolor on panel  
36 x 60 inches  
2021

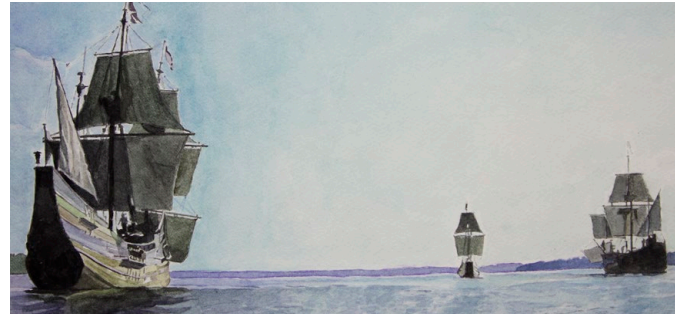
# WILLIAM POWHIDA POSSIBILITIES FOR REPRESENTATION



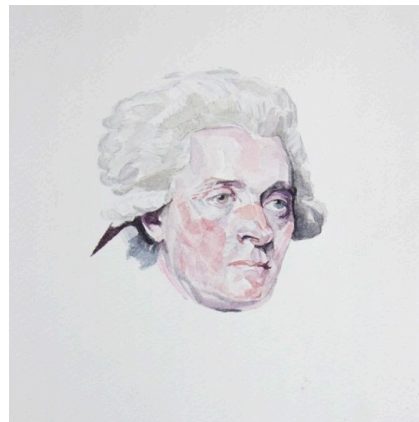
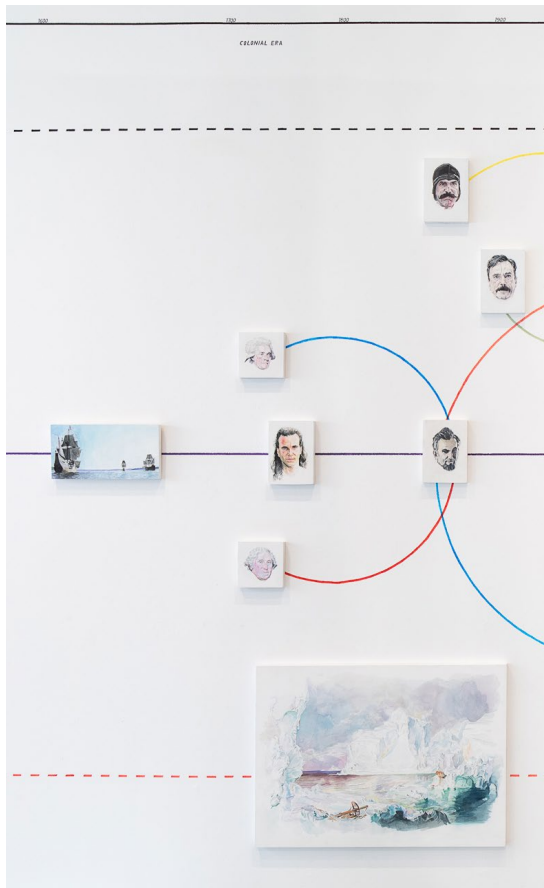
# WILLIAM POWHIDA POSSIBILITIES FOR REPRESENTATION

## COLONIAL ERA

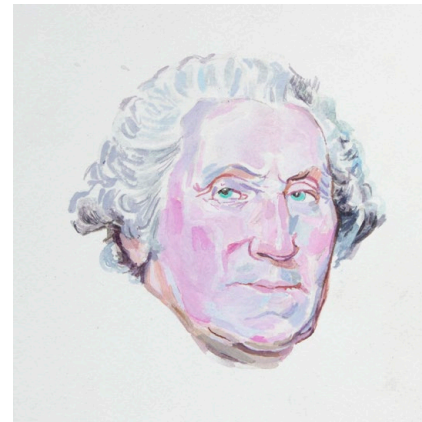
Far Right ——— Centrism ———  
 Billionaire ——— Liberalism ———  
 Conservatism ——— Far Left ———



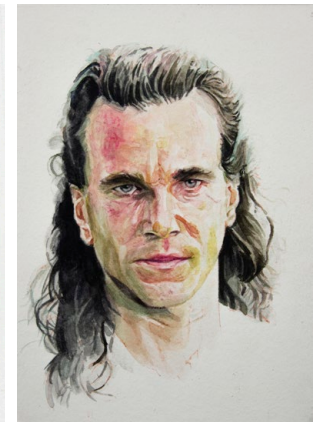
The New World (indigenous genocide)  
 Watercolor on paper mounted on panel  
 12 x 6 inches  
 2021



Thomas Jefferson  
 (Anti-Federalist)  
 Watercolor and gouache  
 on paper mounted on panel  
 5 x 5 inches  
 2020



George Washington  
 (Federalist)  
 Watercolor and gouache  
 on paper mounted on panel  
 5 x 5 inches  
 2020









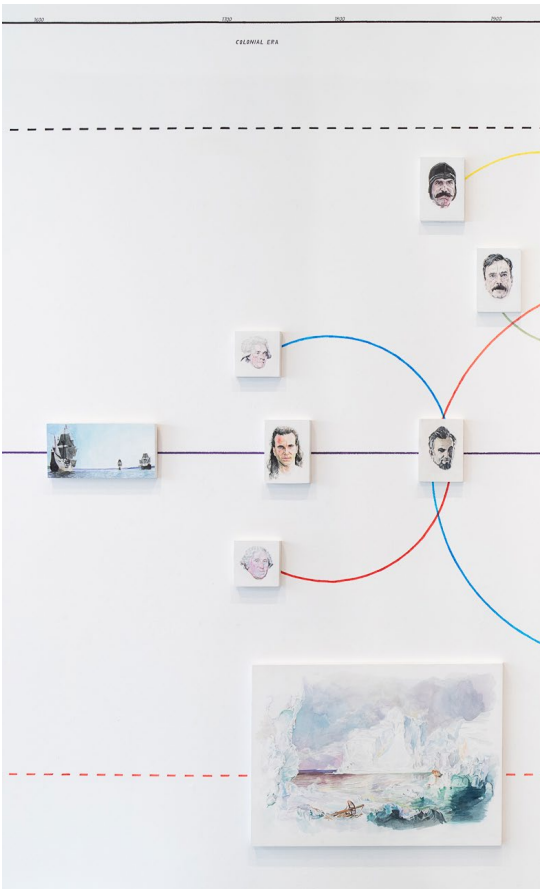
Daniel Day-Lewis as Hawkeye  
 (Settler adoption fantasy)  
 Watercolor and *Last of the  
 Mohicans* on paper mounted on panel  
 5 x 7 inches  
 2021

# WILLIAM POWHIDA

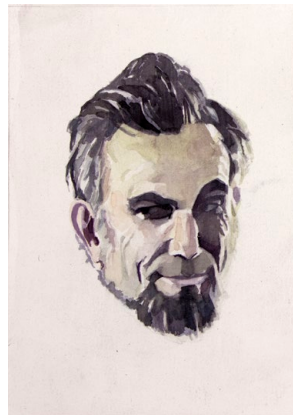
## POSSIBILITIES FOR REPRESENTATION

1800-1900

Far Right  Centrism   
 Billionaire  Liberalism   
 Conservatism  Far Left 



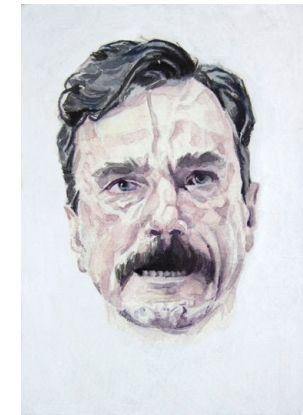
The Icebergs by Frederic Edwin Church, 1861 (Romanticism)  
 Watercolor on paper mounted on panel  
 28 x 20 inches  
 2020



Daniel Day-Lewis as Abraham Lincoln (Republican)  
 Watercolor and *Lincoln* on paper mounted on panel  
 5 x 7 inches  
 2020



Daniel Day-Lewis as William Poole/Bill "The Butcher" (Nativist)  
 Watercolor and *Gangs of New York* on paper mounted on panel  
 5 x 7 inches  
 2020

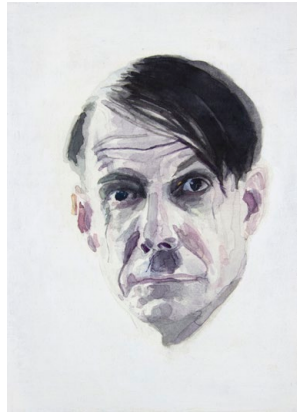
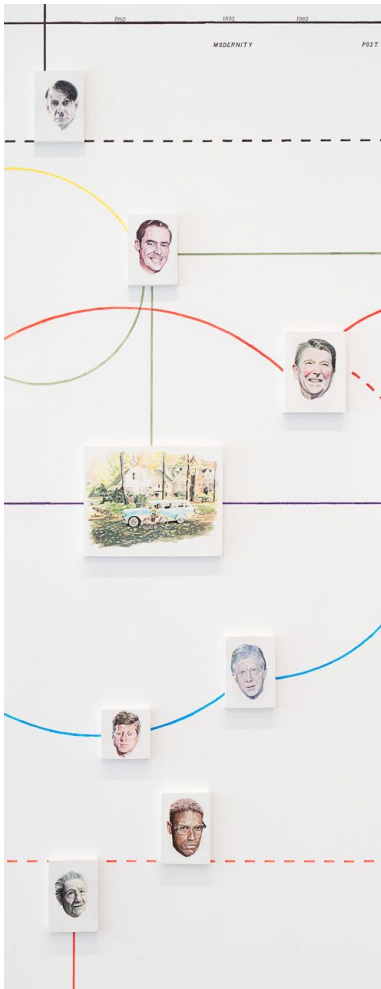
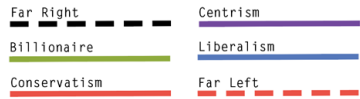


Daniel Day-Lewis as Daniel Plainview (Fictional Capitalist)  
 Watercolor and *There Will be Blood* on paper mounted on panel  
 5 x 7 inches  
 2020

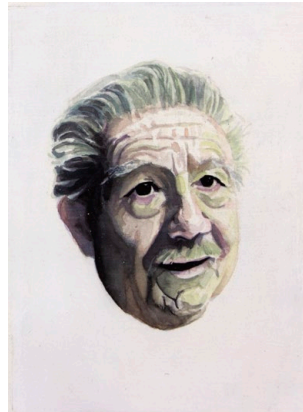
# WILLIAM POWHIDA

## POSSIBILITIES FOR REPRESENTATION

### MODERNITY



Noah Taylor as Hitler (Nazi)  
Watercolor and Max on paper mounted on panel  
5 x 7 inches  
2020



Adrian McLoughlin as Joseph Stalin (Stalinist)  
Watercolor and *The Death of Stalin* on paper mounted on panel  
5 x 7 inches  
2020



John F. Kennedy (Democrat)  
Watercolor on paper mounted on panel  
5 x 5 inches  
2021



Far From Heaven (Nostalgia)  
Watercolor and gouache on paper mounted on panel  
14 x 11 inches  
2021

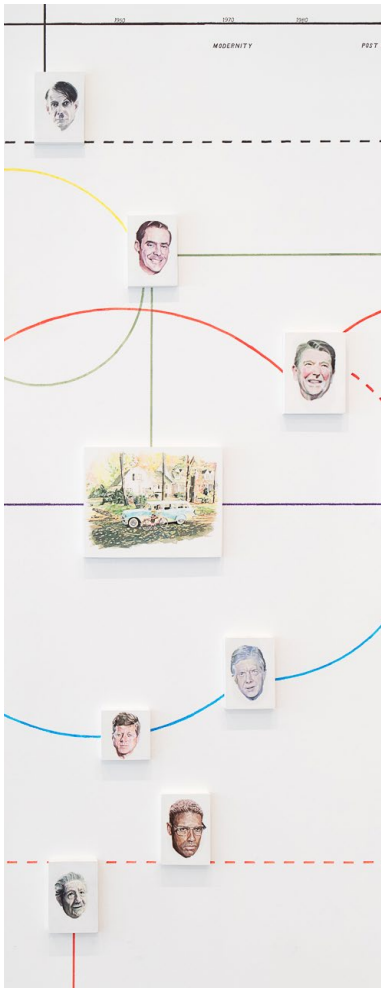


# WILLIAM POWHIDA

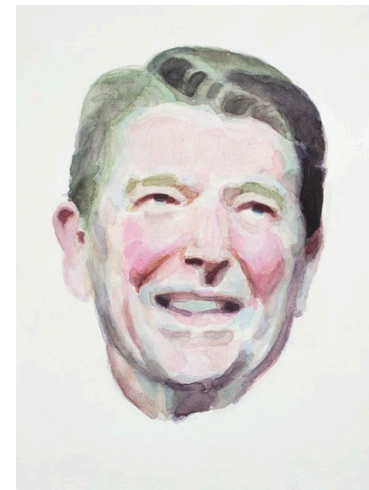
## POSSIBILITIES FOR REPRESENTATION

### MODERNITY

Far Right     Centrism   
 Billionaire     Liberalism   
 Conservatism     Far Left



Fred Trump  
 (Real Estate, KKK)  
 Watercolor on paper  
 mounted on panel  
 5 x 7 inches  
 2020



Ronald Reagan  
 (Actor, Republican)  
 Watercolor on paper  
 mounted on panel  
 6 x 8 inches  
 2020



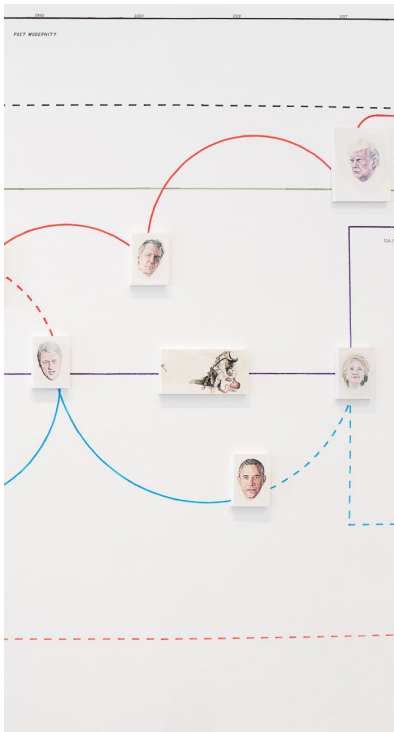
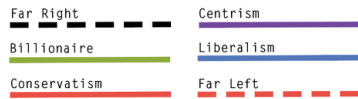
Denzel Washington  
 as Malcolm-X  
 (Black nationalist)  
 Watercolor and  
*Malcolm-X* on paper  
 mounted on panel  
 5 x 7 inches  
 2021



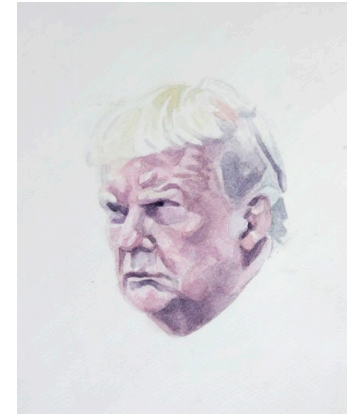
Jimmy Carter (Democrat)  
 Watercolor and  
 gouache on paper  
 mounted on panel  
 5 x 7 inches  
 2021

# WILLIAM POWHIDA POSSIBILITIES FOR REPRESENTATION

## POST MODERNITY



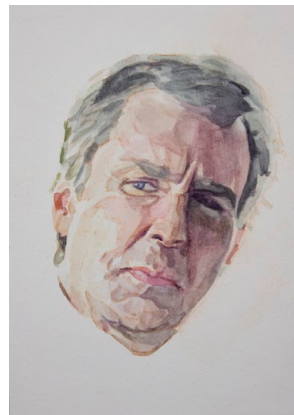
**The Green Zone**  
(U.S. Imperialism)  
Watercolor on paper  
mounted on panel  
12 x 6 inches  
2021



**Donald Trump** (Republican  
Presidential, Incumbent)  
Watercolor on paper mounted  
on panel  
8 x 10 inches  
2020



**Bill Clinton** (Democrat)  
Watercolor on paper  
mounted on panel  
5 x 7 inches  
2021



**Sam Rockwell as**  
**George W. Bush**  
(Republican, war criminal)  
Watercolor and *Vice*  
on paper mounted on panel  
5 x 7 inches  
2021

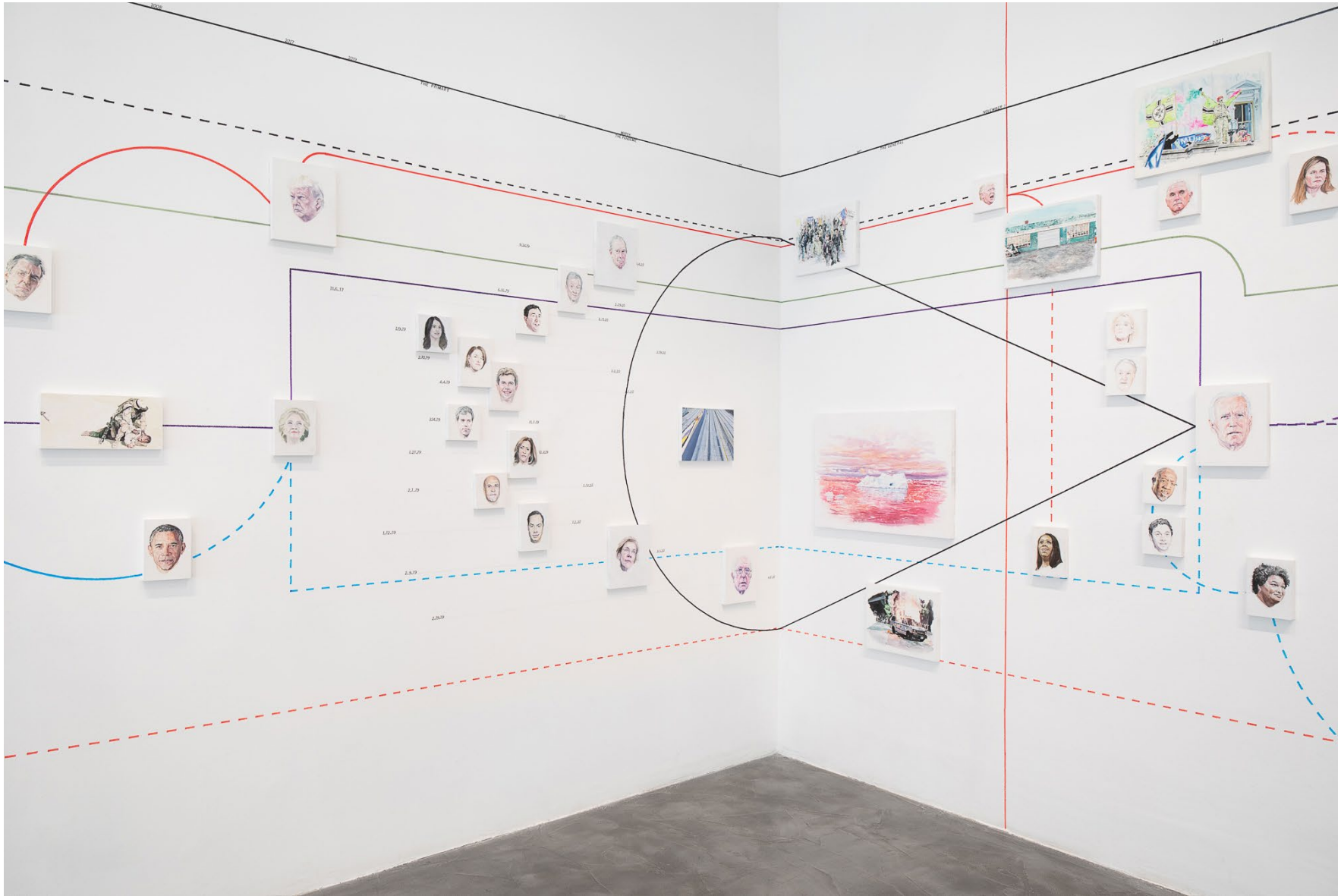


**Barack Obama** (Democrat)  
Watercolor and gouache  
on paper mounted on panel  
5 x 7 inches  
2021



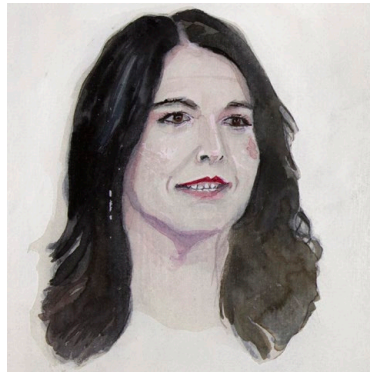
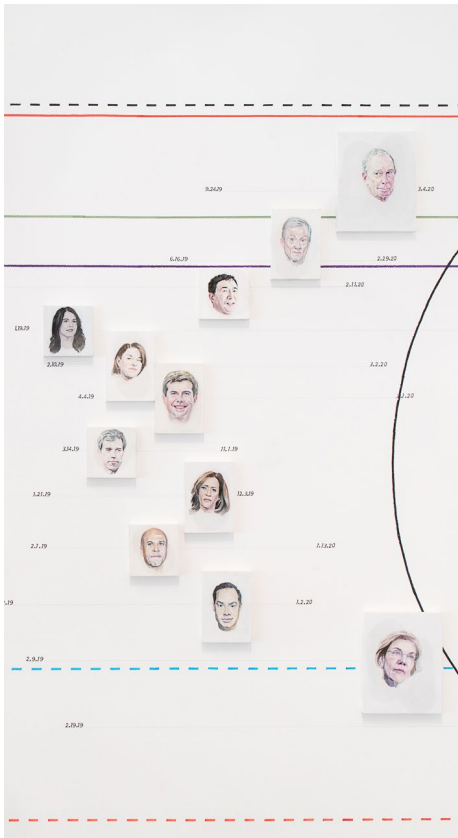
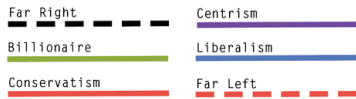
**Hillary Clinton** (Democrat)  
Watercolor on paper  
mounted on panel  
5 x 7 inches  
2020

# WILLIAM POWHIDA POSSIBILITIES FOR REPRESENTATION

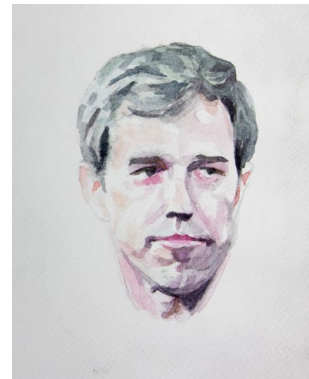


# WILLIAM POWHIDA POSSIBILITIES FOR REPRESENTATION

## THE PRIMARY



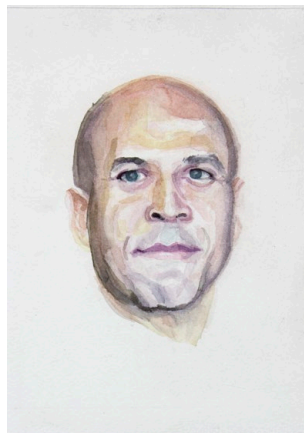
**Tulsi Gabbard**  
 (Democrat?)  
 Watercolor on paper  
 mounted on panel  
 5 x 5 inches  
 2020



**Beto O'Rourke**  
 (Democrat)  
 Watercolor on paper  
 mounted on panel  
 5 x 5 inches  
 2020



**Amy Klobuchar**  
 (Democrat)  
 Watercolor on paper  
 mounted on panel  
 5 x 7 inches  
 2020



**Cory Booker** (Democrat)  
 Watercolor on paper  
 mounted on panel  
 5 x 5 inches  
 2020



**Pete Buttigieg**  
 (Democrat)  
 Watercolor on paper  
 mounted on panel  
 5 x 7 inches  
 2020





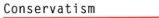



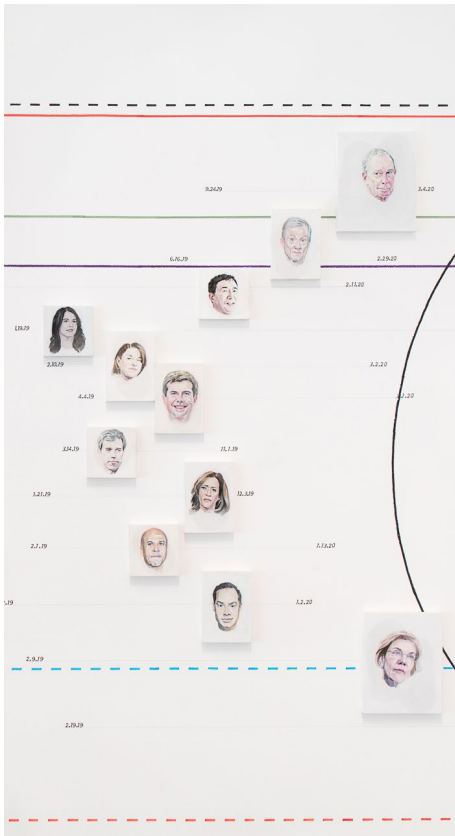
**Kamala Harris**  
 (Democrat)  
 Watercolor on paper  
 mounted on panel  
 5 x 7 inches  
 2020

# WILLIAM POWHIDA

## POSSIBILITIES FOR REPRESENTATION

### THE PRIMARY

**Far Right**  **Centrism**   
**Billionaire**  **Liberalism**   
**Conservatism**  **Far Left** 



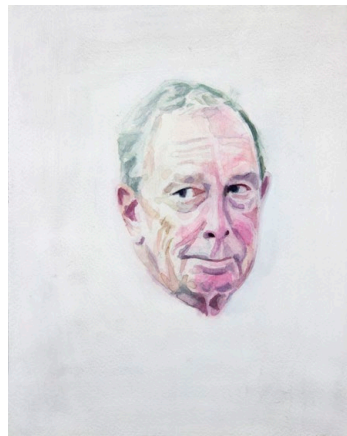
**Julián Castro (Democrat)**  
 Watercolor on paper  
 mounted on panel  
 5 x 7 inches  
 2020



**Andrew Yang (Democrat, Disruptor)**  
 Watercolor on paper mounted on panel  
 5 x 5 inches  
 2020



**Tom Steyer (Capitalist)**  
 Watercolor on paper  
 mounted on panel  
 5 x 7 inches  
 2020



**Michael Bloomberg (Capitalist)**  
 Watercolor on paper  
 mounted on panel  
 8 x 10 inches  
 2020



**Elizabeth Warren (Democrat)**  
 Watercolor on paper  
 mounted on panel  
 8 x 10 inches  
 2020

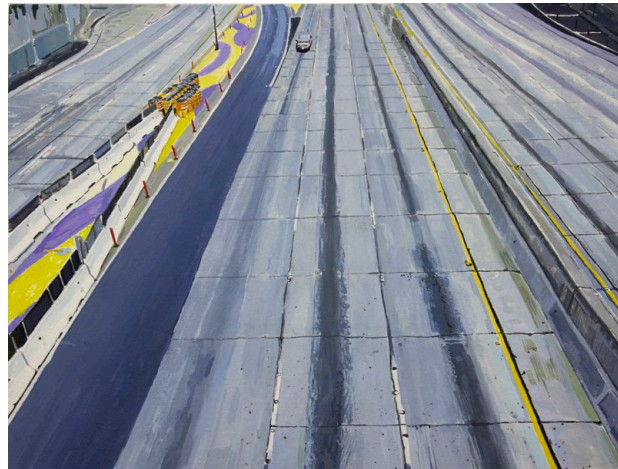


**Bernie Sanders (Democratic Socialist)**  
 Watercolor on paper  
 mounted on panel  
 8 x 10 inches  
 2021

# WILLIAM POWHIDA POSSIBILITIES FOR REPRESENTATION

## THE PANDEMIC

Far Right	Centrism
Billionaire	Liberalism
Conservatism	Far Left



Pandemic (Los Angeles)  
Watercolor on paper mounted on panel  
12 x 9 inches  
2021



Wisconsin Protests (White Supremacy/Boogaloo)  
Watercolor on paper mounted on panel  
14 x 11 inches  
2020



Antarctica (Realism)  
Watercolor on paper mounted on panel  
28 x 20 inches  
2020



George Floyd Protest (Decolonization)  
Watercolor on paper mounted on panel  
14 x 11 inches  
2020

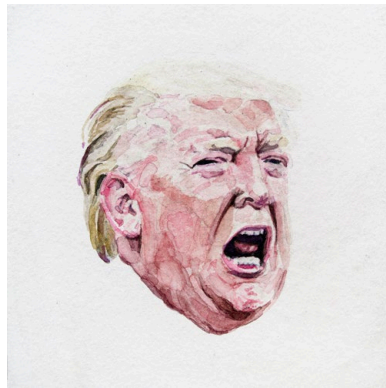
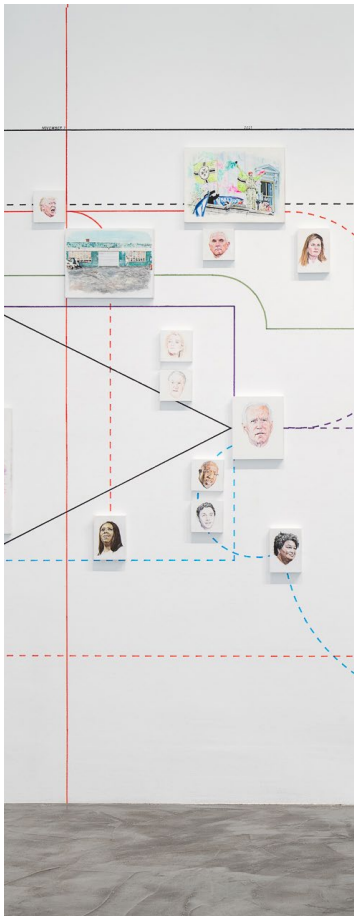
# WILLIAM POWHIDA POSSIBILITIES FOR REPRESENTATION



# WILLIAM POWHIDA POSSIBILITIES FOR REPRESENTATION

## THE 2020 ELECTION

Far Right ——— Centrist  
 Billionaire ——— Liberalism  
 Conservatism ——— Far Left



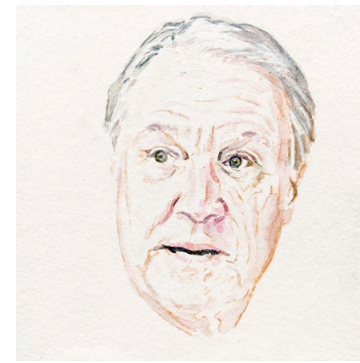
Trump (Former US president, loser)  
 Watercolor on paper  
 mounted on panel  
 5 x 5 inches  
 2020



Four Seasons  
 Total Landscaping  
 (Terminal loss)  
 Watercolor on paper  
 mounted on panel  
 14 x 11 inches  
 2020



Kelly Loeffler  
 (GA-Republican, loser)  
 Watercolor on paper  
 mounted on panel  
 5 x 5 inches  
 2020



David Perdue  
 (GA-Republican, loser)  
 Watercolor on paper  
 mounted on panel  
 5 x 5 inches  
 2020



Letitia James  
 (NYS Attorney General, Justice)  
 Watercolor on paper  
 mounted on panel  
 5 x 7 inches  
 2020

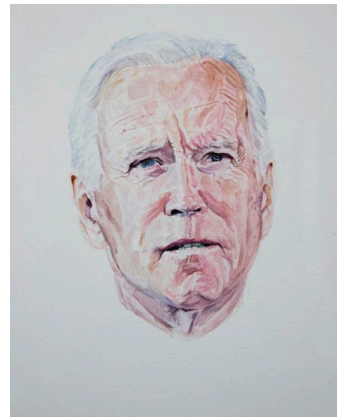
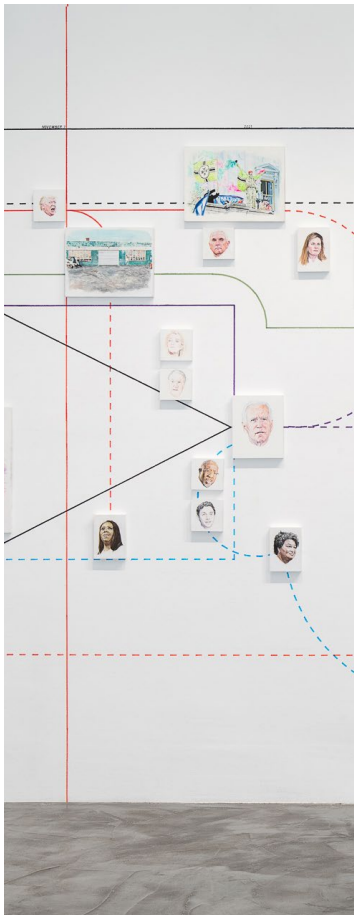


# WILLIAM POWHIDA

## POSSIBILITIES FOR REPRESENTATION

2021 - ELECTION RESULTS  
AND AFTERMATH

Far Right ——— Centrist  
Billionaire ——— Liberalism  
Conservatism ——— Far Left



Joe Biden (U.S. President, Democrat)  
Watercolor on paper mounted on panel  
8 x 10 inches  
2021



Capitol Insurrection (White Supremacy)  
Watercolor and gouache on paper mounted on panel  
14 x 11 inches  
2021



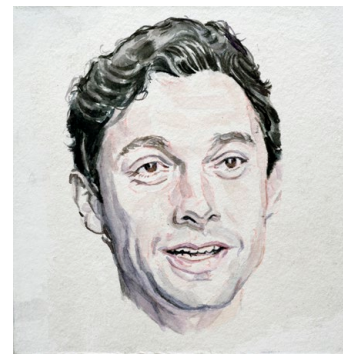
Amy Coney Barrett  
(Supreme Court Justice, Religious Conservative)  
Watercolor on paper mounted on panel  
5 x 7 inches  
2020



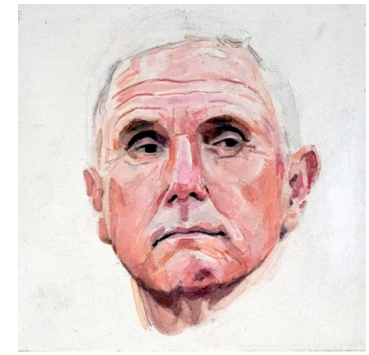
Stacey Abrams (Democrat, political activist)  
Watercolor on paper mounted on panel  
5 x 7 inches  
2020



Raphael Warnock (GA D-Senator)  
Watercolor on paper mounted on panel  
5 x 5 inches  
2020



Jon Ossoff (GA D-Senator)  
Watercolor on paper mounted on panel  
5 x 5 inches  
2020

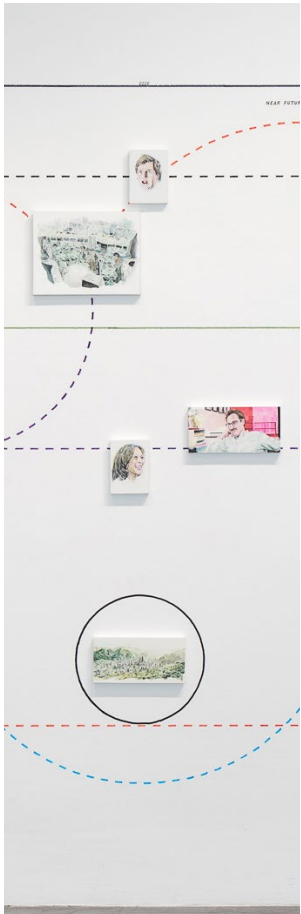
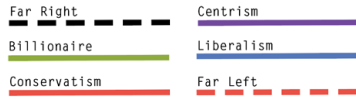


Mike Pence (Vice President, Republican)  
Watercolor and gouache on paper mounted on panel  
5 x 5 inches  
2020

# WILLIAM POWHIDA

## POSSIBILITIES FOR REPRESENTATION

### NEAR FUTURE

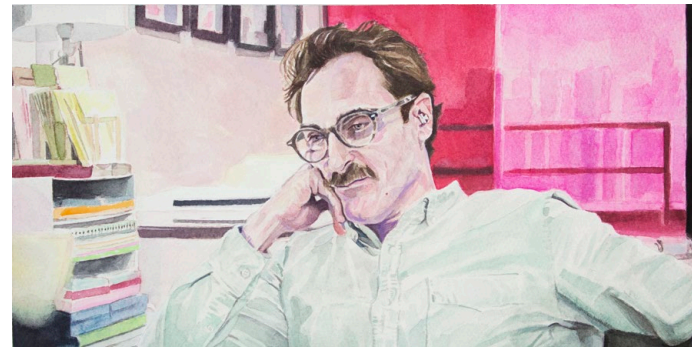


Children of Men  
(Civil Conflict)  
Watercolor on paper  
mounted on panel  
14 x 11 inches  
2020



Tucker Carlson  
(Racist conservative)  
Watercolor on paper  
mounted on panel  
5 x 7 inches  
2020

Kamala Harris  
(Democratic Vice  
President)  
Watercolor on paper  
mounted on panel  
5 x 7 inches  
2021



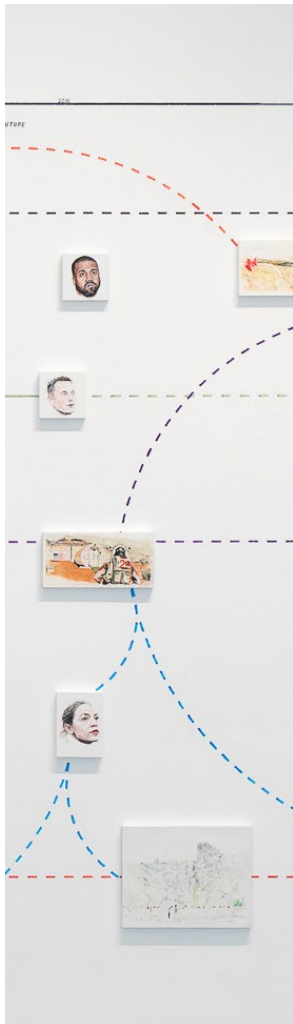
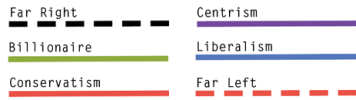
Her (Artificial  
Intelligence)  
Watercolor and  
gouache on paper  
mounted on panel  
12 x 6 inches  
2021



The Black Panther  
(Corporate Utopian Imaginary)  
Watercolor on paper  
mounted on panel  
12 x 6 inches  
2021

# WILLIAM POWHIDA POSSIBILITIES FOR REPRESENTATION

## NEAR FUTURE



Elon Musk  
(Billionaire, disruptor)  
Watercolor on paper  
mounted on panel  
5 x 5 inches  
2021

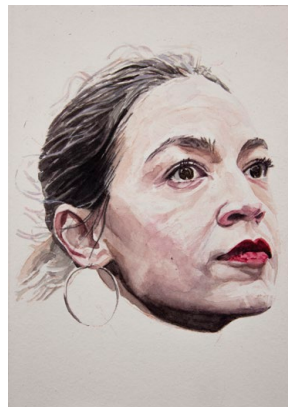


Kanye West (Celebrity  
Third-Party Candidate)  
Watercolor on paper  
mounted on panel  
5 x 5 inches  
2020



The Martian  
(Science)  
Watercolor on paper  
mounted on panel  
12 x 6 inches  
2021

Alexandria Ocasio-Cortez  
(Democratic Socialist)  
Watercolor and gouache on  
paper mounted on panel  
5 x 7 inches  
2021

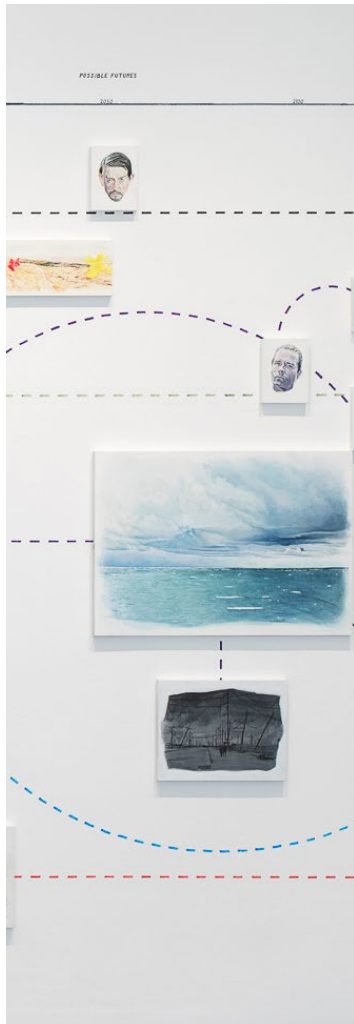
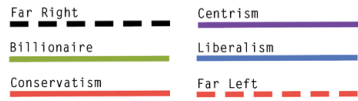


Midsommar (Collectivism)  
Watercolor on paper  
mounted on panel  
14 x 11 inches  
2020

# WILLIAM POWHIDA

## POSSIBILITIES FOR REPRESENTATION

### POSSIBLE FUTURES



Mad Max: Fury Road  
 (Carbon Exhaustion  
 apocalypse)  
 Watercolor on paper  
 mounted on panel  
 12 x 6 inches  
 2021



John Hurt as Chancellor  
 Sutler (Fascism)  
 Watercolor and *V* for  
*Vendetta* on paper  
 mounted on panel  
 5 x 7 inches  
 2021



Antarctic (Climate Collapse)  
 Watercolor on paper mounted on panel  
 28 x 20 inches  
 2020

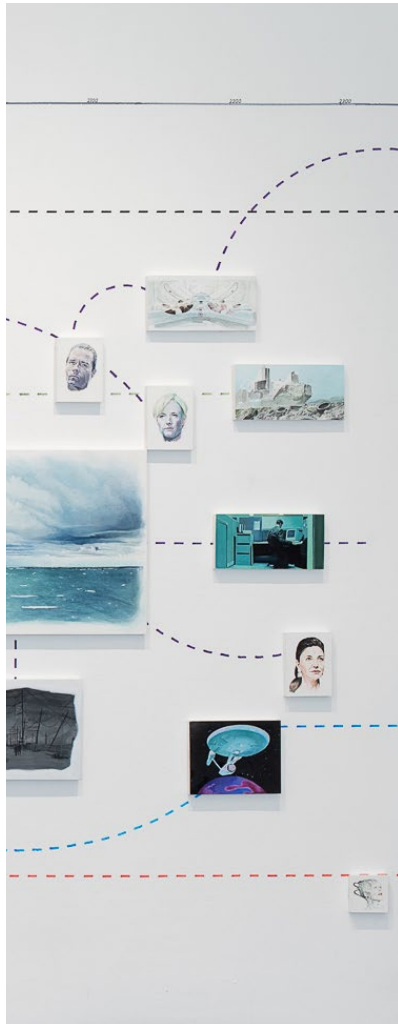
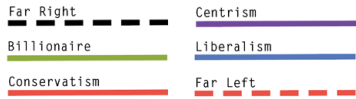


The Road (Climate Catastrophe)  
 Watercolor on paper mounted on panel  
 14 x 11 inches  
 2020

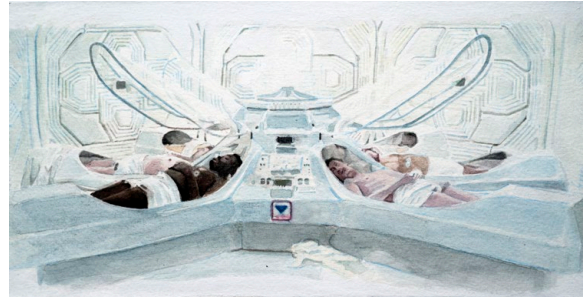
# WILLIAM POWHIDA

## POSSIBILITIES FOR REPRESENTATION

### POSSIBLE FUTURES



Alien  
(Capitalism in Space)  
Watercolor on paper  
mounted on panel  
12 x 6 inches  
2021



Guy Pierce as  
Peter Weyland  
(Capitalist)  
Watercolor and  
*Prometheus* on paper  
mounted on panel  
5 x 7 inches  
2021

Jodie Foster as Def  
Secretary Delacourt  
(Oligarchy in space)  
Watercolor and *Elysium*  
on paper mounted on panel  
5 x 7 inches  
2021



Elysium  
(Oligarchy in Space)  
Watercolor and gouache  
on paper mounted on  
panel  
12 x 6 inches  
2021



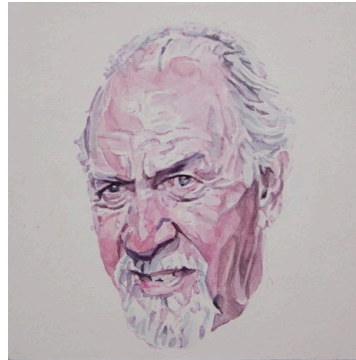
The Matrix (Simulation)  
Watercolor on paper  
mounted on panel  
12 x 6 inches  
2021

# WILLIAM POWHIDA

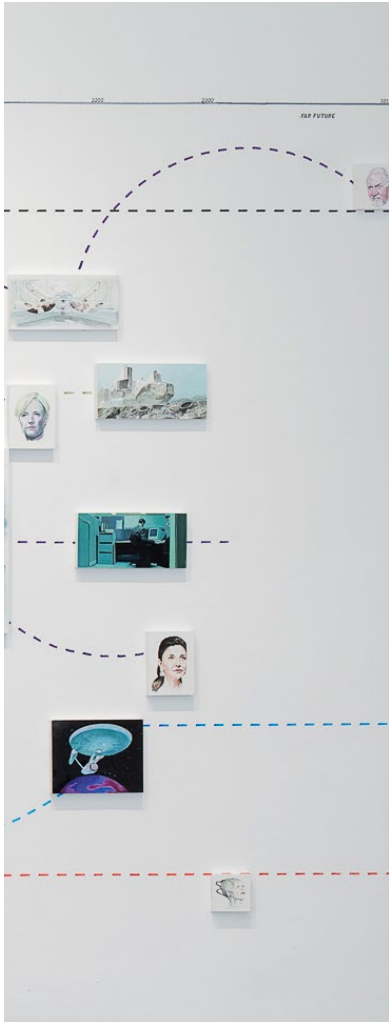
## POSSIBILITIES FOR REPRESENTATION

### POSSIBLE FUTURES

Far Right  Centrism   
 Billionaire  Liberalism   
 Conservatism  Far Left



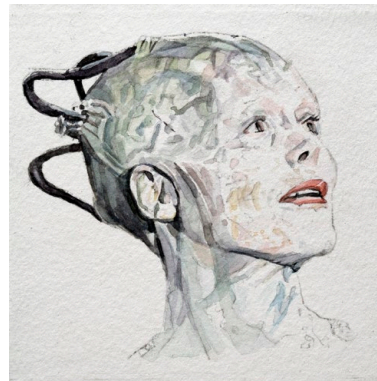
Jose Ferrer as Emperor  
 Shaddam Corrino IV  
 (Neofeudalism in space)  
 Watercolor and *Dune (1986)* on  
 paper mounted on panel  
 5 x 5 inches  
 2021



Shohreh Aghdashloo as UN  
 Sec Gen Avasarala  
 (Democracy in space)  
 Watercolor and  
*The Expanse* on paper  
 mounted on panel  
 5 x 7 inches  
 2021

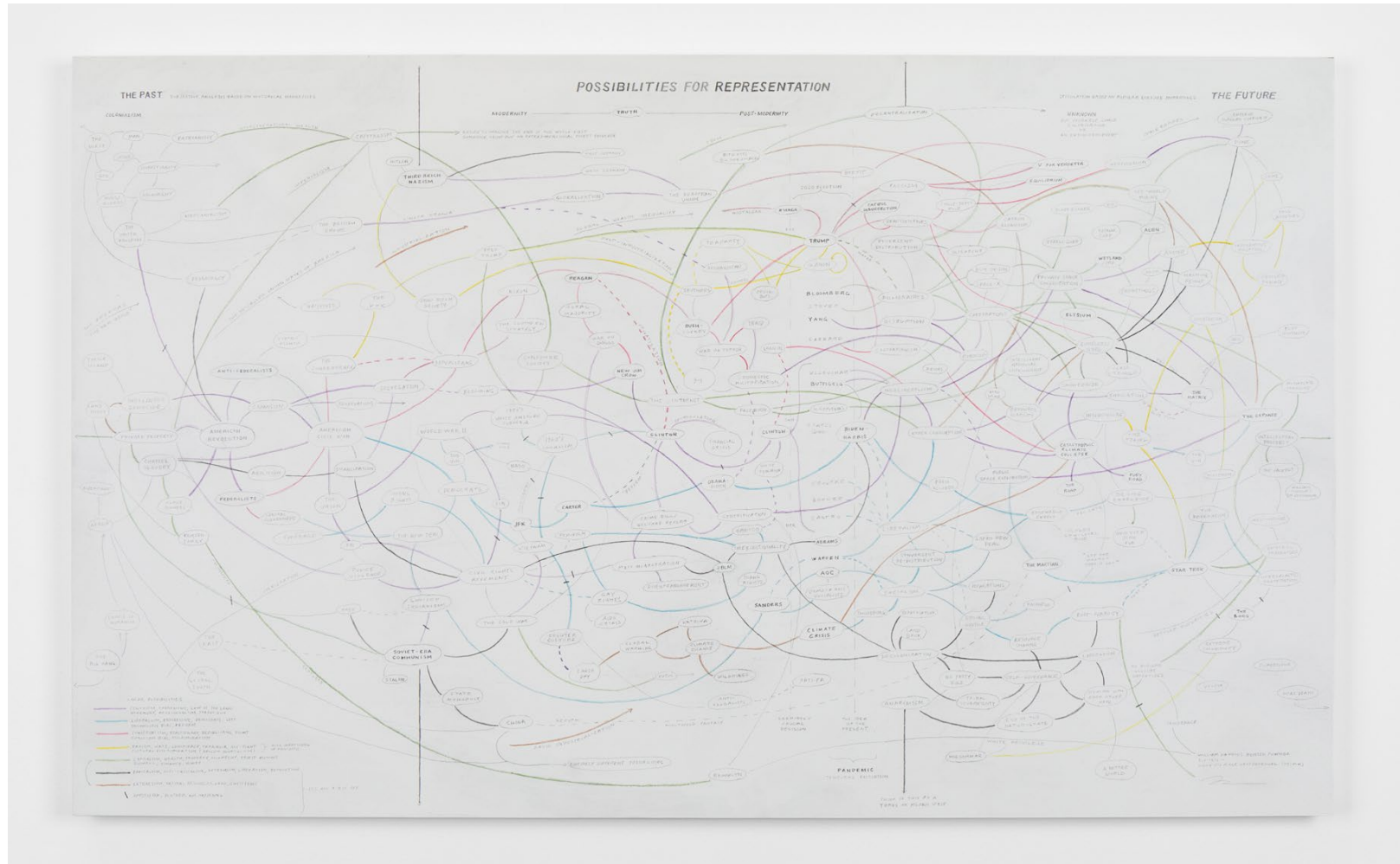


Star Trek  
 (post scarcity, liberal  
 utopia in space)  
 Watercolor on paper  
 mounted on panel  
 8 x 10 inches  
 2021



Alice Krige as the Borg Queen  
 (Extreme Collectivity in space)  
 Watercolor and *Star Trek:TNG* on  
 paper mounted on panel  
 4 x 4 inches  
 2021

# WILLIAM POWHIDA POSSIBILITIES FOR REPRESENTATION



Composite Study (Possibilities for Representation)  
Graphite and watercolor on panel  
60 x 36 inches  
2019-2021

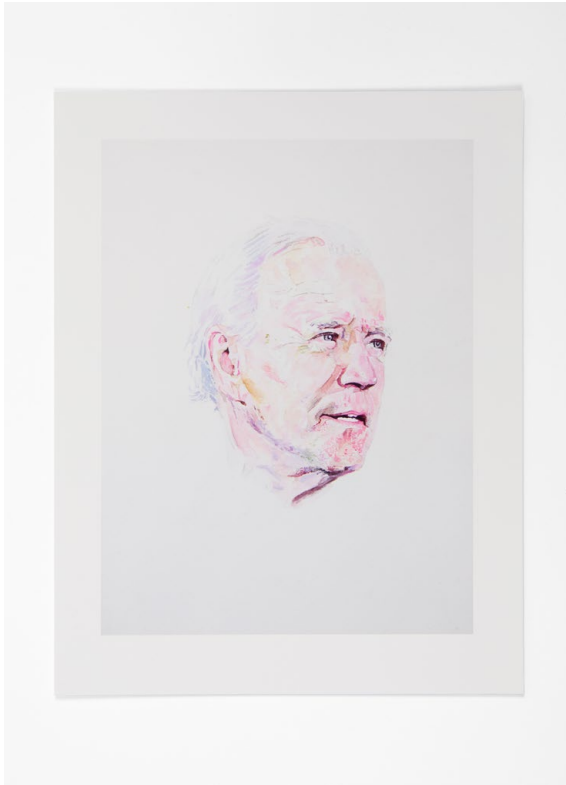
# WILLIAM POWHIDA POSSIBILITIES FOR REPRESENTATION

## POSSIBILITIES FOR REPRESENTATION - THE REFERENDUM EDITION

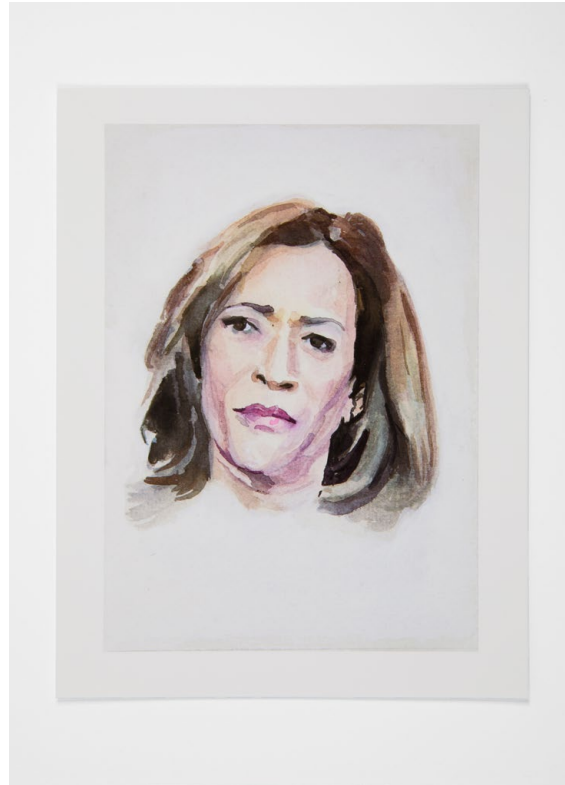
In the rear gallery Powhida has presented an interactive installation of thirteen archival pigment prints, each one a Powhida rendering of historical and contemporary political leaders that we invite show-goers to “vote” on - with their money. Edition sizes per piece will be declared at the conclusion of the show as a function of how many pieces are sold from each edition. Proud Biden voter? Buy a bunch, give them to friends. Still think Bernie would have won? Festoon the office with his image. Yearn for a return to the days of JFK, Jimmy Carter, or Bill Clinton? The referendum will register your loyalty as a function of your spending. We even present a slew of progressive candidates who may in the future run for President - pick your horse now!



WILLIAM POWHIDA  
POSSIBILITIES FOR REPRESENTATION



Joe Biden (Democrat)  
Archival pigment print  
8.5 x 11 inches  
Open Edition  
2021



Kamala Harris (Democrat)  
Archival pigment print  
8.5 x 11 inches  
Open Edition  
2021



Stacey Abrams (Democrat,  
political activist)  
Archival pigment print  
8.5 x 11 inches  
Open Edition  
2021

WILLIAM POWHIDA  
POSSIBILITIES FOR REPRESENTATION



(Alexandria Ocasio-Cortez  
(Democratic Socialist)  
Archival pigment print  
8.5 x 11 inches  
Open Edition  
2021



Elizabeth Warren (Democrat)  
Archival pigment print  
8.5 x 11 inches  
Open Edition  
2021

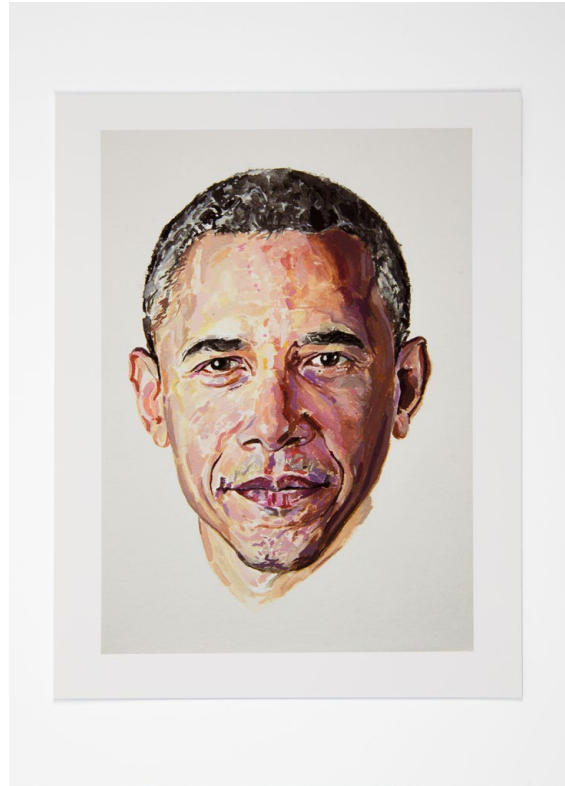


Bernie Sanders  
(Democratic Socialist)  
Archival pigment print  
8.5 x 11 inches  
Open Edition  
2021

WILLIAM POWHIDA  
POSSIBILITIES FOR REPRESENTATION



Trump (Former US  
president, loser)  
Archival pigment print  
8.5 x 11 inches  
Open Edition  
2021



Barack Obama (Democrat)  
Archival pigment print  
8.5 x 11 inches  
Open Edition  
2021



Hillary Clinton  
(Democrat)  
Archival pigment print  
8.5 x 11 inches  
Open Edition  
2021

WILLIAM POWHIDA  
POSSIBILITIES FOR REPRESENTATION



Andrew Yang (Democrat,  
Disruptor)  
Archival pigment print  
8.5 x 11 inches  
Open Edition  
2021



Jimmy Carter (Democrat)  
Archival pigment print  
8.5 x 11 inches  
Open Edition  
2021



Bill Clinton (Democrat)  
Archival pigment print  
8.5 x 11 inches  
Open Edition  
2021



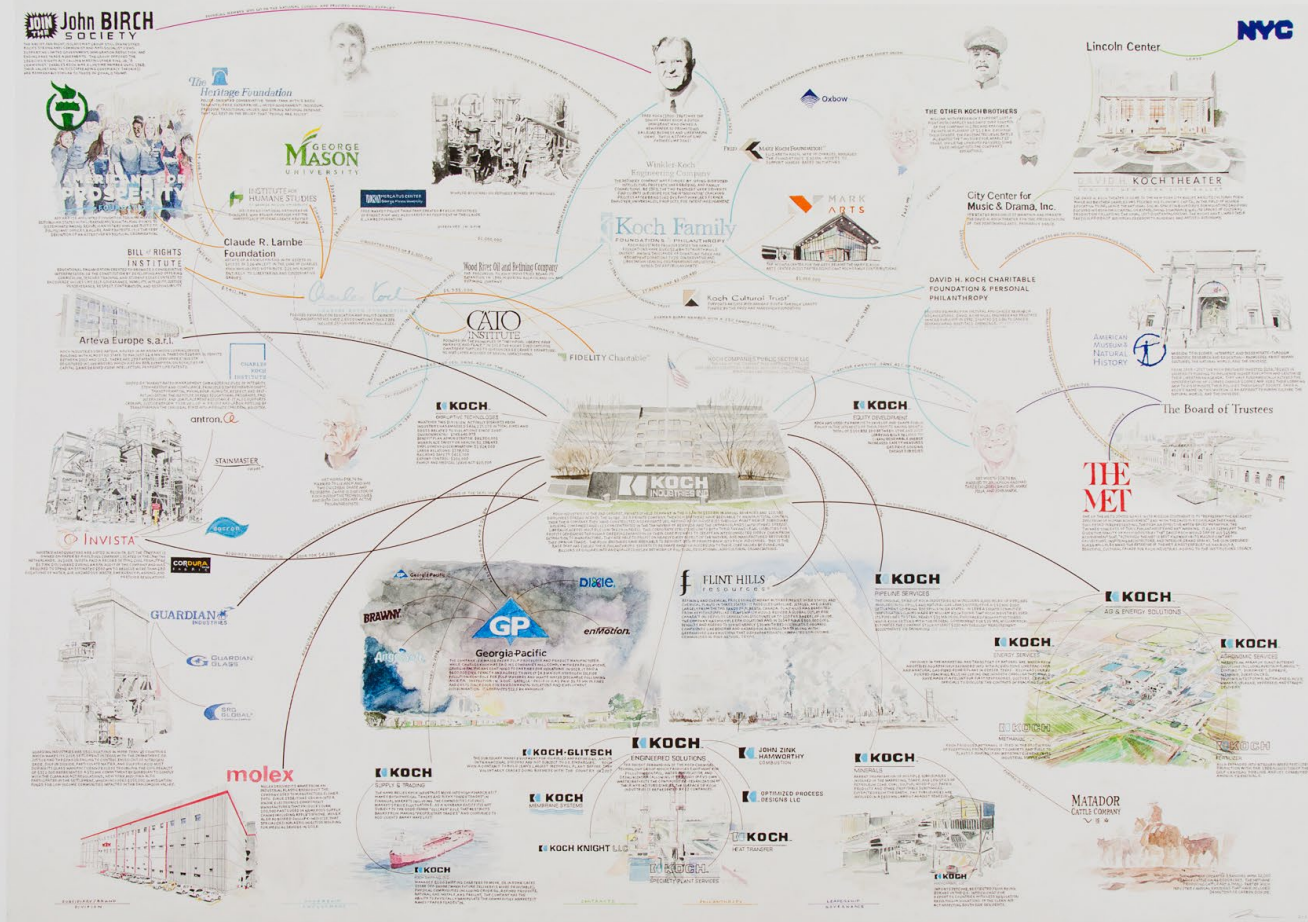
John F. Kennedy  
(Democrat)  
Archival pigment print  
8.5 x 11 inches  
Open Edition  
2021

# WILLIAM POWHIDA POSSIBILITIES FOR REPRESENTATION

## THE FAMILY TREES

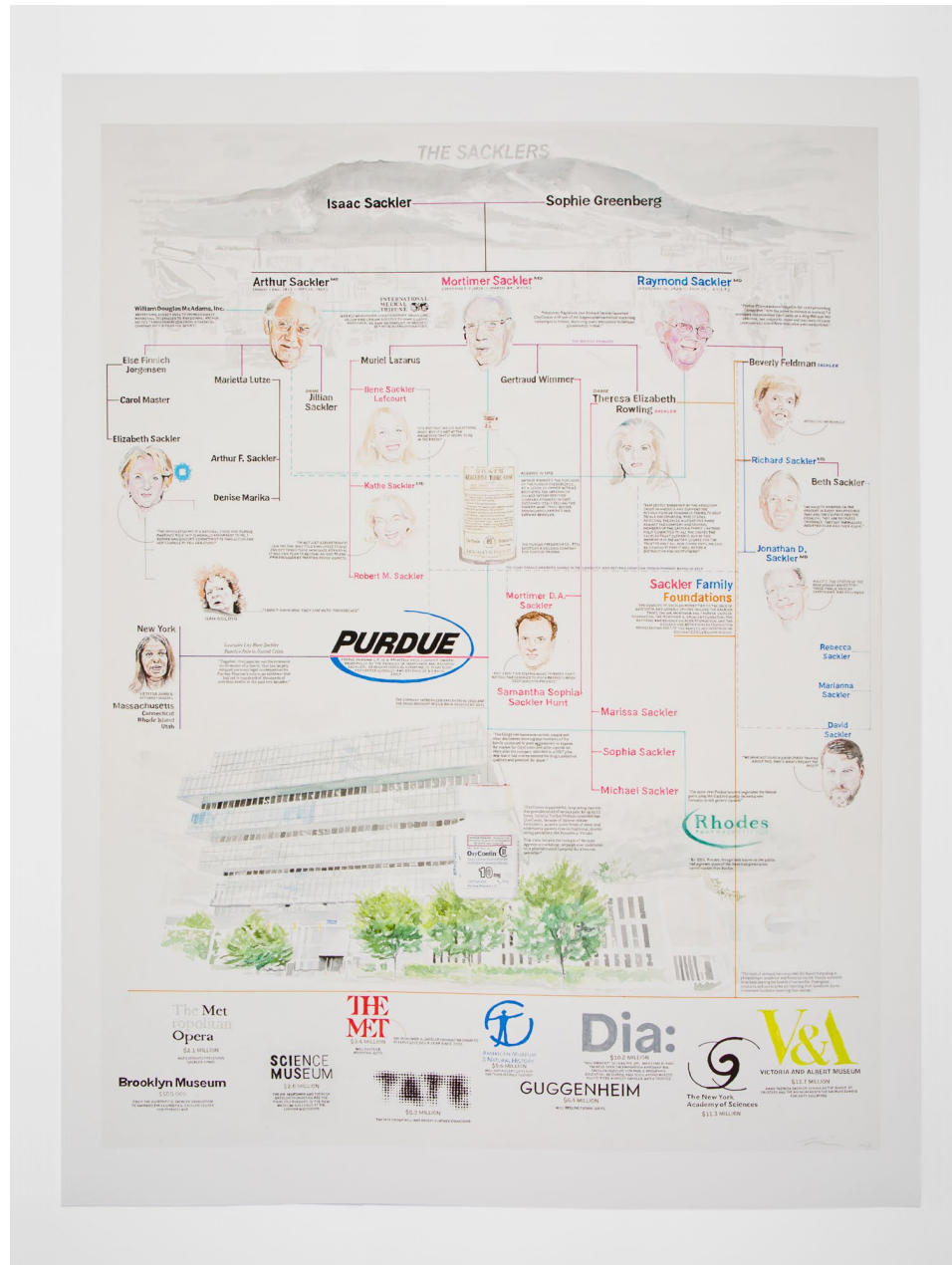
Also included in the exhibition are reproductions of two of Powhida's previous works from his 2019 exhibition, *Complicities*, at Postmasters Gallery in NY. The two prints, *Koch Industries and the Sackler Family Tree*, are representative of a less subjective, more rigorous approach to reporting on the connections between capital and culture. The exhaustive research and detail of these works provide another way of thinking about the role art can play in society, while the larger installation takes a step back to examine the dichotomies, parallels, and roles individuals play in the cultural narratives that shape our underst

# WILLIAM POWHIDA POSSIBILITIES FOR REPRESENTATION



Koch Industries  
(Private Company)  
Archival pigment print  
48 x 36 inches  
Edition of 3  
2021

# WILLIAM POWHIDA POSSIBILITIES FOR REPRESENTATION



The Sacklers  
 (Family Tree)  
 Archival pigment print  
 36 x 48 inches  
 Edition of 3  
 2021

# WILLIAM POWHIDA

## POSSIBILITIES FOR REPRESENTATION

**William Powhida** (b. 1976 NY) earned his BFA from Syracuse University and his MFA from Hunter College, NY. He has exhibited nationally and internationally in New York, Los Angeles, Seattle, London, Madrid, Miami, Chicago, Copenhagen, Mexico City, Dublin and other locales. His work has been discussed in a wide range of publication including The New York Times, Artforum, Art in America, The Brooklyn Rail, Art News, Art Info, Artnet, Hyperallergic, and others. Residencies include The Lower East Side Printshop, the John Michael Kohler Art Center, the Headlands Center for the Arts, and Casa Maauad in Mexico City. Powhida's work resides in the permanent collections of the Whitney Museum of American Art, the Henry Art Gallery Seattle, the Museum of Contemporary Art San Diego, the Orange County Museum, the Crocker Art Museum, the 21c Museum, and the JP Morgan & Chase Collection, among others. He is represented in NY by Postmasters Gallery and in Los Angeles by Charlie James Gallery. He lives and works in Brooklyn, NY.